



# turners



## Hillsborough Terrace

Ilfracombe, EX34 9NR

**Price Guide £120,000**



Well-presented top floor one-bedroom flat in a period building offering sea views, ideal for first-time buyers or investors seeking a coastal property.



## The property

Positioned within an impressive period building and enjoying breathtaking sea views, this well-presented top floor flat offers a fantastic opportunity for first-time buyers and investors alike.

The property boasts a bright and spacious open-plan lounge, kitchen and dining area, creating a modern and versatile living space ideal for both relaxing and entertaining. A generously sized double bedroom provides comfortable accommodation, while the contemporary three-piece shower room suite is finished to a high standard.

Further benefits include useful additional storage and access to a convenient communal laundry room, adding to the practicality of the home. With its desirable coastal outlook, characterful setting and well-designed interior, this attractive flat combines charm, comfort and convenience in one exceptional package.

## Location

Ilfracombe town offers a variety of independent shops, art galleries, restaurants and bars. The picturesque seafront and harbour area is home to artist Damien Hirst's 'Verity' statue at the harbour entrance. In addition is the exciting new water sports centre and café making the harbour a hive of activity.

North Devon has a wealth of simply stunning golden sand beaches and has long been a mecca for British surfers. The area has recently been declared a 'world surfing reserve', one of just 12 places on the planet along with Australia's Golden Coast and Malibu in California.

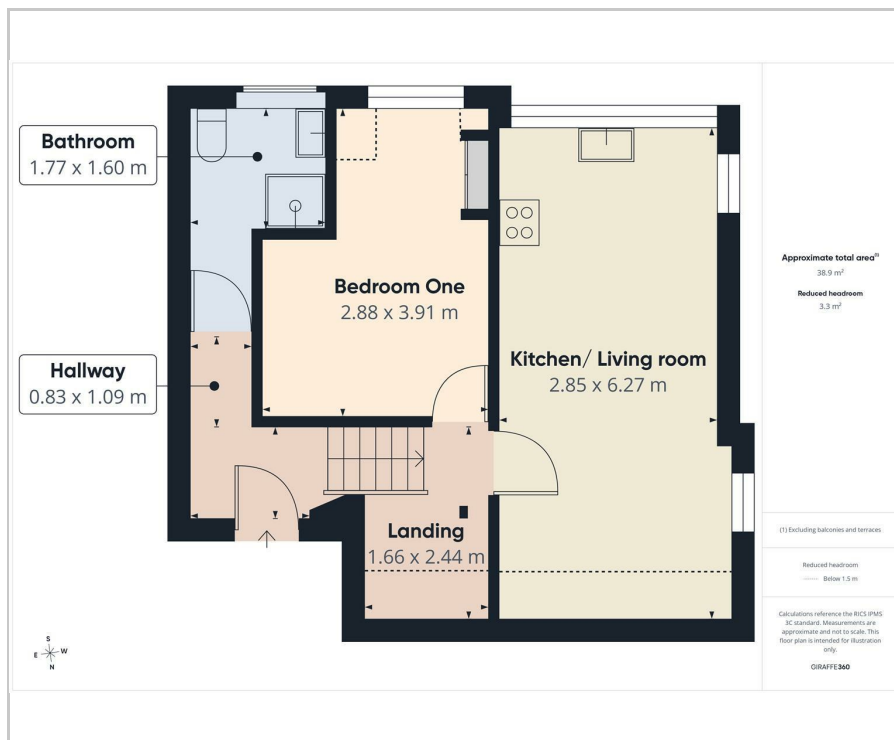
## Agent notes

- 999 year lease
- Communal laundry room
- £80pcm service charge
- Current rental £575.00pcm

## Directions

From our office, head north-east on the high street/A361 towards oxford grove. follow the road onto Portland street and in approximately 0.2 miles, turn right onto Hillsborough Terrace where an agent will meet you outside.

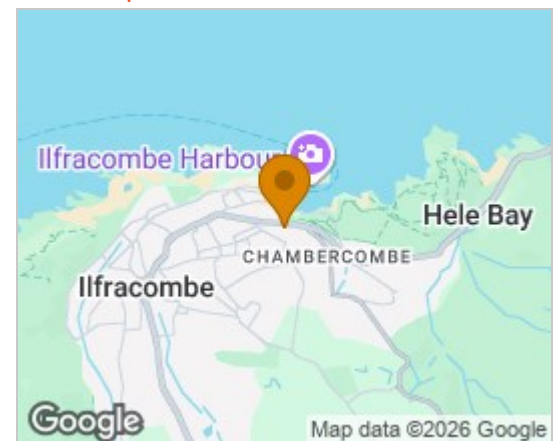
## Floor Plans



These particulars, whilst believed to be accurate are set out as a general outline only for guidance and do not constitute any part of an offer or contract. Intending purchasers should not rely on them as statements of representation of fact, but must satisfy themselves by inspection or otherwise as to their accuracy. No person in this firm's employment has the authority to make or give any representation or warranty in respect of the property.

135 High Street, Ilfracombe, Devon, EX34 9EZ  
Tel: 01271 866421  
Email: sales@turnerspropertycentre.co.uk  
<https://www.turnerspropertycentre.co.uk>

## Area Map



## Energy Efficiency Graph

