



Evelyn Crescent, TW16

£495,000

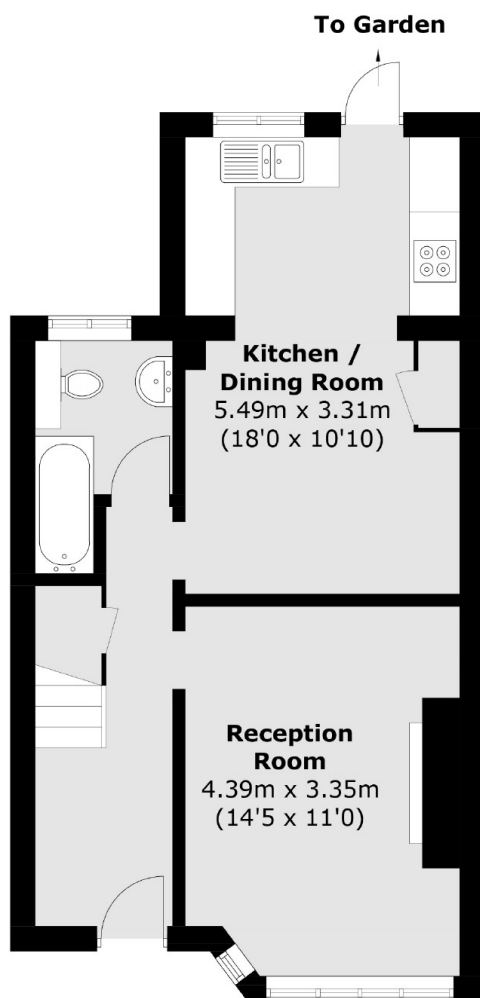
A smartly presented, three bedroom mid terrace house with a modern kitchen, beautifully landscaped rear garden and the added bonus of off street parking. You will just need to unpack to start enjoying your new home.

Evelyn Crescent is located off Nursery Road and close to local schools. Both Upper Halliford and Sunbury stations, which provide a direct service to London Waterloo are both under half a mile away.

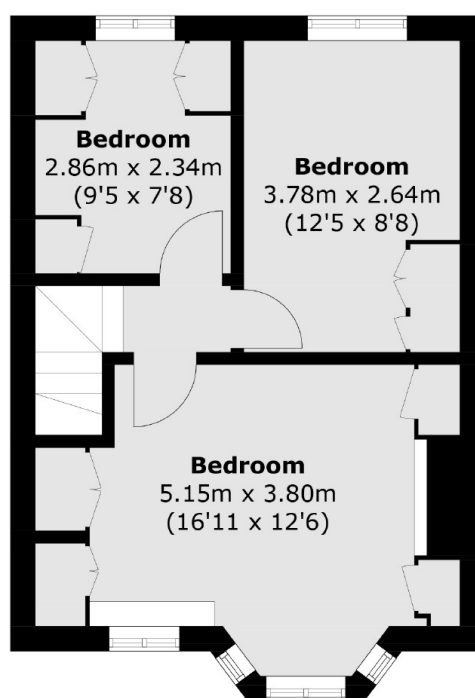
Features

- Mid Terrace
- Smartly Presented
- Three Bedrooms
- Extended Ground Floor
- Landscaped Rear Garden
- Off Street Parking

Evelyn Crescent, Sunbury-On-Thames, TW16



Ground Floor



First Floor

Total area (approx.): 82.7 sq. m (890.2 sq. ft)