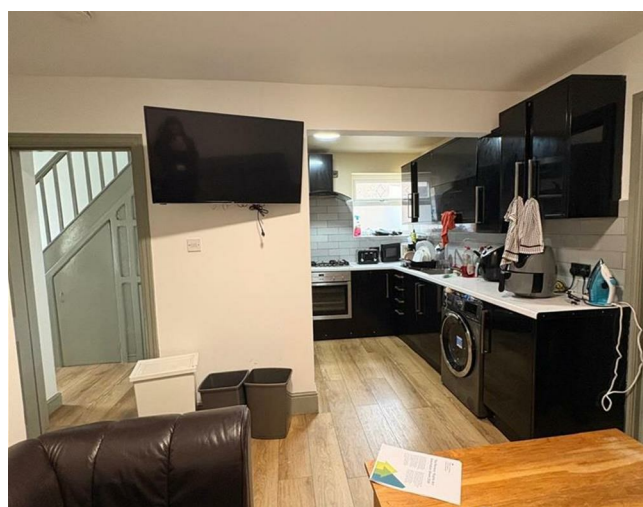


## 17 Sulby Drive, Greaves, Lancaster, LA1 4UB



**£125 Per Week**



Head Office: 83 Bowerham Road Lancaster LA1 4AQ  
T 01524 548888 E [enquiries@mightyhouse.co.uk](mailto:enquiries@mightyhouse.co.uk) W [www.mightyhouse.co.uk](http://www.mightyhouse.co.uk)



Mighty House is a trading name of P&PC Surveyors Limited. Registered Office: 70 Daisy Hill, Dewsbury, WF13 1LS. Company no: 06498054

Newly refurbished 4 bed 4 bathroom property available 26/27!!

£125 per person per week with all bills included!

This spacious property is on the way to the University as well as the town centre and benefits from off street parking.

The kitchen has been recently renovated to a high standard. The bedrooms are spacious & fully furnished making this property perfect for students.

Don't miss out and book your viewing today!!

**Ground Floor**

**Entrance Hall**

With spindled staircase leading off, gas boiler, polished wooden flooring, Upvc double glazed front entrance door and windows, radiator.

**Lounge**

3.669m x 3.593m (12'0" x 11'9") Overall measurement into Upvc double glazed front bay window and recesses, attractive fireplace with inset gas fire, , polished wooden flooring, radiator, opening to:

**Dining Room**

3.846m x 3.106m (12'7" x 10'2") Polished wooden flooring, radiator, opening to:

**'L' shaped Dining Kitchen**

5.186m x 2.042m plus deep recess 3.029m x 2.077m (17'0" x 6'8" plus deep recess 9'11" x 6'9") Extended kitchen, stainless steel sink unit, good range of fitted wall and floor units including pull out larder unit and corner carousel unit, gas hob, built under oven, extractor hood, integrated dishwasher,

integrated washing machine, kickerboard lighting, polished wooden flooring, Upvc double glazed rear window and french doors leading to the rear garden.

**First Floor**

**Galleried Landing**

Built in store cupboard, Upvc double glazed side window.

**Bedroom 1**

3.853m x 3.162m (12'7" x 10'4") Overall measurement including good range of fitted wardrobes, top storage and drawers, Upvc double glazed rear window, radiator.

**Bedroom 2**

3.262m x 3.144m (10'8" x 10'3") Overall measurement including good range of fitted wardrobes, top storage and drawers, Upvc double glazed front window, radiator.

**Bedroom 3**

2.164m x 2.134m (7'1" x 7'0") Upvc double glazed front window, radiator.

**Bathroom/w.c.**

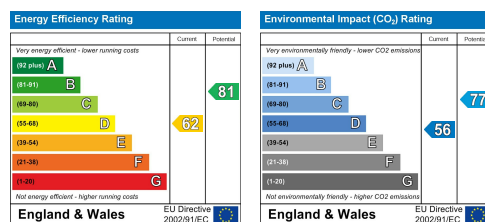
2.070m x 2.061m (6'9" x 6'9") Bath with shower over, wash basin, toilet, fully tiled walls, tiled flooring, panelled ceiling with inset lighting, Upvc double glazed rear window, towel radiator.

**Exterior**

Off road car parking to the front. Enclosed rear garden enjoying a sunny aspect with paviors to the side and rear. Garden shed.

**Useful Information**

Council Tax Band - B





Head Office: 83 Bowerham Road Lancaster LA1 4AQ  
T 01524 548888 E [enquiries@mightyhouse.co.uk](mailto:enquiries@mightyhouse.co.uk) W [www.mightyhouse.co.uk](http://www.mightyhouse.co.uk)



Mighty House is a trading name of P&PC Surveyors Limited. Registered Office: 70 Daisy Hill, Dewsbury, WF13 1LS. Company no: 06498054