



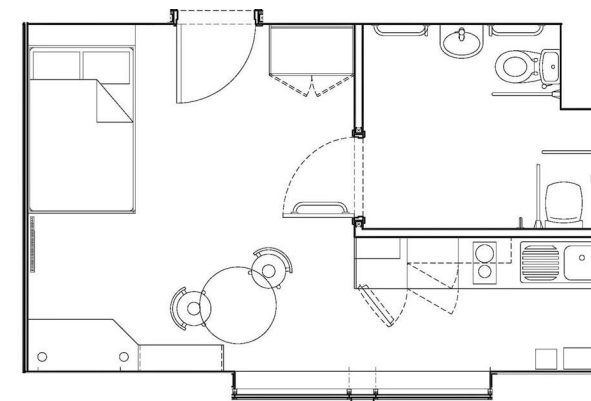
Great Crosshall Street | | Liverpool | L3 2AT

£215 Per week



Great Crosshall Street |
 Liverpool | L3 2AT
 £215 Per week

LIVERPOOL | STUDENT | SEPTEMBER



- Social and study spaces
- Bike storage
- High speed Wi-Fi
- Utilities including water and heating
- Strong community
- 24-hour gym
- Onsite laundry facilities
- Contents insurance
- Excellent location
- Student only

Energy Efficiency Rating		
	Current	Potential
<i>Very energy efficient - lower running costs</i>		
(92 plus) A		
(81-91) B		
(69-80) C		
(55-68) D		
(39-54) E		
(21-38) F		
(1-20) G		
<i>Not energy efficient - higher running costs</i>		
England & Wales	EU Directive 2002/91/EC	

Lower Ground Floor
 27 Ridley Place
 Newcastle upon Tyne
 Tyne and Wear
 NE1 8JN
 0191 6403450
 info@propertybynest.co.uk