



Avenue Elmers, KT6

£575,000

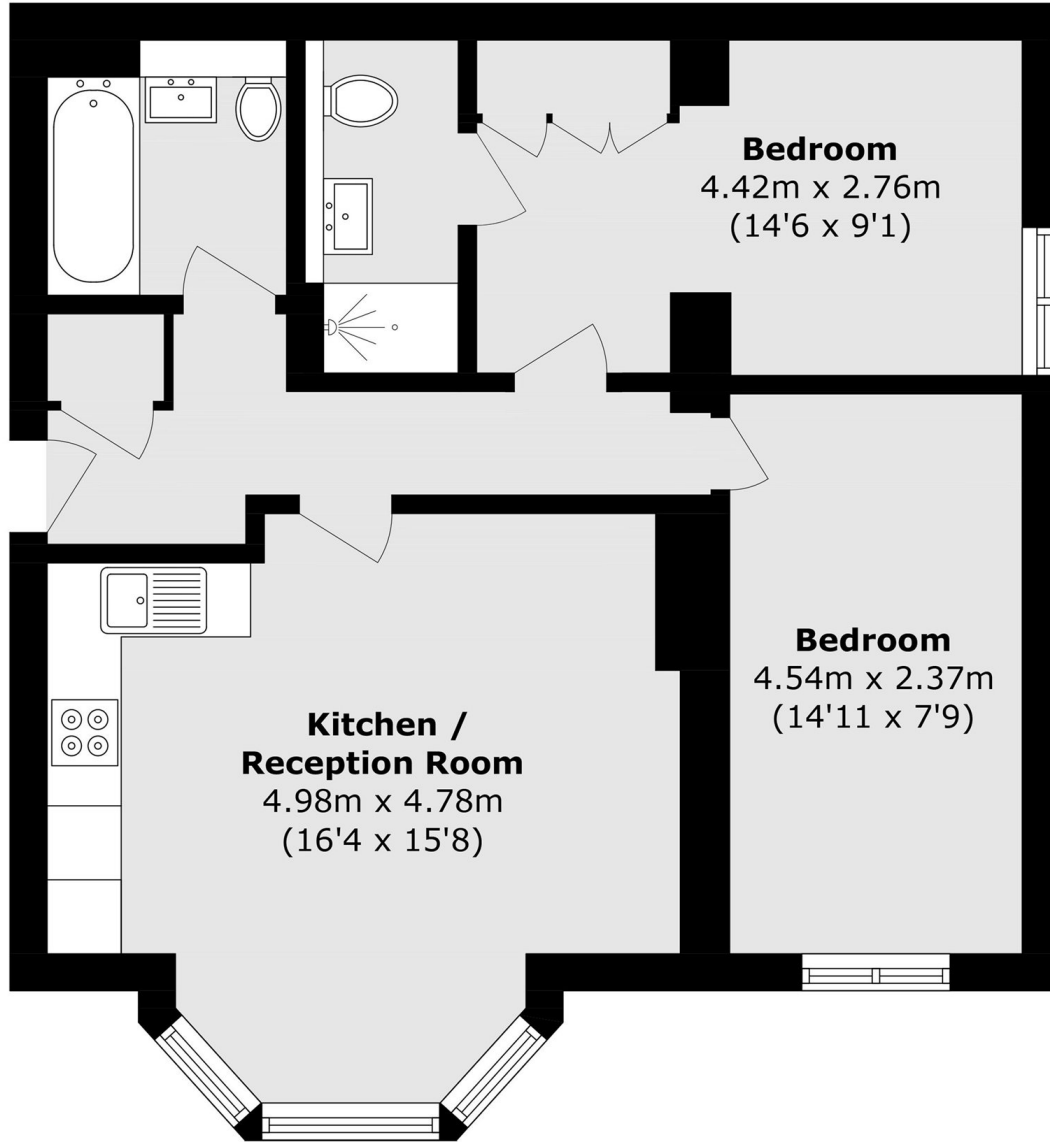
A well-presented flat set within an elegant, double-fronted period property, featuring a charming bay-fronted aspect. The accommodation offers two bedrooms and two bathrooms, along with the added advantage of allocated parking. The property is also available with no onward chain.

Avenue Elmers is approximately half a mile away from everything you need, including the River Thames, the desirable Maple Road, Surbiton high street and the mainline train station.

Features

- Period Conversion
- Two Bedrooms
- Two Bathrooms
- No Onward Chain
- Allocated Parking
- Central Location

Avenue Elmers, Surbiton, KT6



Total area (approx.): 61.2 sq. m (658.7 sq. ft)