



## Brockley Road, SE4

£2,200 Per calendar month

A collection of one, two and three bedroom apartments in this development above an old converted bank. This particular flat comprises an open plan kitchen/reception, two double bedrooms and a modern bathroom with walk-in shower.

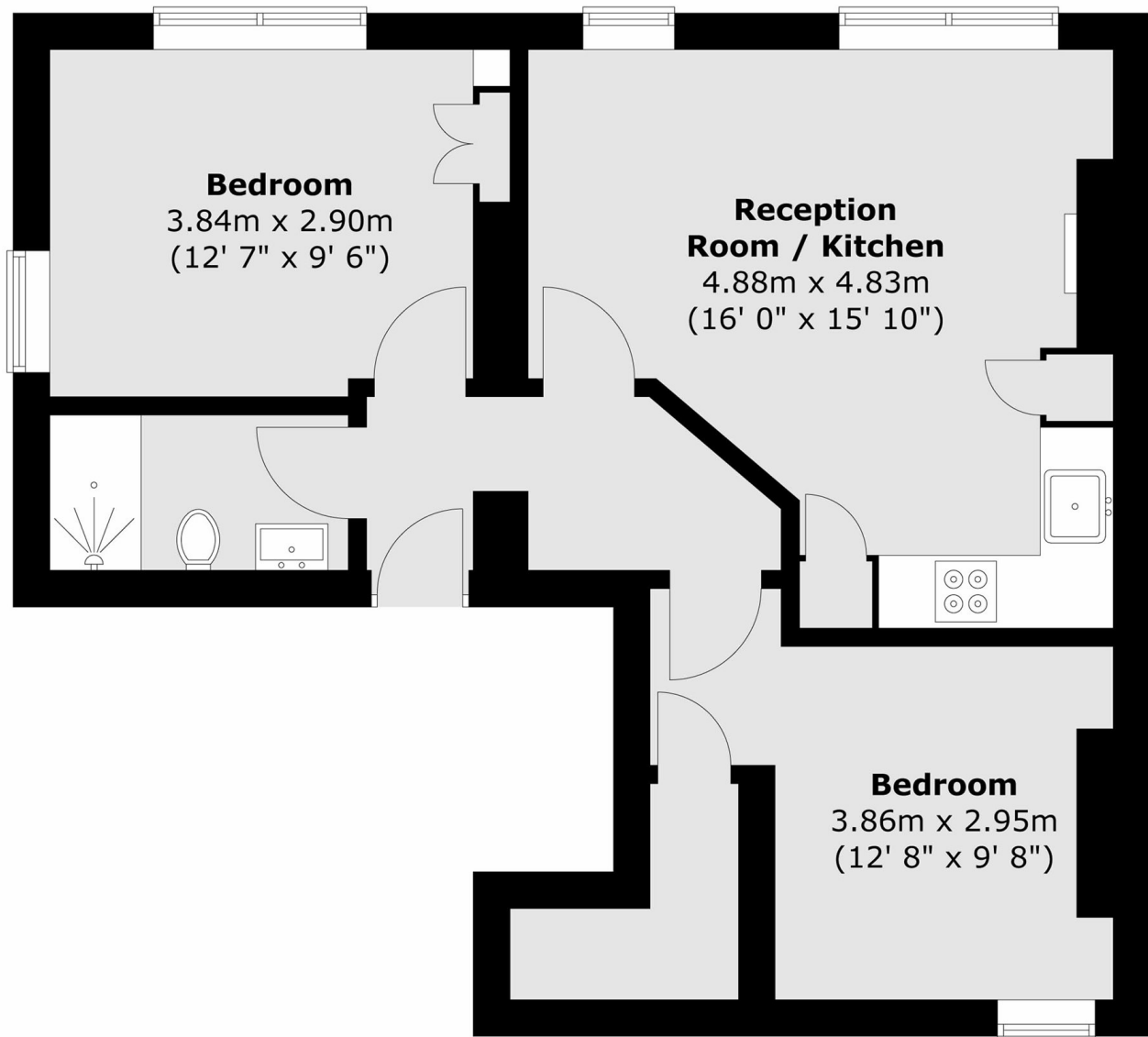
Conveniently located for Crofton Park, Brockley and Ladywell train stations and the open spaces of Blythe Hill, Hilly Fields and Brockwell. The great independent cafés and shops of Crofton Park are located on your door step.

### Features

Brand New Development  
First Floor Flat  
Large Open Plan Kitchen/  
Reception  
Two Double Bedrooms  
Modern Bathroom

Brockley Road,  
London, SE4

### First Floor



Total area (approx.) : 53.4 sq. m (575 sq. ft)