

OVER 60?

Secure this property
for up to **59% less!**



Price

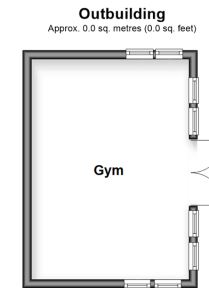
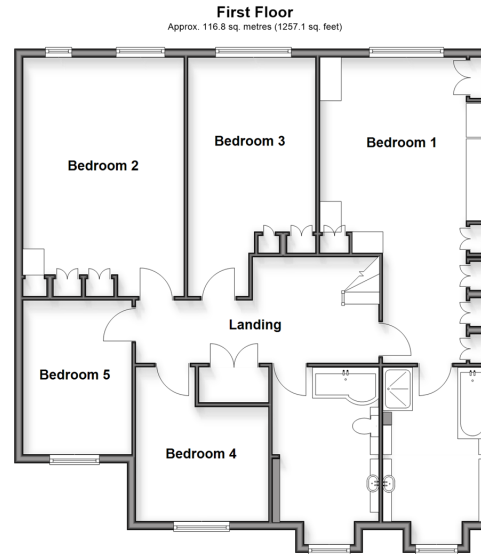
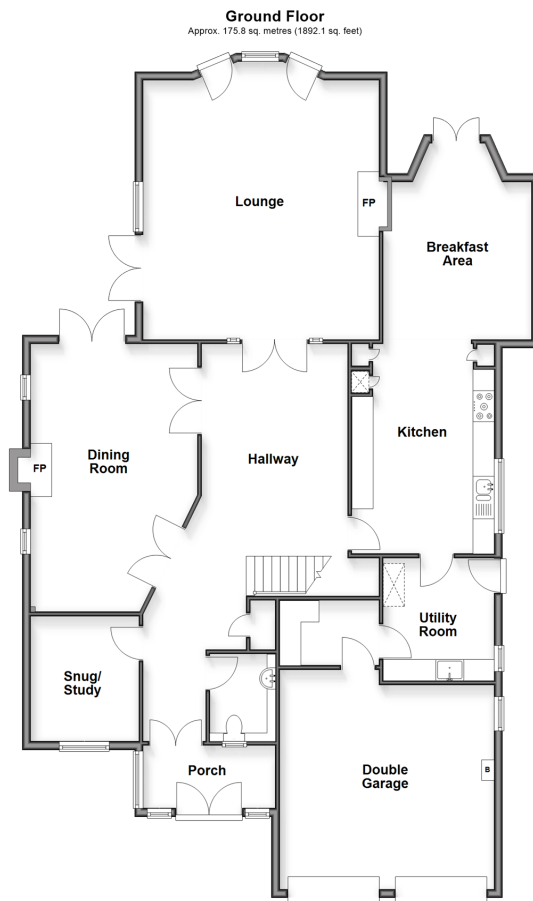
£1,250,000

Freehold

5x  2x  3x 

The Street, Hartlip, Sittingbourne, Kent,
ME9

Wards
Helping you move forwards



Accommodation

GROUND FLOOR

Porch
Hallway: 22'9 x 11'7 (6.94m x 3.53m)
Downstairs Cloakroom
Snug/Study : 9'1 x 8'6 (2.77m x 2.59m)
Dining Room : 19'6 x 13'1 (5.95m x 3.99m)
Lounge : 19'9 x 17'9 (6.02m x 5.41m)
Kitchen : 15'2 x 11'1 (4.63m x 3.38m)
Breakfast Area: 14'1 x 12'1 (4.30m x 3.69m)
Utility Room : 9'6 x 8'5 (2.90m x 2.57m)
Laundry/Boot Room : 8'2 x 5'0 (2.49m x 1.53m)

FIRST FLOOR

Landing
Bedroom 1 : 22'8 x 13'3 (6.91m x 4.04m)
Full En-Suite Bathroom : 12'1 x 8'2 (3.69m x 2.49m)
Bedroom 2 : 15'3 x 13'0 (4.65m x 3.97m)
Bedroom 3 : 17'0 x 9'8 (5.19m x 2.95m)
Bedroom 4 : 11'9 x 9'0 (3.58m x 2.75m)
Bedroom 5 : 9'6 x 9'4 (2.90m x 2.85m)
Bathroom : 12'0 x 8'9 (3.66m x 2.67m)

OUTBUILDING

Gym: 17'5 x 12'3 (5.31m x 3.74m)

OUTSIDE

Front Garden
Rear Garden
Double Garage : 17'4 x 17'0 (5.29m x 5.19m)
Driveway



Main features

- An attractive and beautifully presented family home
- Generous 19ft lounge with feature window overlooking the garden
- Oak kitchen and linked breakfast area
- Generous 22ft main bedroom with stylish full en-suite bathroom
- Vast established private rear garden
- Highly desirable Hartlip location



Nearest Schools

Primary Schools: Hartlip Endowed C of E Primary, Deanwood Primary Education Technology School, Holywell Primary
Secondary Schools: Leigh Academy Rainham, The Howard School, Rainham School for Girls



Transport Information

Train Stations: Newington 1.9 miles, Rainham 2.8 miles, Sittingbourne 5.0 miles



Address

The Street, Hartlip, Sittingbourne, Kent, ME9



Directions

For directions to this property please contact us.



Wards
Helping you move forwards

Call Rainham Branch 01634 373531 ■ wardsofkent.co.uk



■ Legal advice should be taken to verify fixtures/fittings, planning, alterations and/or lease details ■ Appliances & services are untested, dimensions are approximate and floor plans are not to scale
■ Through a Homewise Home For Life Plan people aged 60+ can secure this property for up to 50% less, by purchasing a Lifetime Lease.



11339147/20251106/CW/DW