

This 42' x 20' well presented Modern Park Home has an ensuite facility, two reception rooms, fitted kitchen and benefits from Wickham Courts' leisure facilities including pools, club house and sauna.

The Accommodation Comprises:-

Front door into:

Entrance Hall:-

Storage cupboard, radiator, access to boarded loft with ladder and light, door into:

Dining Room:- 9' 7" x 8' 4" (2.92m x 2.54m)

Double glazed French doors to side, radiator, double opening doors into:

Lounge:- 19' 3" x 10' 3" (5.86m x 3.12m)

Double glazed windows to side and front elevations, radiators, electric fire.

Kitchen:- 11' 7" x 9' 2" (3.53m x 2.79m)

Double glazed window and door to rear, flat ceiling with spot lighting inset, range of base and eye level units with one and a half bowl sink unit, drink cooler, fridge and freezer, dishwasher, washing machine, double oven and grill, hob with extractor, microwave, Gas Central Heating boiler concealed within wall unit.

Bedroom 1:- 11' 2" x 9' 7" (3.40m x 2.92m) Maximum Measurements

Double glazed window to side elevation, radiator, door into:

Dressing Room:- 10' 4" x 3' 10" (3.15m x 1.17m), L-Shaped

Dressing table, shelves and storage unit, door into:

Ensuite Shower Room:- 6' 2" x 5' 3" (1.88m x 1.60m)

Obscured double glazed window to rear elevation, partially tiled, close coupled WC, shower cubicle, wash hand basin, chrome heated towel rail, light and shaver socket.

Bedroom 2:- 9' 2" x 8' 1" (2.79m x 2.46m)

Double glazed window to side elevation, radiator, built-in bedroom furniture.

Shower Room:- 6' 8" x 6' 2" (2.03m x 1.88m)

Obscured double glazed window to side elevation, partly tiled, chrome heated towel rail, close coupled WC, wash hand-basin, cupboard with shelves and radiator.

Outside:-

Driveway for parking and additional private parking space, patio areas with range of shrubs and flowers, secluded garden area laid to astro-turf and bordered by hedging.

Wickham Court:-

Wickham Court epitomises Park Life Style with excellent recreational facilities to enjoy within its fabulous 11 acre setting, including indoor and outdoor swimming pools, gymnasium, jacuzzi and club house.

Material Information

Council Tax Band: - Winchester City Council. Tax Band A

Tenure: - Residential Licence Maintenance: Approx. £2,616 per annum

Property Type: - Park Home

Electricity Supply: - Mains

Gas Supply: - Regularly replenished Site container

Water Supply: - Mains

Sewerage: - Mains with Site Septic Tank

Heating: - Central Heating

Broadband - Currently supplied by BT. Average available download speed for this Postcode of 1000MB: Potential broadband speeds

- <https://www.openreach.com/fibre-broadband>

Mobile signal: Available - check here for all networks

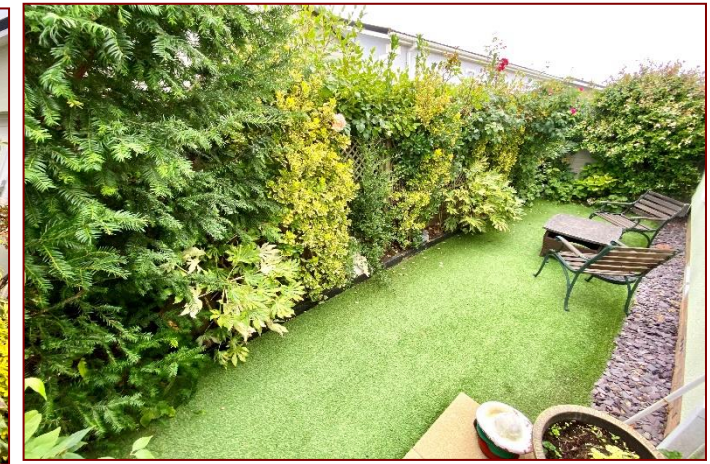
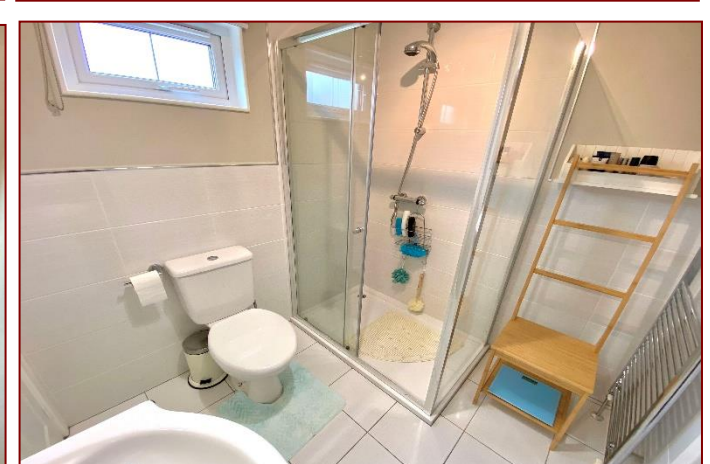
- <https://checker.ofcom.org.uk/>

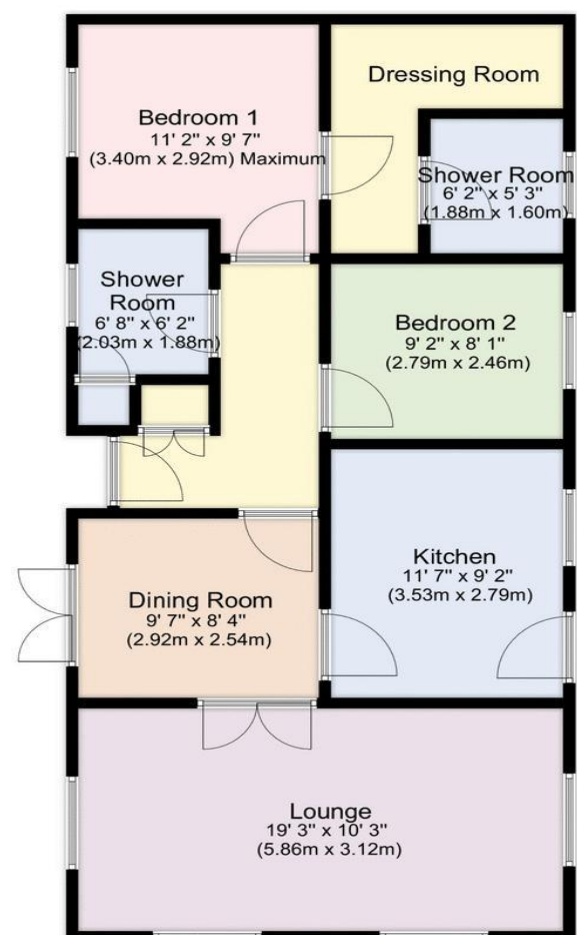
Parking: Driveway

Flood Risk: - Check at the Environment Agency's website

(<http://www.environment-agency.gov.uk/homeandleisure/floods/31656.aspx>)?

Fenwicks Estate Agents has further information as provided by current vendor





Disclaimer: These particulars are set out as a general outline in accordance with the Consumer Protection from Unfair Trading Regulations 2008 (CPR's) and Business Protection from Misleading Marketing Regulations 2008 (BPR's) only for the guidance of intending purchasers or lessees, and do not constitute any part of an offer or contract. Details are given without any responsibility, and any intending purchasers, lessees or third parties should not rely on them as statements or representations of fact, but must satisfy themselves by inspection or otherwise as to the correctness of each of them.

We have not carried out a structural survey and the services, appliances and specific fittings have not been tested. All photographs, measurements, floor plans and distances referred to are given as a guide only and should not be relied upon for the purchase of carpets or any other fixtures or fittings. Gardens, roof terraces, balconies and communal gardens as well as tenure and lease details cannot have their accuracy guaranteed for intending purchasers. Lease details, service ground rent (where applicable) are given as a guide only and should be checked and confirmed by your solicitor prior to exchange of contracts.

No person in the employment of Fenwicks Estates Ltd has any authority to make any representation or warranty whatever in relation to this property. Purchase prices, rents or other prices quoted are correct at the date of publication and, unless otherwise stated, exclusive of VAT.

Data Protection: We retain the copyright in all advertising material used to market this Property.

Money Laundering Regulations 2017: Intending purchasers will be required to produce identification documentation once an offer is accepted.



£235,000

2 Wickham Court, Southwick Road, North Boarhunt, PO17 6JS

Fenwicks - Fareham Office: 01329 285 500 www.fenwicks-estates.co.uk

Fenwicks

THE INDEPENDENT ESTATE AGENT