



## Kirton Gardens, E2

£3,500 Per calendar month

This well presented three bedroom split level apartment, located at Kirton Gardens. This property is spacious and light, three double bedrooms, separate kitchen and living area with a private balcony.

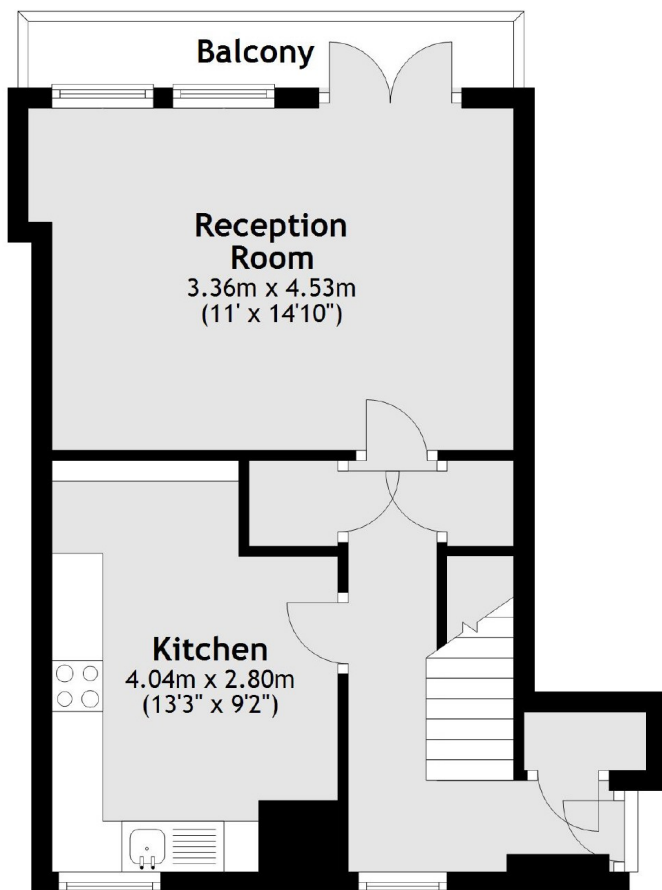
Kirton Gardens is located within a short distance to both Columbia Road and Brick Lane where you will find a large number of different bars, cafe's and restaurants.

### Features

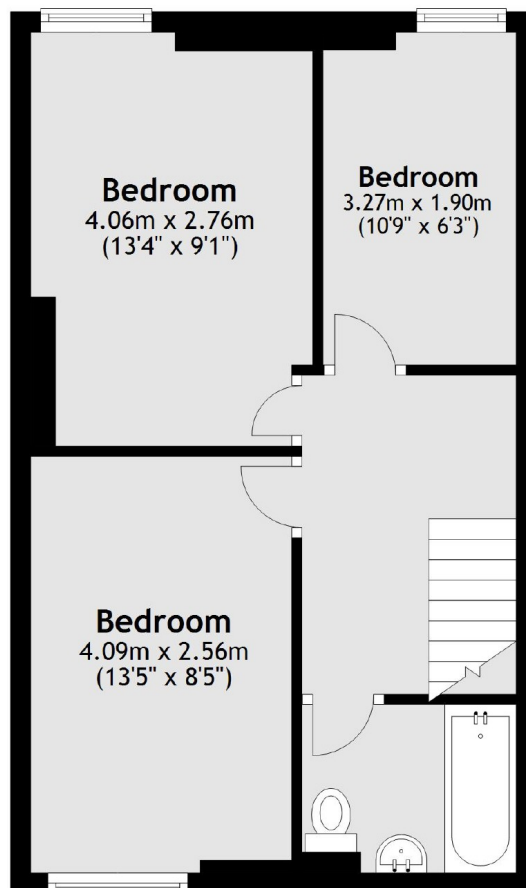
- Split Level
- Balcony
- Double Bedrooms
- Great Location
- Great Transport Links
- Hardwood Floor

# Kirton Gardens, London, E2

## Second Floor



## Third Floor



Main area: Approx. 75.3 sq. metres (810.7 sq. feet)  
Plus balconies, approx. 3.6 sq. metres (38.4 sq. feet)