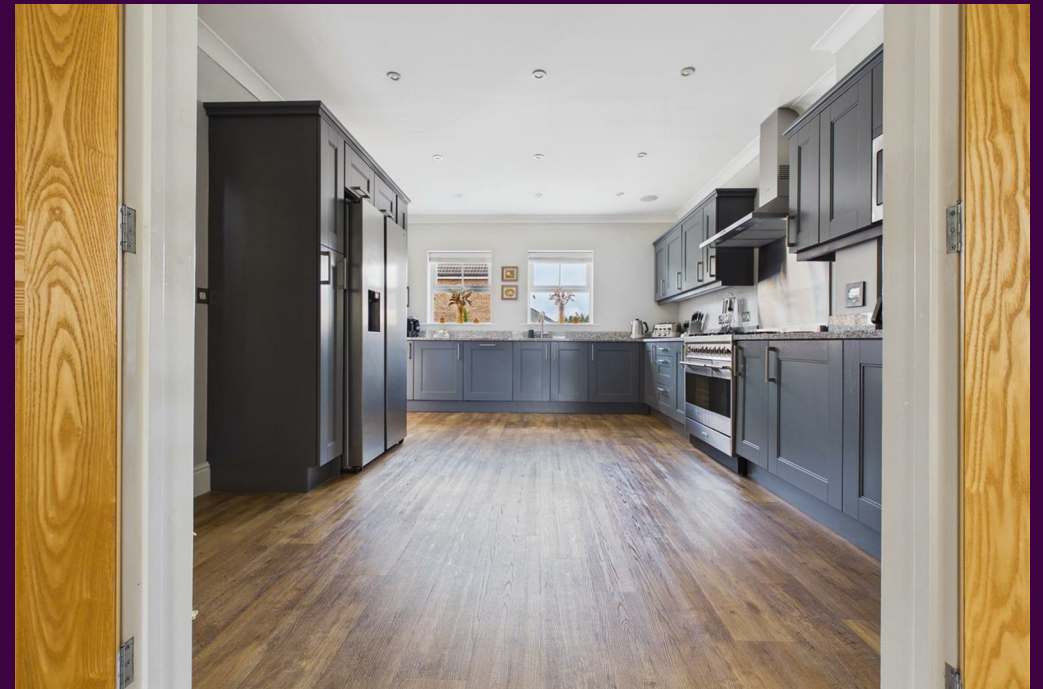
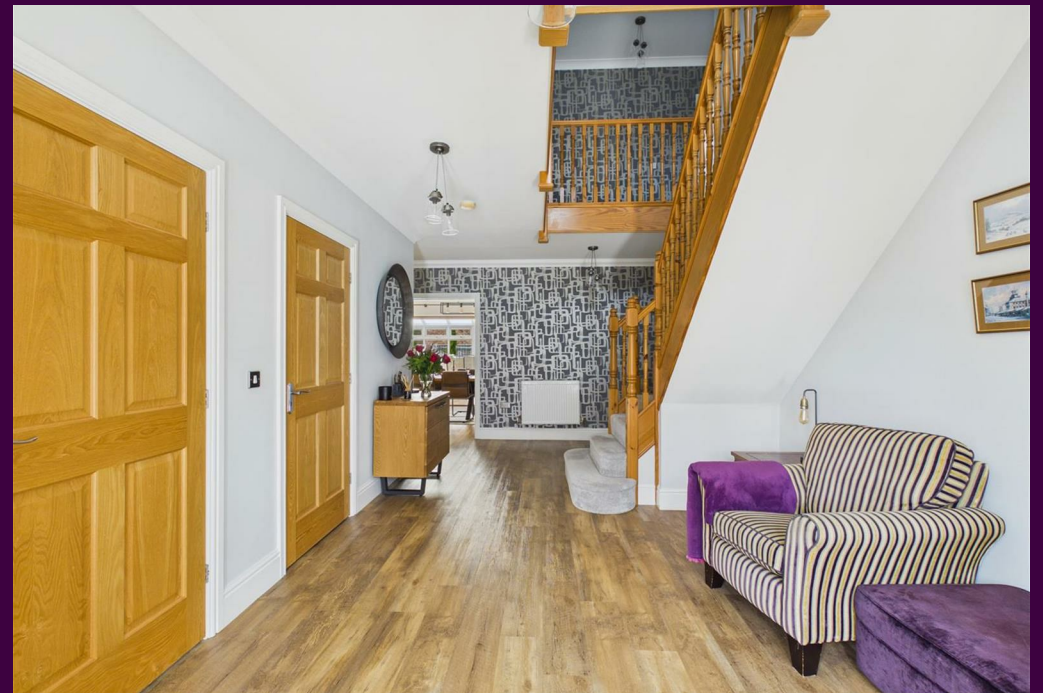


Frocester Court, Ingleby Barwick



Asking Price £680,000





This exceptionally large property delivers incredible living space that spans to almost 3000sq.ft. A former 'Charles Church' Show Home situated within Frocester Court, an address synonymous with quality, within a more established part of the favoured Rings development of Ingleby Barwick, whilst occupying a generous plot with ample parking alongside, a double garage, and large, landscaped rear garden.

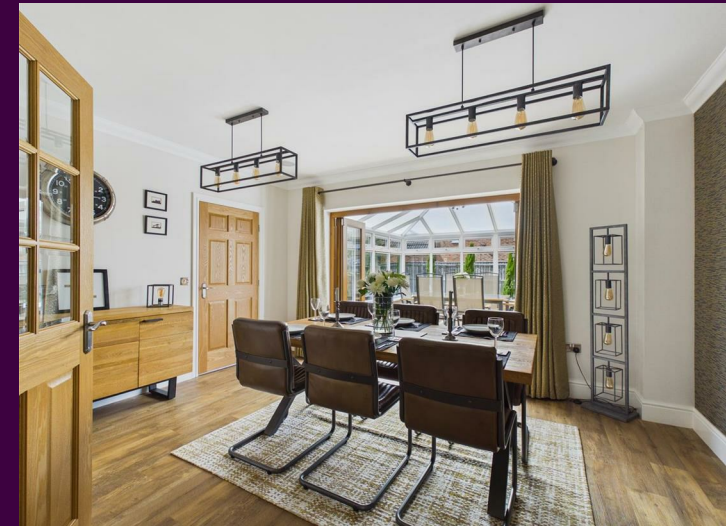
A particular feature is the vast entrance lobby and spacious galleried landing, spaces that very few homes can hold a torch to, being tasteful and brought to a fantastic standard throughout, internal inspection is absolutely necessary to fully appreciate the quality, and versatile space on offer.

Briefly, the ground floor accommodation comprises the feature entrance lobby, WC, family room which adjoins via double opening doors to the spacious kitchen/diner - bringing a sizeable range of cabinets, granite surfaces, feature range-style oven/cooker and American style fridge freezer, with coordinated utility and second ground floor WC, a further generous dining room with bi-folding doors leading to a large conservatory with window blinds, study/sitting room and separate, spacious main lounge with 'wood burner'.

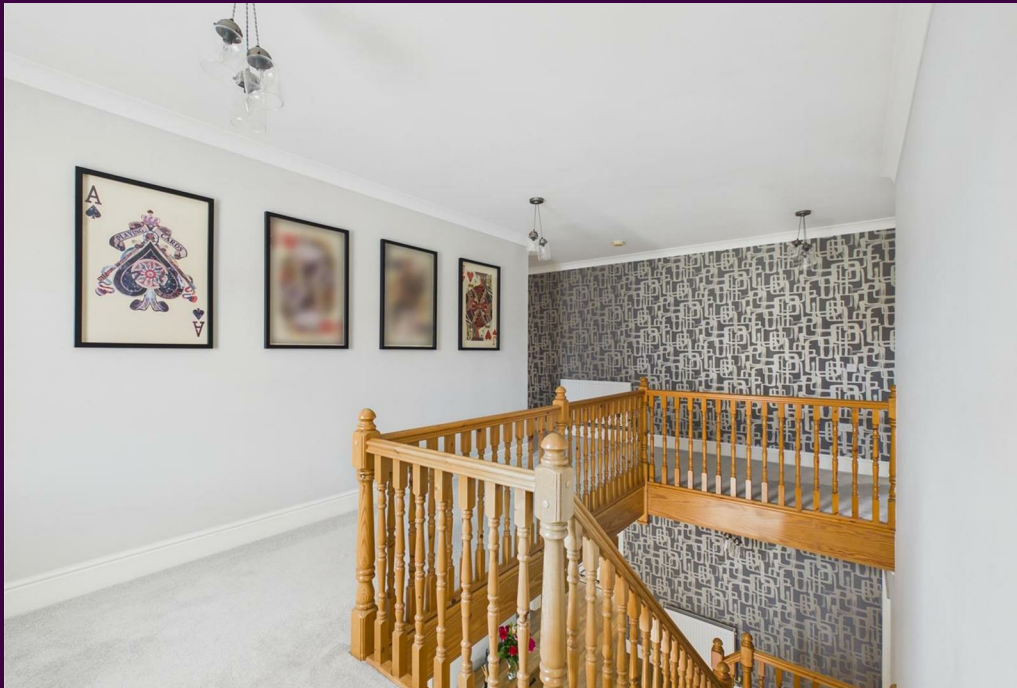


The first floor is equally as impressive, all accessed from the stunning landing, bringing five double bedrooms, four of which are ensuite - the 'Master' with a walk-through dressing area with fitted robes, whilst further fitted robes are provided in bedroom two. The separate family bathroom enjoys a full suite with stand-alone shower closet, and 'his & her' sink units.

Externally, a re-laid porcelain path leads to the entrance door, splitting the front lawns - which wrap around to the side housing established shrubs and planting, complimented by the rear garden, being fully fence enclosed, with a coordinated, and extensive porcelain patio, lawn, borders, lighting and power sockets. The side block paved drive allows ample parking and approaches the double garage.



- A stunning, and impressively large executive residence
- Delivering five double bedrooms, four being ensuite
- Four separate reception rooms offering extensive space and versatility
- Former 'Charles Church' Show Home on generous plot with large gardens
- Ample parking alongside and double garage
- Integrated sound system within six rooms
- Rare purchase opportunity
- An address synonymous with quality



www.ingleby-homes.co.uk
01642 671025

IH INGLEBY HOMES