



Earl's Court Square, SW5

£7,000 Per calendar month

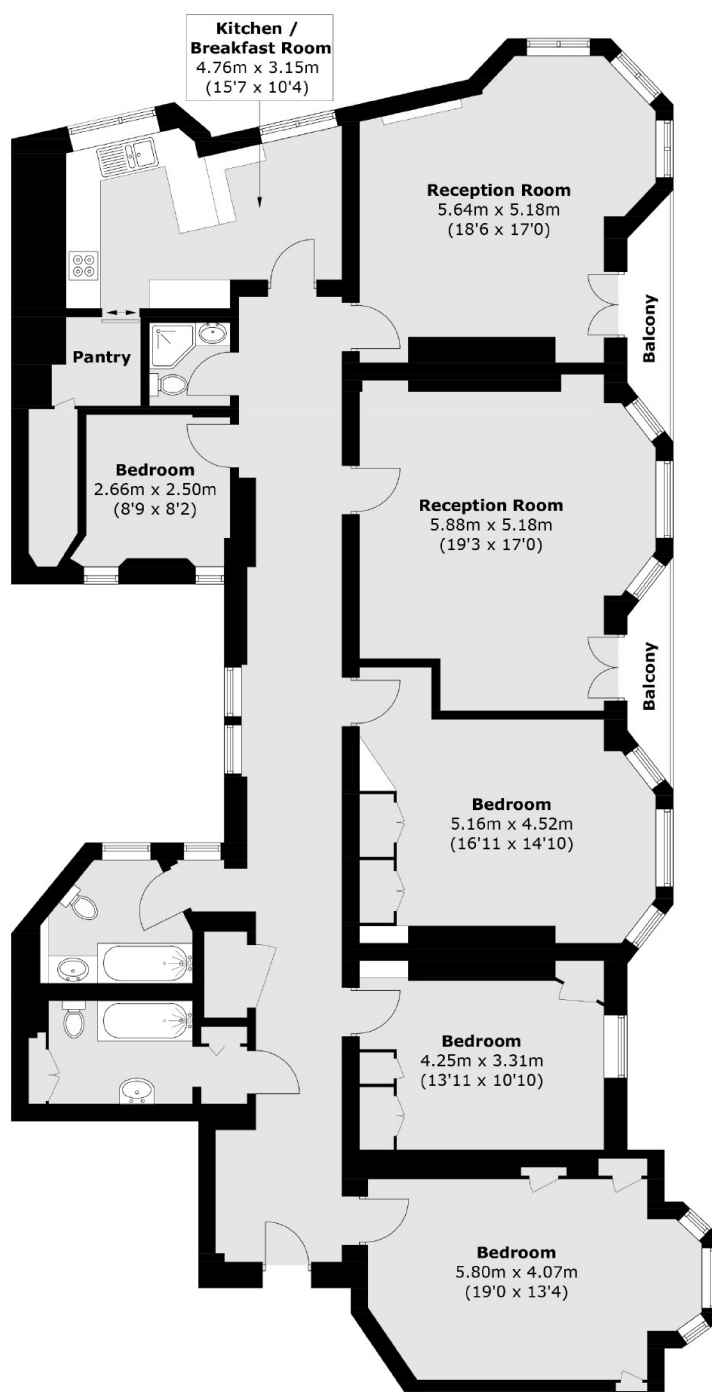
An impressive four bedroom bedroom lateral apartment on the fourth floor of a red brick mansion block with a lift and a caretaker with a recently refurbished bathroom and ample storage.

Langham Mansions is located on Earls Court square as short distance from Earls Court Tube station (District, Circle and Piccadilly lines), as well as all the amenities located close by in Earls Court and South Kensington

Features

- Four Double Bedrooms
- Balcony
- Porter
- Eat-In Kitchen
- Communal Garden Access
- Lift

Earl's Court Square, London, SW5



Fourth Floor

Total area (approx.): 187.8 sq. m (2,021.5 sq. ft)
Balcony area : 4.7 sq. m (50.6 sq. ft)