



Price

£275,000

Leasehold

1x  1x  1x 

Stafford Road,
Wallington, Surrey, SM6

OVER 60?

Secure this property
for up to **59% less!**

cubitt & west
Helping you move forwards



Main features

- Modern first floor apartment situated in a private gated development built in 2019
- Open-plan kitchen/lounge/diner with Juliet balcony
- Moments way from Wallington town centre and train station
- Immaculate condition throughout
- Lift service and communal garden

Accommodation

FIRST FLOOR

Entrance Hall

Kitchen/Lounge/Diner: 24'3 x 12'8
(7.40m x 3.86m)

Juliet Balcony

Bedroom : 13'8 x 11'3 (4.17m x 3.43m)

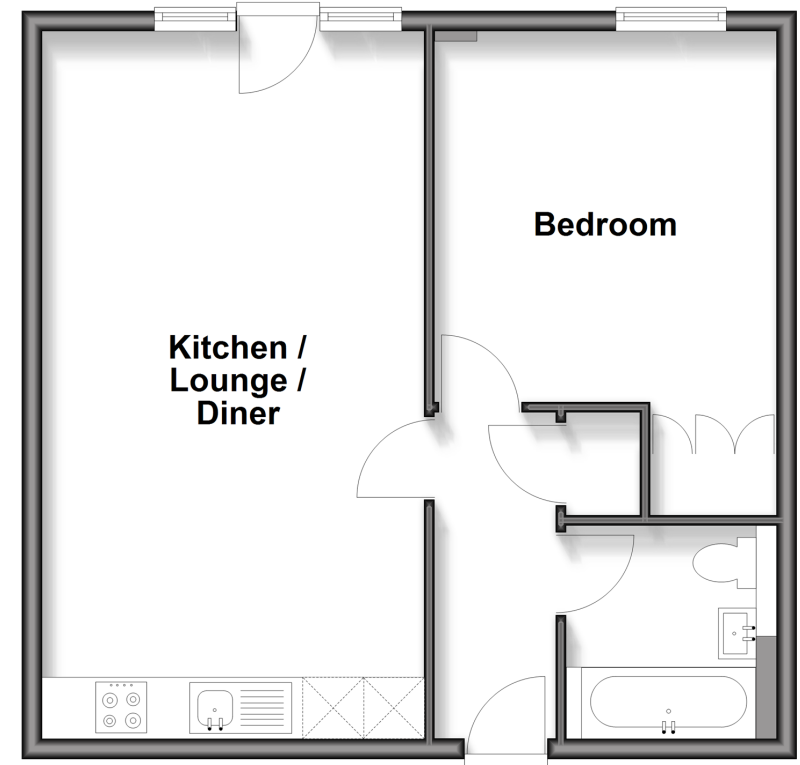
Bathroom

OUTSIDE

Communal Garden

First Floor

Approx. 50.0 sq. metres (538.5 sq. feet)



Call Wallington - 020 8647 0011 ■ cubittandwest.co.uk

- Legal advice should be taken to verify fixtures/fittings, planning, alterations and/or lease details
- Appliances & services are untested, dimensions are approximate and floor plans are not to scale
- Through a Homewise Home For Life Plan people aged 60+ can secure this property for up to 59% less, by purchasing a Lifetime Lease



22118116/20260119/GG/DK