



GLEN HEATON

exp[®] UK

@glen.heaton@exp.uk.com

glenheaton.exp.uk.com

01617 062054

48 Lingard Street, Reddish

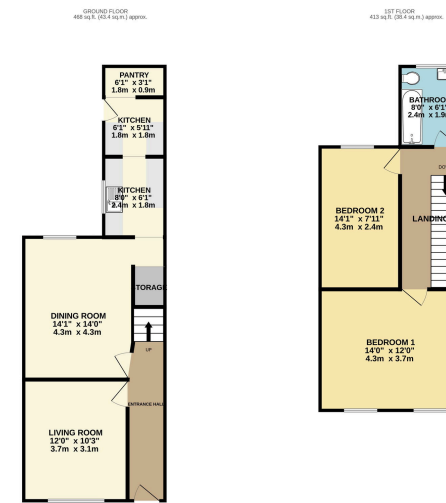
Offers Over £150,000

🛏️ 2 🚿 1 🚗 2



- Please Quote Ref GH702
- No Chain
- Two Reception Rooms
- Two Double Bedrooms
- Walking Distance To Reddish Train Station
- Walking Distance To Local Schools





TOTAL FLOOR AREA: 866 sq ft (80.0 sq m) approx.
 When areas are given they are intended to indicate the approximate area of the finished premises only. Measurements are given in feet and inches and in metres and millimetres. They are not intended to be used as a basis for any legal proceedings. The actual area may vary slightly from the area shown and is given as an approximate only.

Open Day Saturday 21st March , Please Call The Office To Book Your Time Slot.

Welcome To Lingard Street, Reddish, A Spacious Two Double Bedroom End Of Terrace Home To Make Your Very Own.

