

Octavia Mews, W9

£975,000

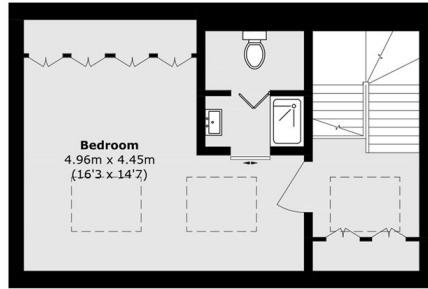
Set across three floors, this impressive mews house is tucked away within a gated development, offering ideal family living. The freehold property comprises three spacious double bedrooms, a bright open-plan kitchen and reception area, two bathrooms, an additional WC, and a private balcony.

Octavia Mews is located on Bravington Road, a quiet residential street within walking distance of the canal in Little Venice, Paddington Recreation Ground and the amenities on Shirland Road and Elgin Avenue.

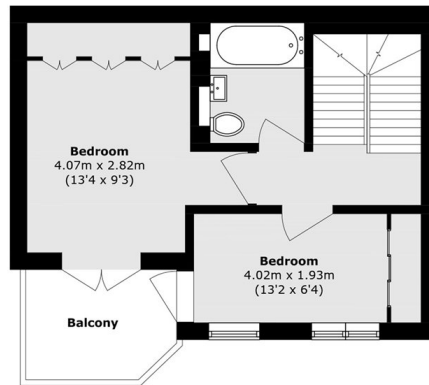
Features

- High Ceilings
- Two Bathrooms
- Ample Storage
- Private Balcony
- Designated Off-Street Parking
- Great Transport Links

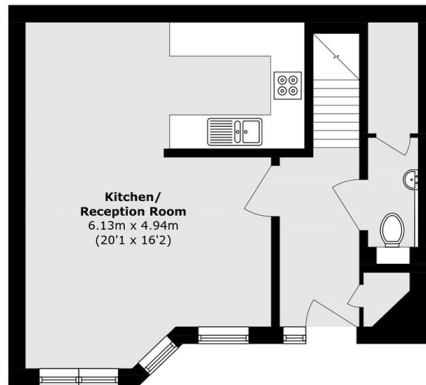
Octavia Mews, Maida Vale, W9



Second Floor



First Floor



Ground Floor

Total area (approx.): 103.6 sq. m (1115.2 sq. ft)
Balcony area (approx.): 5.0 sq. m (53.8 sq. ft)