

# Stott Close

London, SW18

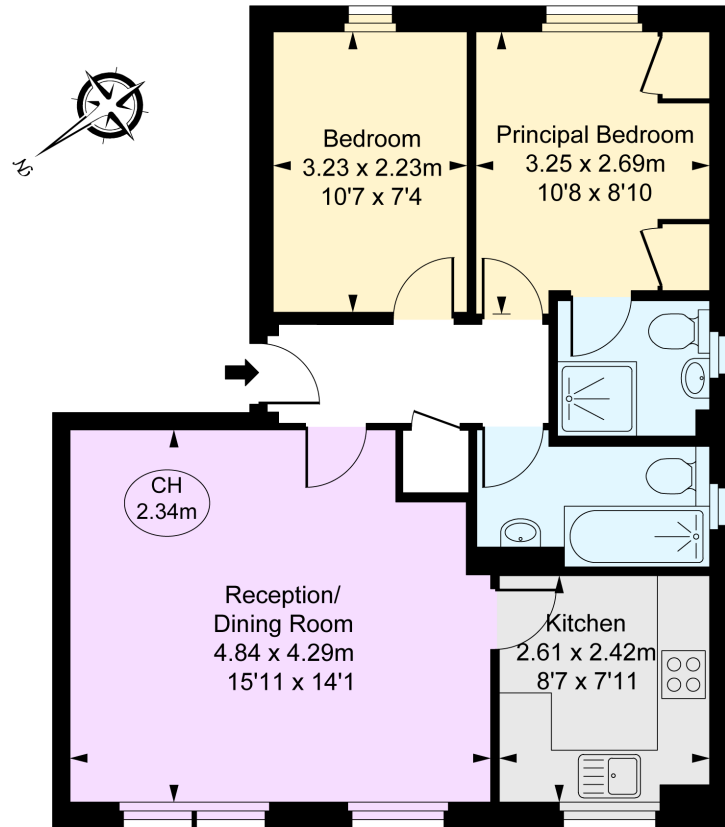
£2,000 per month  
(£461.54 per week)

A modern two bed, two bathroom ground floor apartment in a purpose built block in the beautiful John Archer Way development.

CHESTERTONS



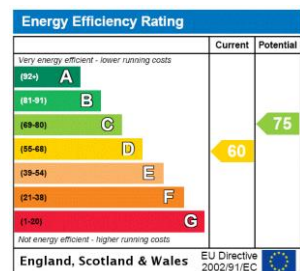
**Stott Close, SW18**  
 Approximate Gross Internal Area  
**54.53 sq m / 587 sq ft**  
 ( CH = Ceiling Heights )



**Ground Floor**

This plan is not to scale. It is for guidance and not for valuation purposes.  
 All measurements and areas are approximate only, and have been prepared in accordance with the current edition of the RICS Code of Measuring Practice.  
 © Fulham Performance

**Minimum Term:** 12 months  
**Deposit Required:** 5 weeks  
**Local Authority:** Wandsworth  
**Council Tax Band:** E  
**EPC Rating:** D  
**Furnished, Part Furnished, Unfurnished**



***Chestertons Wandsworth Lettings***

11 Huguenot Place  
 London  
 SW18 2EN  
 wandsworth@chestertons.co.uk  
 02081047540  
 chestertons.co.uk

Additional tenant charges apply (fees apply to non-AST tenancies only)

Tenancy Agreement Fee: £300  
 References per Tenant/Guarantor: £60  
 Inventory check (approx. £100 – £250 inc. VAT)  
[chestertons.co.uk/property-to-rent/applicable-fees](http://chestertons.co.uk/property-to-rent/applicable-fees)

Chesterton Global Ltd trading as Chestertons for themselves and for the vendor of this property whose agents they are, give notice that (i) these particulars do not constitute any part of an offer or contract, (ii) all statements contained within these particulars are made without responsibility on the part of Chestertons or the vendor, (iii) whilst made in good faith, none of the statements contained within these particulars are to be relied upon as a statement or representation of fact, (iv) any intending purchasers must satisfy themselves by inspection or otherwise as to the correctness of each of the statements contained within these particulars, (v) the vendor does not make or give either Chestertons or any person in their employment any authority to make or give representation or warranty whatsoever in relation to this property. Wide angle lenses may be used. ©Copyright Chestertons | Chesterton Global Ltd | Registered Office 40 Connaught Street, Hyde Park, London W2 2AB Registered Company Number 05334580.



This paper is  
100% recyclable