

Location:

Mansell Road is conveniently located close to the green open spaces of Acton Park and Southfield Park, with an array of shops, cafés, and restaurants nearby on Churchfield Road and Chiswick High Road.

Key points:

- 4 bedrooms
- 2 bathrooms
- Victorian terrace
- 1,797 sq.ft / 167 sq.m
- 50ft east-facing rear garden
- Quiet cul-de-sac location

Do Better:

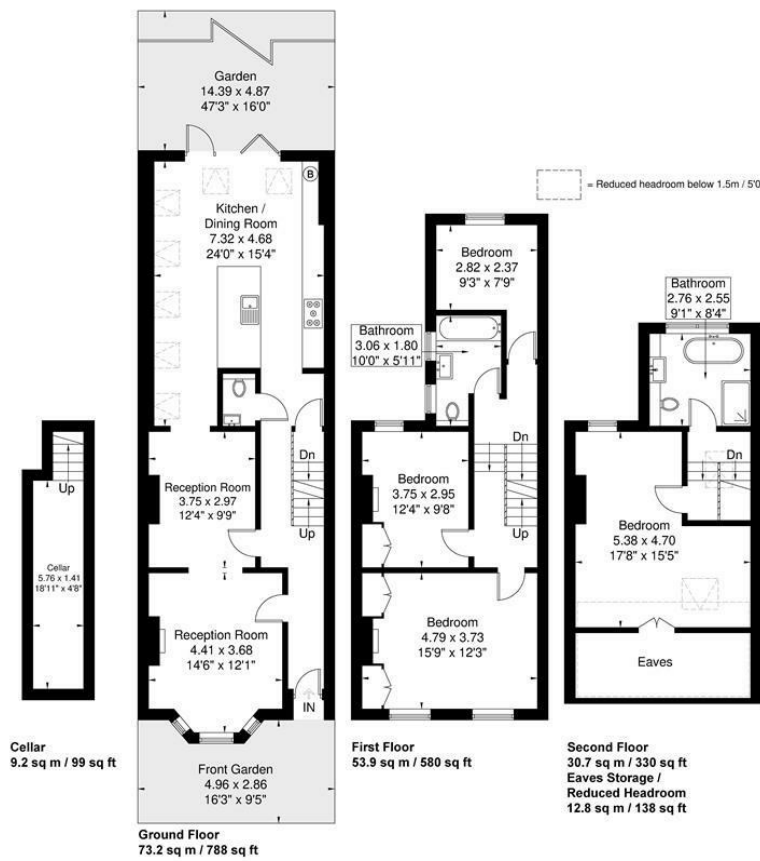
Acton
sales@astonrowe.co.uk

57-59 Churchfield Road,
Acton, London, W3 6AY

020 8992 3600



Mansell Road
 Approximate Gross Internal Area = 167.0 sq m / 1797 sq ft
 Eaves Storage / Reduced Headroom = 12.8 sq m / 138 sq ft
 Total = 179.8 sq m / 1935 sq ft



Although every attempt has been made to ensure accuracy, all measurements are approximate.
 The floorplan is for illustrative purposes only and not to scale.
 © www.perspective.co.uk

Energy Efficiency Rating		Environmental Impact (CO ₂) Rating	
Current	Potential	Current	Potential

England & Wales EU Directive 2002/91/EC

£1,250,000

Mansell Road, London W3 7QH

- 2 Reception Rooms
- 4 Bedrooms
- 2 Bathrooms

The current owner says:

The property is in a fantastic location for the local shops, schools, parks and transport links.



A beautifully presented Victorian terraced home located on a quiet tree-lined road in Acton.

The property retains period charm and features a double reception room, w/c, practical cellar, and a bright and spacious open-plan kitchen/dining area which leads out to a c. 50 ft private east-facing rear garden. The first floor offers three bedrooms and a family bathroom. The second and top floor offers a further double bedroom and second bathroom.

Mansell Road is conveniently located close to the green open spaces of Acton Park and Southfield Park, with an array of shops, cafés, and restaurants nearby on Churchfield Road and Chiswick High Road.

What's better:

A beautifully presented Victorian terraced home located on a quiet tree-lined road in Acton.

