



**JOWEBSTER**

*The Montevetro Building  
Battersea, SW11*



### Property Attributes

- 2 Bedrooms (Master En-Suite with Dressing Area)
- 2 Bathrooms (1 En-Suite)
- Reception/Dining Room
- Bulthaup Kitchen (with Gaggenau & Miele Appliances)
- Study
- Balcony
- Cloakroom with Laundry Facilities
- Two Underground Car Parking Spaces
- Gym; Sauna and Tennis Court
- 24/7 Security and Concierge



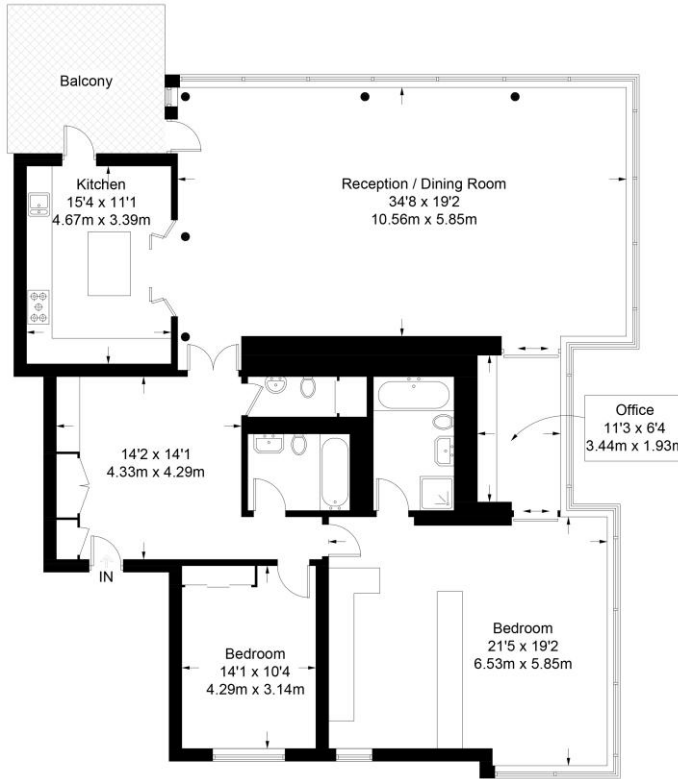
### Terms

- Price: £2,750,000
- Borough: Royal Borough of Kensington And Chelsea
- Tenure: Share of Freehold 971 approx. years remaining
- Service Charge: Approx. £23,800 per annum
- Ground Rent: Peppercorn
- Council Tax Band: Band H



# Montevetro Building

Approximate Gross Internal Area = 1999 sq ft / 185.7 sq m



## First Floor

Not to scale, for guidance only and must not be relied upon as a statement of fact.  
All measurements and areas are approximate only and have been prepared in accordance with the current edition of the RICS Code of Measuring Practice.

+44 (0) 20 7349 7055  
sales@jowebster.com

### Misdescription Act

We wish to advise prospective purchasers that these sales particulars are believed to be correct, but their accuracy is in no way guaranteed, nor do they form any part of contract. We have not carried out a detailed survey nor tested the services, appliances or specific fittings. Measurements are approximate.