



Trevi Roman Road, Dibden Purlieu
£579,950



ANTHONY JAMES
PROPERTIES



Trevi Roman Road

Dibden Purliu, Southampton

This extended four bedroom detached house is situated within a short walk of the open forest and is offered with no onward chain. The property features a generous L shaped lounge, a well appointed kitchen, a spacious dining room and a bright conservatory, making it ideal for family living and entertaining. There are four generous bedrooms, a family bathroom, an ensuite and a ground floor WC. The house benefits from double glazing and gas fired central heating throughout, ensuring comfort all year round. With flexible accommodation and ample storage, this home is perfect for families seeking space and versatility.

The outside space is equally impressive. A five bar gate opens onto a block paved driveway, providing parking for several vehicles and leading to a secure gated area and the garage entrance. The main garden has been thoughtfully landscaped and features mature shrubs, plants, trees, flowers and a pond. The low maintenance rear garden offers a patio area directly behind the house, with a lawn and pathway leading to an additional patio seating area at the rear. There is also access to a workshop via a pedestrian door. The single garage, accessed via an up and over door, offers further parking or storage solutions, with power and lighting connected.

Council Tax band: E

Tenure: Freehold



Energy Efficiency Rating		Current	Potential
Very energy efficient - lower running costs			
(92+)	A		
(81-91)	B		
(69-80)	C		80
(55-68)	D	61	
(39-54)	E		
(21-38)	F		
(1-20)	G		
Not energy efficient - higher running costs			
England, Scotland & Wales			EU Directive 2002/91/EC



1 Southward House
Dibden Purliu SO45 4PT

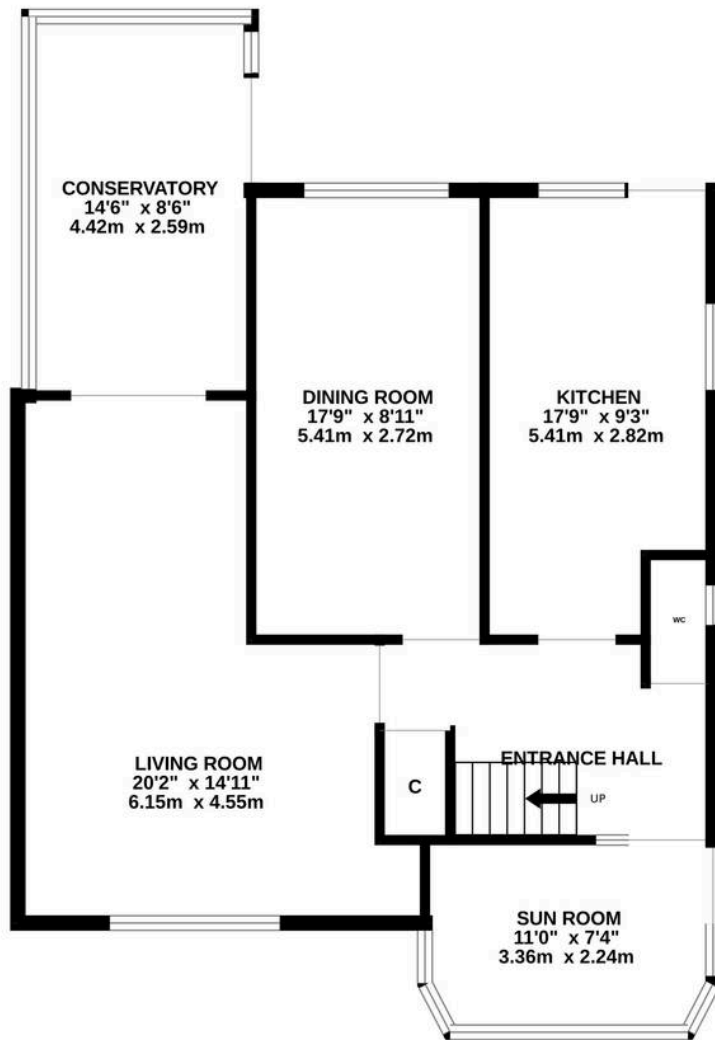


T: 02380 844405
info@anthonyjamesproperties.co.uk

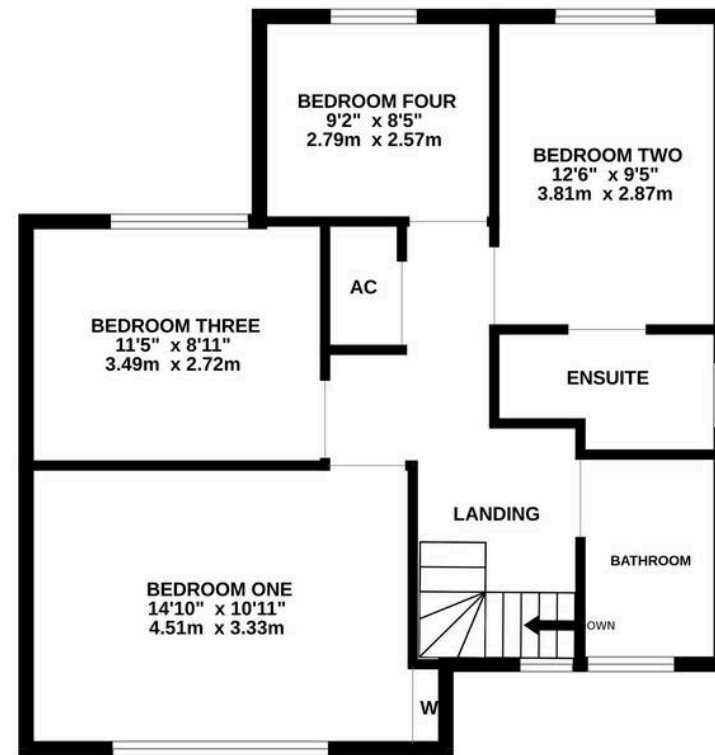




GROUND FLOOR
843 sq.ft. (78.4 sq.m.) approx.



1ST FLOOR
642 sq.ft. (59.6 sq.m.) approx.



TOTAL FLOOR AREA : 1485 sq.ft. (138.0 sq.m.) approx.

Whilst every attempt has been made to ensure the accuracy of the floorplan contained here, measurements of doors, windows, rooms and any other items are approximate and no responsibility is taken for any error, omission or mis-statement. This plan is for illustrative purposes only and should be used as such by any prospective purchaser. The services, systems and appliances shown have not been tested and no guarantee as to their operability or efficiency can be given.