



House - Terraced

MARKYATE ROAD, DAGENHAM, RM8 2LB

PCM

£1,700

FEATURES

- Two Bedroom
- Gas Central Heating
- Council Tax Band C
- First Floor Shower Room
- Mid Terraced House
- UPVC Double Glazing
- Lounge
- Available now!



STEPS

Estate Agents

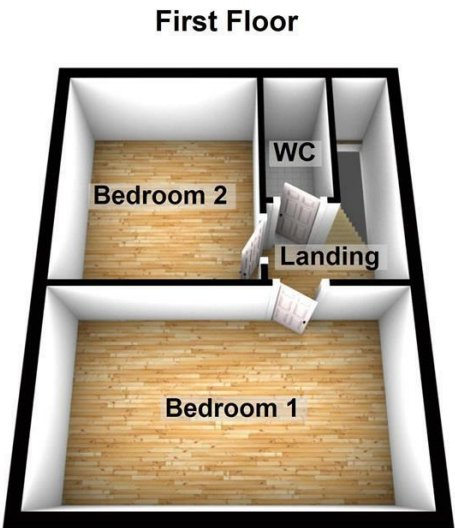
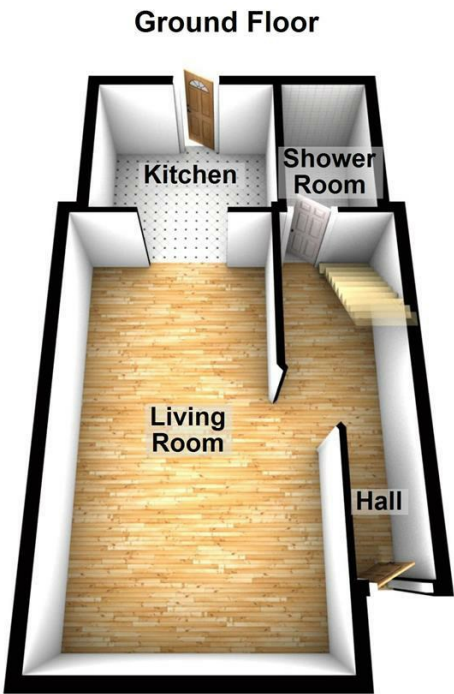
2 Bedroom House - Terraced located in Dagenham

Nestled on the charming Markyate Road in Dagenham, this delightful terraced house presents an excellent opportunity for those seeking a comfortable and inviting home. With two well-proportioned reception rooms, this property offers ample space for both relaxation and entertaining. The layout is thoughtfully designed, ensuring a warm and welcoming atmosphere throughout.

The house features two cosy bedrooms, perfect for a small family or professionals looking for a peaceful retreat. The bathroom is conveniently located, providing essential amenities for everyday living.

This property is ideally situated in a vibrant community, with local shops, schools, and parks within easy reach, making it a fantastic choice for families and individuals alike. The surrounding area boasts excellent transport links, ensuring that commuting to central London and beyond is both straightforward and efficient.

In summary, this terraced house on Markyate Road is a wonderful opportunity for anyone looking to establish a home in Dagenham. With its inviting spaces and convenient location, it is sure to appeal to a variety of buyers. Do not miss the chance to make this charming property your own.



Call us on
020 8593 5933
dagenham@steps.me.uk
www.steps.me.uk

Council Tax Band
C

Energy Efficiency Rating		
	Current	Potential
Very energy efficient - lower running costs		
(92 plus) A		87
(81-91) B		
(69-80) C	72	
(55-68) D		
(39-54) E		
(21-38) F		
(1-20) G		
Not energy efficient - higher running costs		
England & Wales		EU Directive 2002/91/EC

Agents Note: Whilst every care has been taken to prepare these particulars, they are for guidance purposes only. All measurements are approximate and are for general guidance purposes only and whilst every care has been taken to ensure their accuracy, they should not be relied upon and potential buyers are advised to recheck the measurements.

