



# MARYLEBONE ROAD, NW1

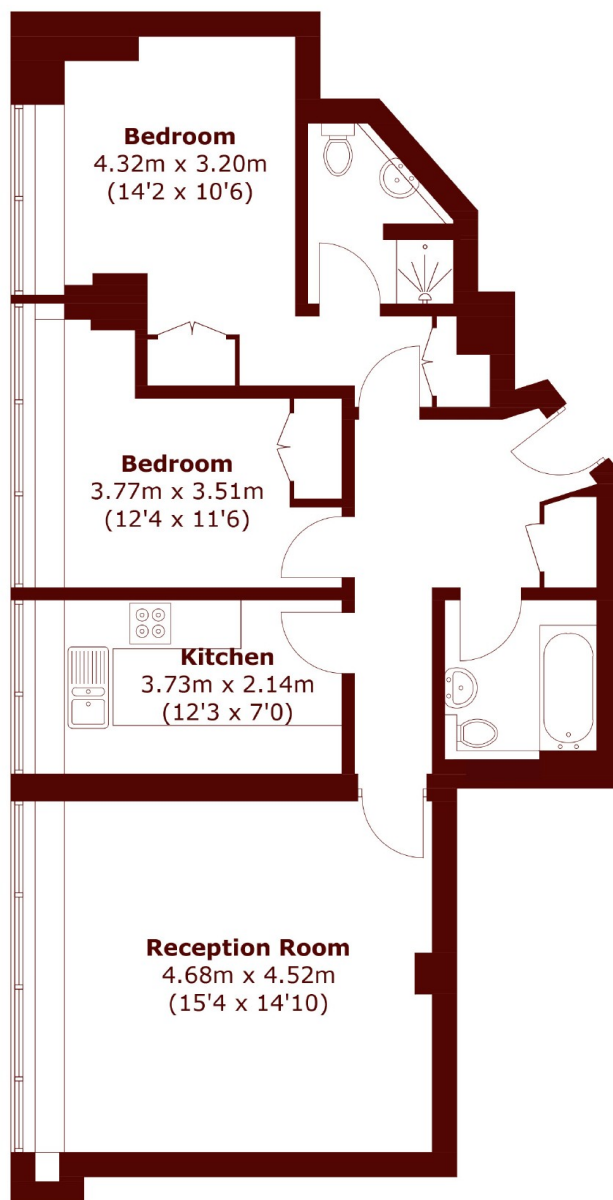
£850,000

A contemporary and stylish apartment with large windows and an abundance of natural light situated in this modern building located moments from Marylebone and Baker Street Stations.

Two bedrooms  
Two bathrooms  
Reception Room

24 hour Concierge  
Lift  
Marylebone Station

# STEP INSIDE MARYLEBONE ROAD



## Seventh Floor

Total area (approx.): 73.9 sq. m (795.4 sq. ft)

Marylebone & Mayfair  
020 7935 1775

Energy Rating: C We aim to make our particulars both accurate and reliable. However, they are not guaranteed; nor do they form part of an offer or contract. If you require clarification on any points then please contact us, especially if you're traveling some distance to view. Please note that appliances and heating systems have not been tested and therefore no warranties can be given as to their good working order

MARSH &  
PARSONS