

## Spencers Road, Horsham

Offers Over £425,000

3 1 1

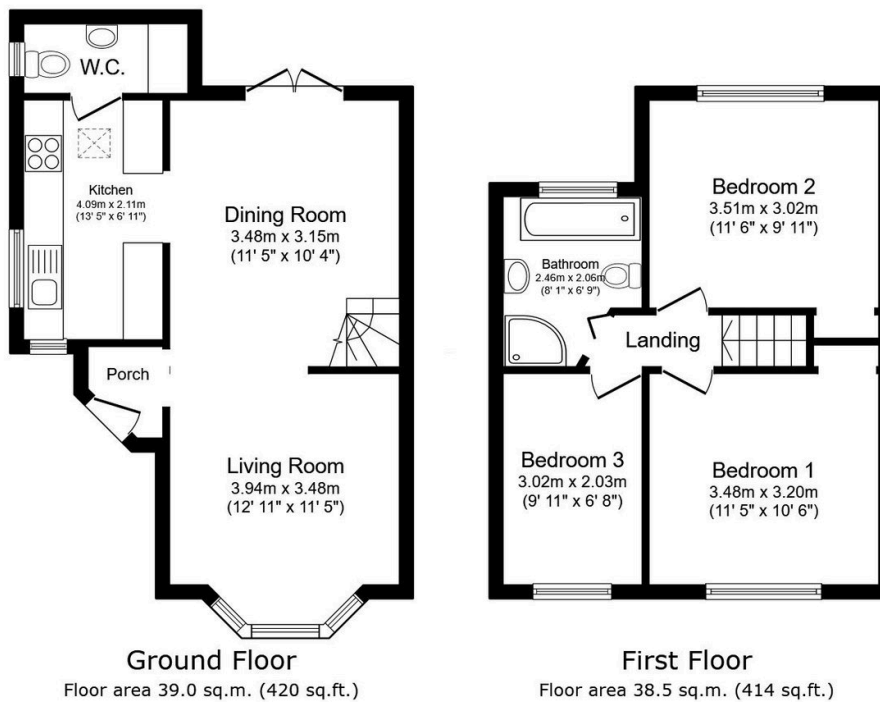


An Extended Period Home located close to Popular Schools, boasting a 25ft Bay Fronted Living Area, potential to Convert the Loft (stpp) and Off Street Parking.

Tenure: Freehold  
Council Tax Band: D  
EPC: Current D - Potential B

## Key Features

- Watch Our Video Tour
- 25ft Bay Fronted Living Area
- Covered Driveway Parking
- Potential To Convert The Loft (stpp)
- Family Bathroom With Bath & Shower
- Extended Period Home
- Double Aspect Kitchen
- Low Maintenance Rear Garden
- Close To Popular Schools
- Ground Floor WC/Utility



Total floor area: 77.5 sq.m. (834 sq.ft.)

This floor plan is for illustrative purposes only. It is not drawn to scale. Any measurements, floor areas (including any total floor area), openings and orientations are approximate. No details are guaranteed, they cannot be relied upon for any purpose and do not form any part of any agreement. No liability is taken for any error, omission or misstatement. A party must rely upon its own inspection(s). Powered by www.Propertybox.io