



Little Bolton Terrace

Salford



In Excess of **£140,000**

Little Bolton Terrace

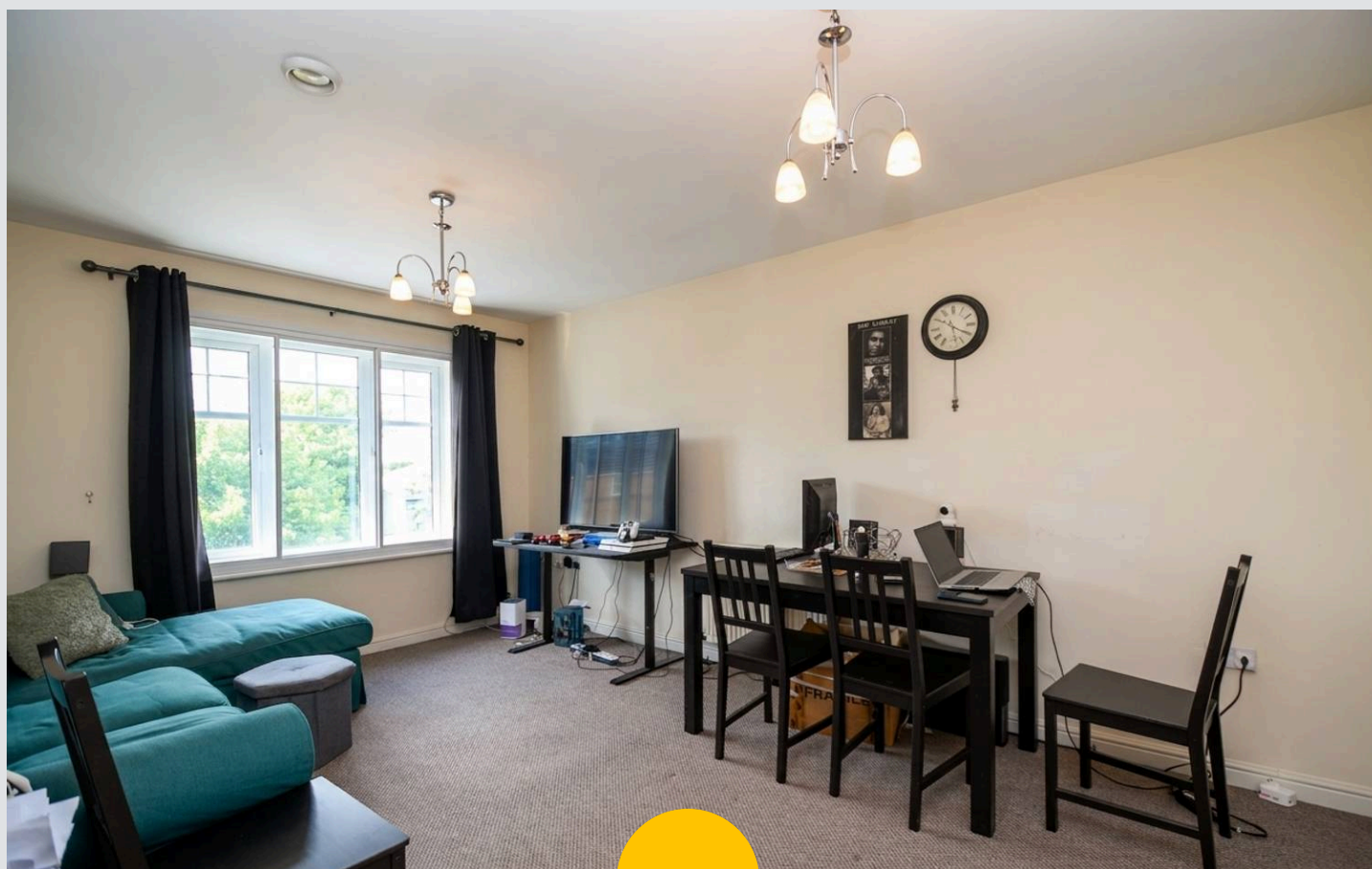
Salford

This fantastic TWO DOUBLE BEDROOM APARTMENT is situated on the third floor and boasts a MODERN FITTED KITCHEN AND BATHROOM, AND SECURE GATED ALLOCATED PARKING!

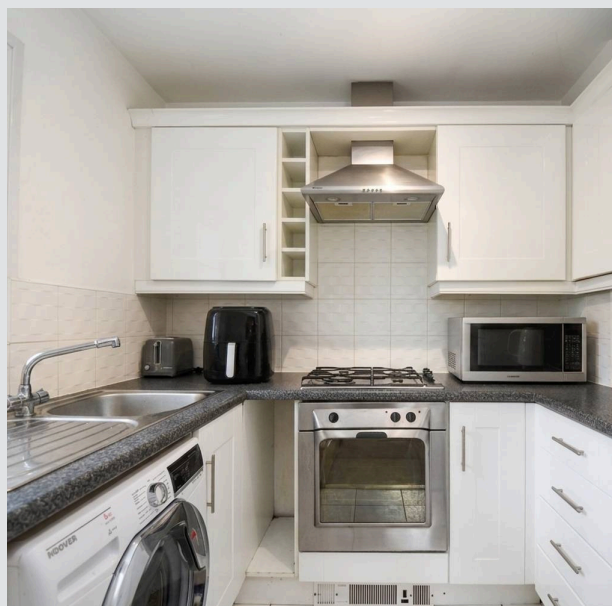
Council Tax band: A

Tenure: Leasehold

- Two double bedroom apartment situated on the third floor and coming to the market CHAIN FREE!
- Located within walking distance to local transport links
- Spacious lounge
- Two double bedrooms, with the master benefitting from an en-suite shower room
- Three-piece bathroom suite and a fitted kitchen
- Secure gated allocated parking
- Surrounded by excellent amenities
- Within easy access of excellent transport links into Salford Quays, Media City and Manchester City Centre!



HILLS



Entrance Hallway
16' 8" x 7' 11" (5.07m x 2.42m)

Lounge
15' 9" x 11' 1" (4.81m x 3.38m)

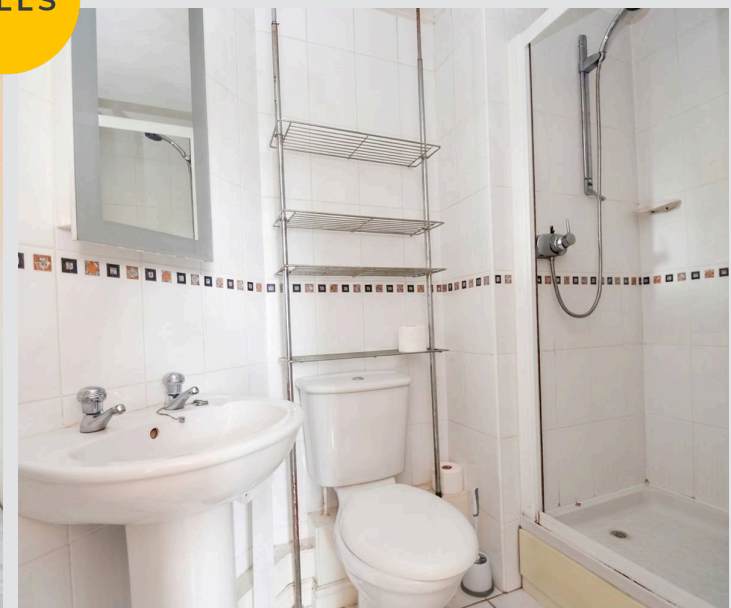
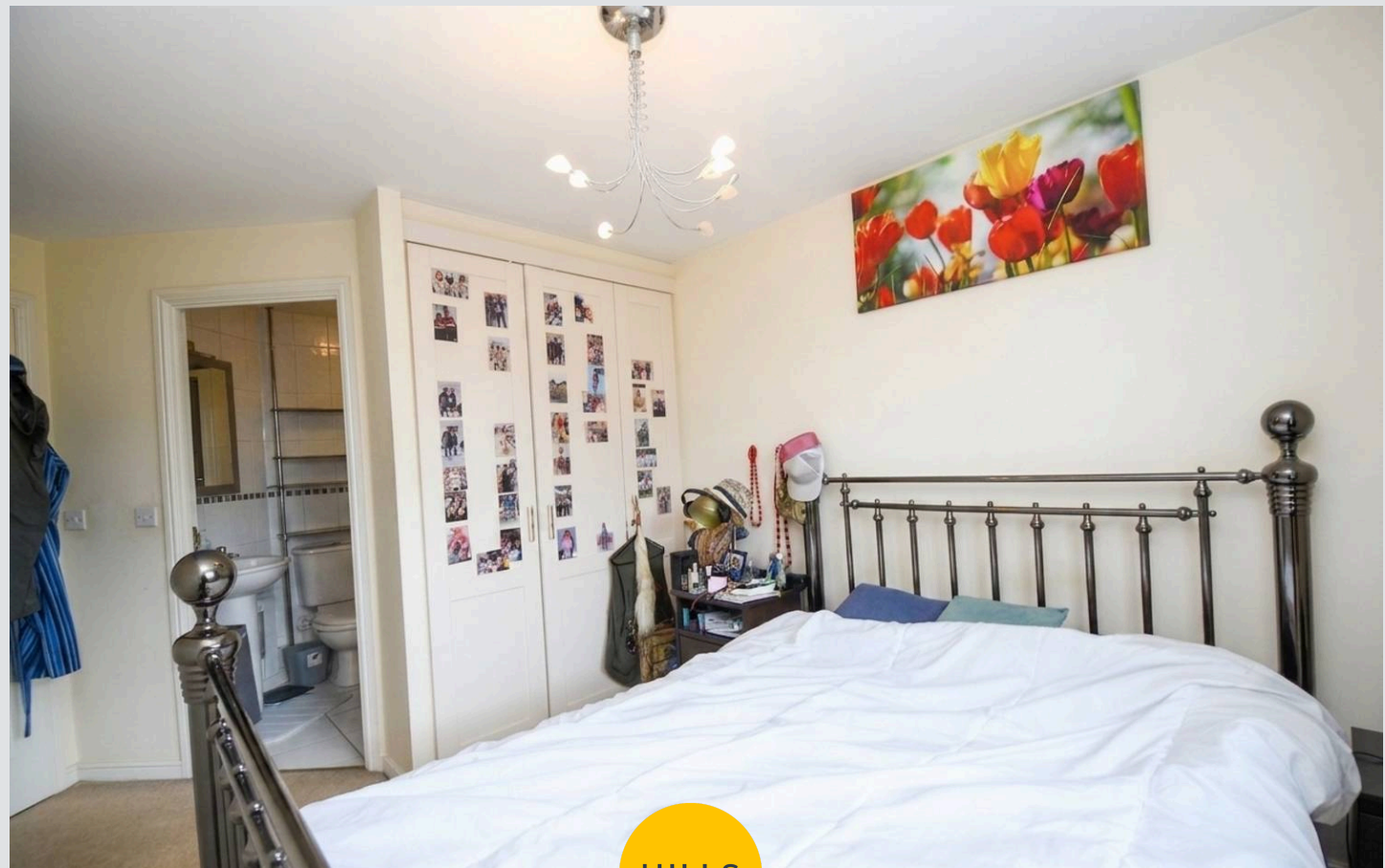
Kitchen
7' 0" x 7' 9" (2.13m x 2.37m)

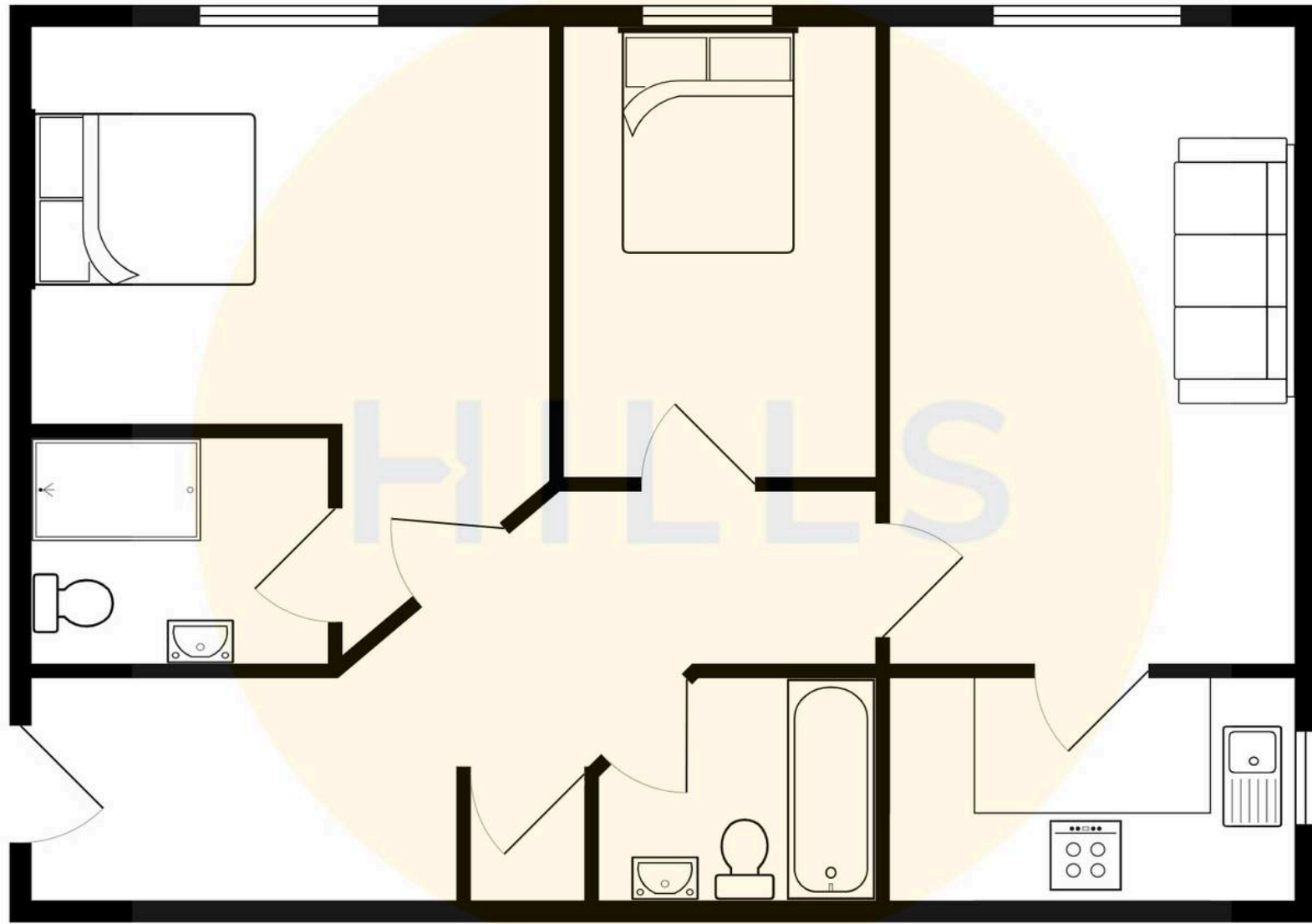
Bedroom One
13' 1" x 8' 8" (3.99m x 2.65m)

En suite
6' 2" x 7' 7" (1.89m x 2.30m)

Bedroom Two
12' 2" x 5' 8" (3.71m x 1.72m)

Bathroom
6' 4" x 6' 8" (1.94m x 2.04m)







Hills | Salfords Estate Agent

Hills Residential, Sentinel House Albert Street – M30 0SS

0161 707 4900

sales@hills.agency

www.hills.agency/



By law, we are required to conduct anti-money laundering checks on all potential buyers and sellers. In line with HMRC guidelines, our trusted partner, Coadjute, will securely manage these checks on our behalf. A non-refundable fee of £45 + VAT per person will apply, and Coadjute will handle the payment. Once an offer is accepted, Coadjute will send a secure link for you to complete the biometric checks. These checks must be completed before we can send the memorandum of sale to all parties. PLEASE NOTE: The Agent has not tested any equipment, fixtures, fittings or services so cannot verify that they are in working order or fit for the purpose. References to the properties tenure are based on information supplied by the seller. You are advised to check the availability of this property before travelling any distance to view. Every effort has been made to ensure these particulars are correct and not misleading but their accuracy is not guaranteed nor do they form part of any contract.