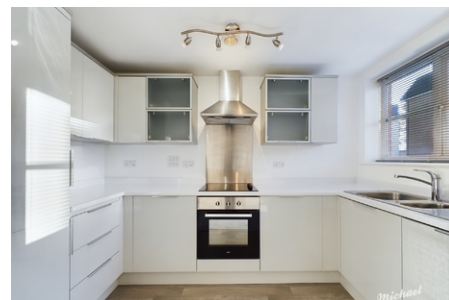


8 Viridian Square, Aylesbury, Buckinghamshire HP21 7FX

£1,300 PCM



Michael Anthony Lettings Aylesbury are pleased to present to the market this beautifully presented two bedroom first floor flat located on the popular Viridian Square development, only a short walk away from Aylesbury town centre and mainline train station. The accommodation comprises; entrance hallway, kitchen with fitted appliances, lounge/dining room with Juliet balcony, two bedrooms with an en-suite to master, family bathroom and allocated parking directly to the front.



- **Available Zero Deposit Guarantee**
- TOWN CENTRE LOCATION
- KITCHEN WITH FITTED APPLIANCES
- WALK TO MAINLINE TRAIN STATION
- ALLOCATED PARKING
- EN-SUITE TO MASTER