



## Killieser Avenue, SW2

£1,950 Per calendar month

A stunning one bedroom first floor flat located in Telford Park. The flat has been finished to a very high standard, split over two levels, offering a separate living/ kitchen area and large communal garden.

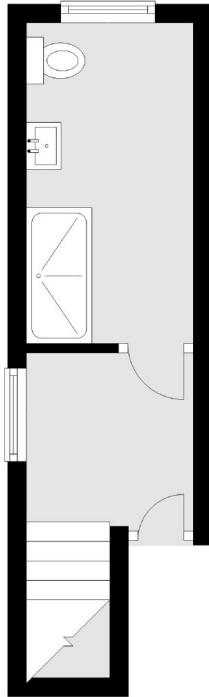
This property is located in the heart of Telford Park Conservation Area. It is just minutes from Streatham Hill Station, which provides access to London Victoria in under 20 minutes.

### Features

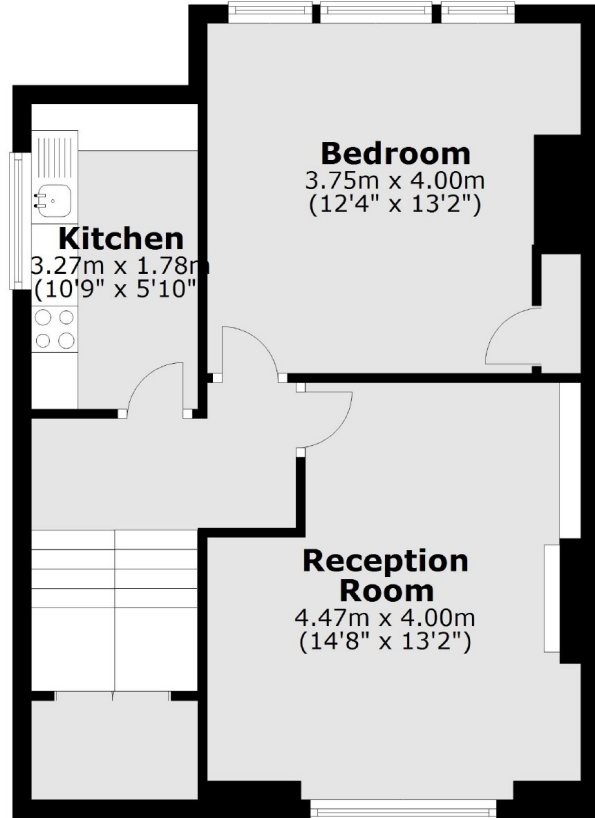
- One Double Bedroom
- Communal Garden
- Split Level
- Modern Bathroom
- Separate Kitchen
- Great Location

Killieser Avenue,  
London, SW2

**First Floor**



**Second Floor**



Total area: approx. 58.4 sq. metres (628.8 sq. feet)