



SHEARS LANE, SW16

£795,000

- Three bedrooms
- Large private garden
- Off street private parking
- Excellent condition
- Modern gated development
- Energy rating: B





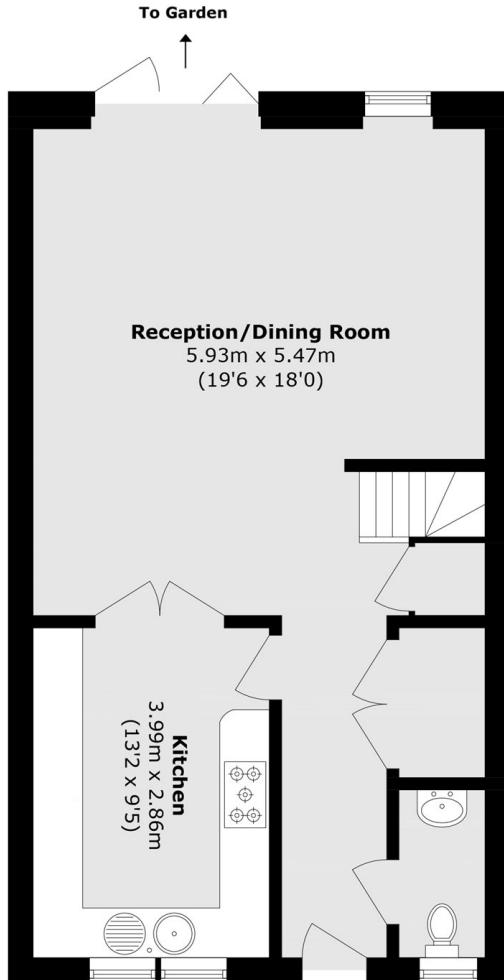
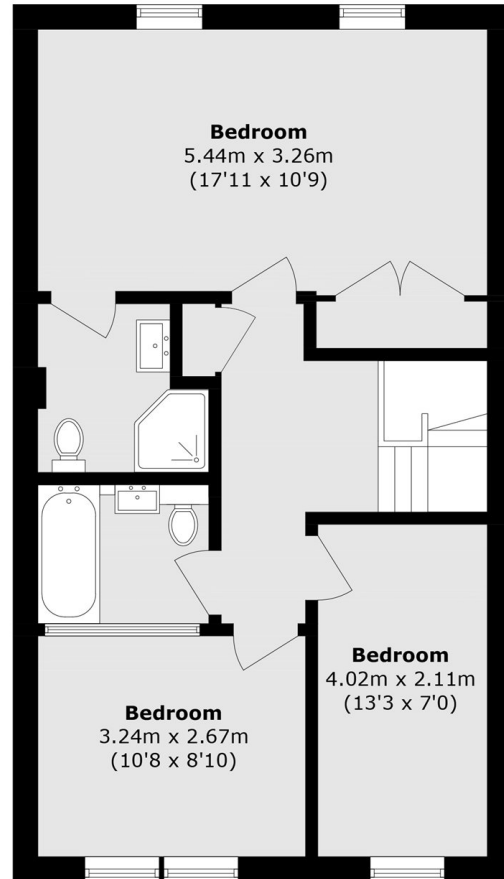
ABOUT THE HOME

Situated on the desirable Shears Lane in Streatham which is a modern gated residential development. This well-presented three bedroom, two-bathroom home offers an excellent balance of space, comfort, and practicality ideal for families and professionals alike.

Shears Lane is a quiet residential road located within easy reach of the vibrant amenities of Streatham High Road, offering a wide selection of shops, cafés, and restaurants. Excellent transport links are nearby, with Streatham and Streatham Common stations providing direct access into Central London. The area is also well known for its green open spaces, including nearby commons, contributing to its strong appeal as a residential location.






Ground Floor

First Floor

Total area (approx.): 110.1 sq. m (1185.5 sq. ft)

JACKSONS STREATHAM

1-3 De Montfort Parade,
Streatham High Road,
Sales: 020 8487 3179
Lettings: 020 8487 3180

Energy Rating: B We aim to make our particulars both accurate and reliable. However they are not guaranteed; nor do they form part of an offer or contract. If you require clarification on any points then please contact us, especially if you're traveling some distance to view. Please note that appliances and heating systems have not been tested and therefore no warranties can be given as to their good working order.