



**The Wheelhouse, Glaisdale Dale, Glaisdale**  
**Guide Price £695,000**



Tucked away within the breathtaking landscape of Glaisdale Dale, this truly special country home offers an exceptional blend of character, space and versatility, all set against a backdrop of rolling North Yorkshire countryside.

From the moment you arrive, the charm of the property is immediately apparent. The attractive stone built home, mature gardens and elevated position combine to create a wonderful sense of privacy and tranquillity, while the far-reaching rural views provide an ever-changing outlook throughout the seasons.

Internally, the property is brimming with warmth and personality. A welcoming open-plan kitchen and living space forms the heart of the home, complete with traditional cabinetry, a feature Rayburn range cooker and exposed beams that perfectly complement the country setting. The accommodation flows effortlessly, offering a mixture of cosy and spacious reception areas, including a stunning principal lounge with large feature wood burning stove, vaulted ceiling and exposed timbers, a truly impressive room ideal for both relaxing and entertaining.

The bedrooms are well-proportioned and full of character, with the principal suite offering a particularly generous and elegant retreat complete with a wood burning stove, large en-suite bathroom and matching dressing room. Throughout, the property retains a wealth of original features, carefully combined with modern comforts to create a home that feels both timeless and practical.

Externally, the gardens are beautifully established, with a combination of lawned areas, seating terraces and well-stocked borders, all designed to make the most of the spectacular surrounding views. A gravelled driveway provides ample parking and leads to a substantial garage/workshop, ideal for those seeking additional storage or hobby space.

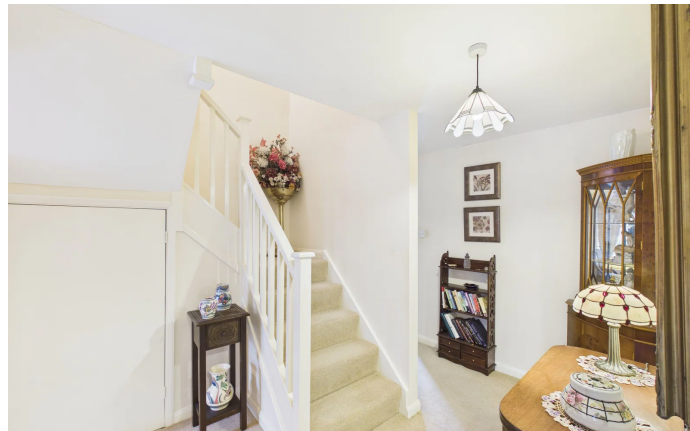
A standout feature of this property is the additional two bedroom annex, which offers fantastic flexibility. Previously used as a successful holiday cottage, it presents an excellent opportunity for those looking to generate supplementary income, or alternatively provides ideal accommodation for a dependent relative or multi-generational living.

Located in the heart of the North York Moors National Park, yet within easy reach of Whitby and the surrounding coastal villages, this is a rare opportunity to acquire a home that delivers on lifestyle, income potential and setting in equal measure.

A property of this nature is seldom available and early viewing is highly recommended to fully appreciate all that is on offer.

**Bedrooms: 6 | Bathrooms: 4 | Receptions: 2**









**Hendersons Estate Agents**  
22-23 Flowergate Whitby North Yorkshire YO21 3BA

01947 602626  
hello@myhendersons.co.uk  
myhendersons.co.uk

**Hendersons.**  
Estate & Letting Agents

**Disclaimer**  
These particulars are intended to give a fair and accurate description of the property, but their accuracy cannot be guaranteed and they do not constitute an offer or contract. All descriptions, dimensions, references to condition, fixtures and fittings, services, council tax, tenure, or any other details are given in good faith but should not be relied upon as statements of fact. Any interested parties must satisfy themselves by inspection or otherwise as to the correctness of each of the statements contained herein.