



## Pinnacle House, Home Park Mill Link Road, Kings

- Modern throughout
- Available mid August 2026
- Secure entry system
- Ground floor property
- Moments from St Albans Station
- Newly built
- Fully furnished apartment
- EPC Rating - D
- Permitted parking
- Ideal first home

**£1,250 PCM**



Cameron Estate Agents  
195 High Street,  
Middlesex, Uxbridge, UB8 1LB

E: [uxbridge@cameron.co](mailto:uxbridge@cameron.co)  
T: 01895252000

[www.cameron.co](http://www.cameron.co)

Whilst every care has been taken to ensure the accuracy of these particulars, none of the statements contained herein are to be relied upon as representations of fact. These particulars do not constitute an offer or contract.

**Description**

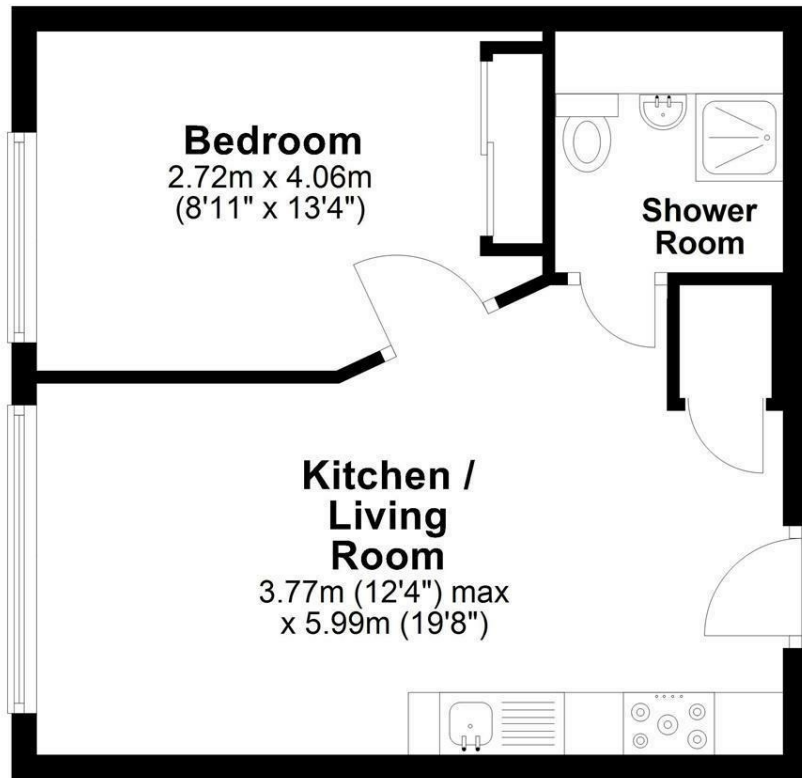
Cameron are delighted to offer this newly built, stylish, ground floor one bedroom apartment which is ideal for a single professional or couple. The apartment is presented fully furnished with show-home furniture including small appliances making this property ready to move-in immediately. The property boasts integrated kitchen with appliances including a washing machine and dryer. The kitchen is open plan to the living room. Separate shower room with chrome plated electric heated towel-rail. Double bedroom with built in sliding door wardrobes with oak timber veneer interiors. The communal areas offer lifts to all floors, low energy wall lighting and secure cycle store. Located moments from the M25, Kings Langley Village offering a range of shops, restaurants and Kings Langley Station - Available to take possession early July 2025.

**IMPORTANT NOTICE**

These particulars have been prepared upon information supplied by the Vendor and should be verified by your surveyors and solicitors. In accordance with the Property Misdescriptions Act 1991 we have prepared these sales particulars as a general guide to give a broad description of the property. They are not intended to constitute part of an offer or contract. We have not carried out a structural survey and the services, appliances and specific fittings have not been tested. All photographs, measurements, floor plans and distances referred to are given as a guide only and should not be relied upon for the purchase of carpets or any other fixtures or fittings. Lease details service charge and ground rent (where applicable) are given as a guide only and should be checked and confirmed by your solicitor prior to exchange of contract

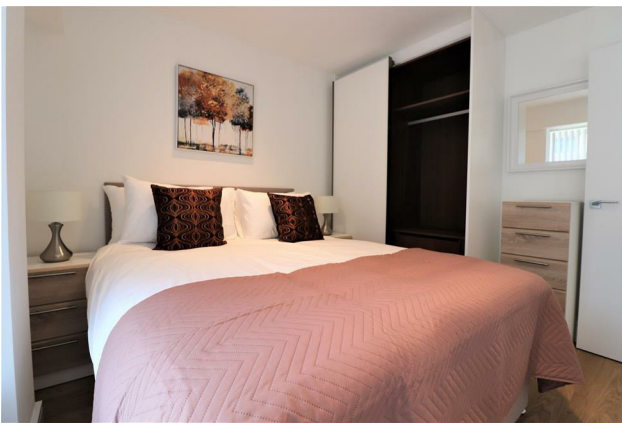
# Ground Floor

Approx. 34.7 sq. metres (373.7 sq. feet)



Total area: approx. 34.7 sq. metres (373.7 sq. feet)

# Cameron



Whilst every care has been taken to ensure the accuracy of these particulars, none of the statements contained herein are to be relied upon as representations of fact. These particulars do not constitute an offer or contract.