

Price

£1,500,000

Garnham
H Bewley

Turners Hill Road, East Grinstead



- Impressive Five Bedroomed Family Home
- Extended & Modernised Throughout
- Four Luxurious Bathroom
- Three Reception Rooms
- High Tech Specifications
- Gated Driveway For Multiple Cars
- Fabulous Secluded Grounds
- No Onward Chain

For further information contact Garnham H Bewley:

Tel: 01342 410227 | Email: eastgrinstead@garnhamhbewley.co.uk



Kingsmead, Turners Hill Road, East Grinstead, West Sussex RH19 4JZ

Occupying an impressive plot with gated parking, ample driveway space and excellent privacy, this stunningly refurbished and significantly extended family home has been finished to an exceptional standard throughout. The property enjoys a beautifully positioned south-facing garden, creating a wonderful setting for family living and entertaining.

The ground floor accommodation begins with a large and welcoming entrance hall, enhanced by feature windows that flood the space with natural light and provide excellent storage. There is also a convenient downstairs WC. Designed for modern living, the home offers a superb range of reception spaces including a family room/cinema room and a spacious living room with doors opening directly onto the garden. A separate study sits just off the living room, ideal for working from home. Integrated ceiling speakers run throughout the ground floor and extend to all bedrooms and bathrooms upstairs, creating a seamless whole-house music system.

At the heart of the home is an impressive open-plan kitchen and dining area, fitted with a comprehensive range of wall and base units and a wealth of integrated appliances including a built-in dishwasher, microwave, oven and warming drawer. The kitchen also features a five-ring electric hob with pop-up extractor, stylish ceiling lighting, integrated speakers, a one-and-a-half bowl sink with drainer and extensive drawer storage, making it both practical and beautifully designed for entertaining. The property benefits from modern and energy-efficient heating via an air source heat pump, along with a smart lighting system throughout the house. Underfloor heating serves the entire ground floor, while the first floor offers radiators with underfloor heating in the bathrooms and en-suite facilities.

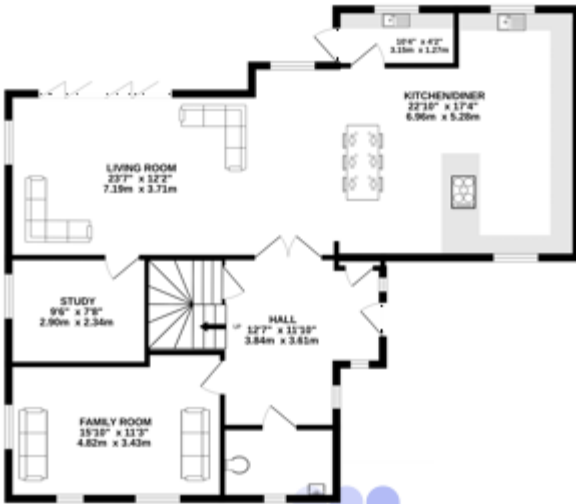
The first floor accommodation is equally impressive. The principal bedroom suite features a dressing room and a private balcony overlooking the garden with space for a table and chairs. The luxurious en-suite bathroom includes a freestanding bath with floor-mounted taps, a large double walk-in shower with oversized rainfall head and separate attachment, concealed flush WC, vanity wash hand basin with twin drawers beneath, heated towel rail and underfloor heating. Bedroom two is another beautifully proportioned room with double windows and its own stylish en-suite bathroom featuring a freestanding bath with floor-mounted taps, vanity basin with drawers, low level WC, walk-in shower with oversized head and separate attachment, and chrome heated towel rail. Bedrooms three, four and five enjoy pleasant aspects to the front or rear of the property and are served by a well-appointed family bathroom, fitted with a freestanding bath with floor-mounted taps, vanity wash basin with drawers, shower with attachment, WC, integrated speakers and heated towel rail.



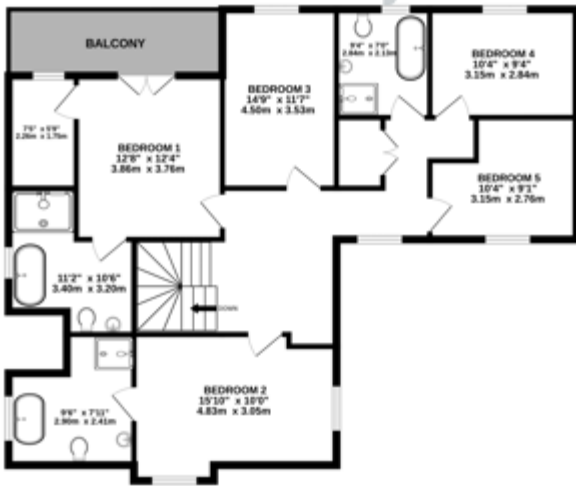
For further information contact Garnham H Bewley:

Tel: 01342410227 | Email: eastgrinstead@garnhamhbewley.co.uk

GROUND FLOOR



Garnham H Bewley
1ST FLOOR



Whilst every attempt has been made to ensure the accuracy of the floorplan contained here, measurements of doors, windows, rooms and any other items are approximate and no responsibility is taken for any error, omission or mis-statement. This plan is for illustrative purposes only and should be used as such by any prospective purchaser. The services, systems and appliances shown have not been tested and no guarantee as to their operability or efficiency can be given.
Made with Metropix 1/2025

Entrance Hall
12' 7" x 11' 10" (3.84m x 3.61m)

Downstairs Cloakroom

Living Area
23' 7" x 12' 2" (7.19m x 3.71m)

Kitchen /Diner
22' 10" x 17' 4" (6.96m x 5.28m)

Utility Room
10' 4" x 4' 2" (3.15m x 1.27m)

Study
7' 8" x 9' 6" (2.34m x 2.90m)

Family Room
15' 10" x 11' 3" (4.83m x 3.43m)

First Floor

Master Bedroom
12' 8" x 12' 4" (3.86m x 3.76m)

Balcony

Dressing Room
7' 5" x 5' 9" (2.26m x 1.75m)

En-suite
10' 6" x 11' 2" (3.20m x 3.40m)

Bedroom 2
15' 10" x 10' 0" (4.83m x 3.05m)

En-suite
9' 6" x 7' 11" (2.90m x 2.41m)

Bedroom 3
14' 9" x 11' 7" (4.50m x 3.53m)

Bedroom 4
10' 4" x 9' 4" (3.15m x 2.84m)

Bedroom 5
10' 4" x 9' 1" (3.15m x 2.77m)

Family Bathroom
9' 4" x 7' 0" (2.84m x 2.13m)





Outside, the rear garden has been thoughtfully designed for both relaxation and entertaining. An extensive shingled terrace provides a perfect outdoor entertaining space, leading up to a large expanse of lawn enclosed by fencing for privacy and security. The exterior of the property combines contemporary cladding and render, creating a striking and attractive appearance that perfectly complements the high specification interior. This remarkable property offers stylish, modern family living with exceptional attention to detail throughout.

All dimensions are approximate and are quoted for guidance only, their accuracy cannot be confirmed. Reference to appliances and/or services does not imply they are necessarily in working order or fit for the purpose. Buyers are advised to obtain verification from their solicitors as to the Freehold/Leasehold status of the property, the position regarding any fixtures and fittings and where the property has been extended/converted as to Planning Approval and Building Regulations compliance. These particulars do not constitute or form part of an offer or contract, nor may they be regarded as representations. All interested parties must themselves verify their accuracy. Where a room layout is included this is for general guidance only, it is not to scale and its accuracy cannot be confirmed

For further information contact Garnham H Bewley:
Tel: 01342 410227 | Email: eastgrinstead@garnhamhbewley.co.uk