

for sale

£485,000



Wyebeere , Eaton Bishop HEREFORD HR2 9QU

Nestled on the edge of the Hereford village of Eaton Bishop, this charming detached dormer bungalow offers the perfect family home for those looking for a countryside lifestyle. Offering five bedrooms, half-acre plot with enclosed paddock and stables and large living space for family living.

Wyebeere , Eaton Bishop HEREFORD HR2 9QU

Approach

Gated access from lane, to the front garden laid to lawn with a gravel driveway allowing for off road parking for multiple vehicles.

Hall

With window to side aspect and arch leading to living room.

Living Room

L-shaped living space with dual aspect windows to both the front and rear, this room features a wood-burning stove, an archway opening to the kitchen, stairs leading to the first floor

Kitchen

Range of units with a window to the rear aspect, spaces for a freestanding cooker and washing machine, and a door leading to the rear garden. Archway to dining room.

Dining Room

Window to rear aspect, archway to inner hall

Inner Hall

Window to rear aspect, doors to bedrooms two , three and shower room.

Bedroom One

Window to front aspect, dressing area with built-in wardrobes, door to en-suite.

En-Suite

Bath with shower attachment, wash basin and WC.

Bedroom Two

Window to front aspect, built-in triple door wardrobe.

Bedroom Three

Window to side aspect, wardrobe space with hanging rail.

Shower Room

Frosted window to rear aspect, cubicle with electric shower, toilet, pedestal wash basin.

Bedroom Four

Window to front aspect, Velux window to side aspect, built in eave storage, door to en-suite WC.

En-Suite Cloakroom

Window to front aspect, WC, wash basin.



Bedroom Five

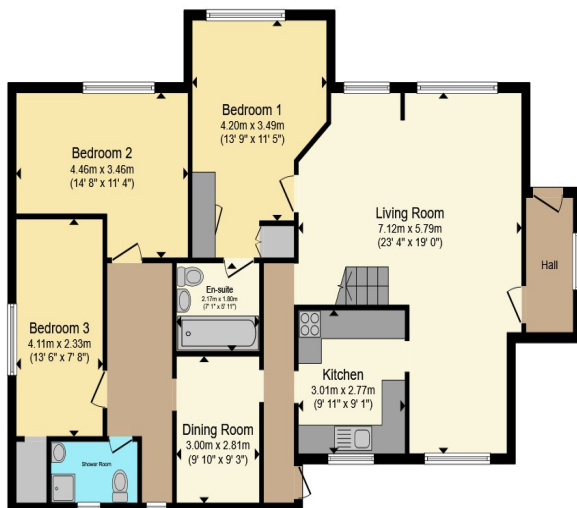
Window to front aspect, Velux window to side aspect, built in eave storage.

Outside

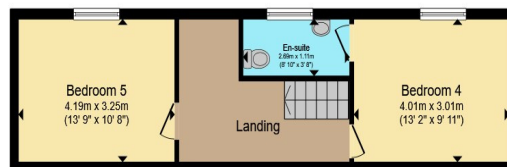
A side gate leads to the rear garden area offering patio space.

The property is positioned in the centre of the plot which extends to half-an-acre including an enclosed horse paddock with stable and storage.





Ground Floor



First Floor

Total floor area 152.6 m² (1,643 sq.ft.) approx

This floor plan is for illustrative purposes only. It is not drawn to scale. Any measurements, floor areas (including any total floor area), openings and orientation are approximate. No details are guaranteed, they cannot be relied upon for any purpose and they do not form part of any agreement. No liability is taken for any error, omission or misstatement. A party must rely upon its own inspection(s). Powered by www.propertybox.io

Connells

To view this property please contact Connells on

T 01432 267 511
E hereford@connells.co.uk

23 King Street
 HEREFORD HR4 9BX

Property Ref: HER316149 - 0005

Tenure:Freehold EPC Rating: E

Council Tax Band: E

view this property online connells.co.uk/Property/HER316149



1. MONEY LAUNDERING REGULATIONS Intending purchasers will be asked to produce identification documentation at a later stage and we would ask for your co-operation in order that there will be no delay in agreeing the sale. 2. These particulars do not constitute part or all of an offer or contract. 3. The measurements indicated are supplied for guidance only and as such must be considered incorrect. Potential buyers are advised to recheck measurements before committing to any expense. 4. We have not tested any apparatus, equipment, fixtures, fittings or services and it is in the buyers interest to check the working condition of any appliances.

Connells Residential is registered in England and Wales under company number 1489613, Registered Office is Cumbria House, 16-20 Hockliffe Street, Leighton Buzzard, Bedfordshire, LU7 1GN. VAT Registration Number is 500 2481 05.

see all our properties at www.connells.co.uk | www.rightmove.co.uk | www.zoopla.co.uk