

FLETCHERS

ESTATE AGENTS



Goldhawk Road, W12

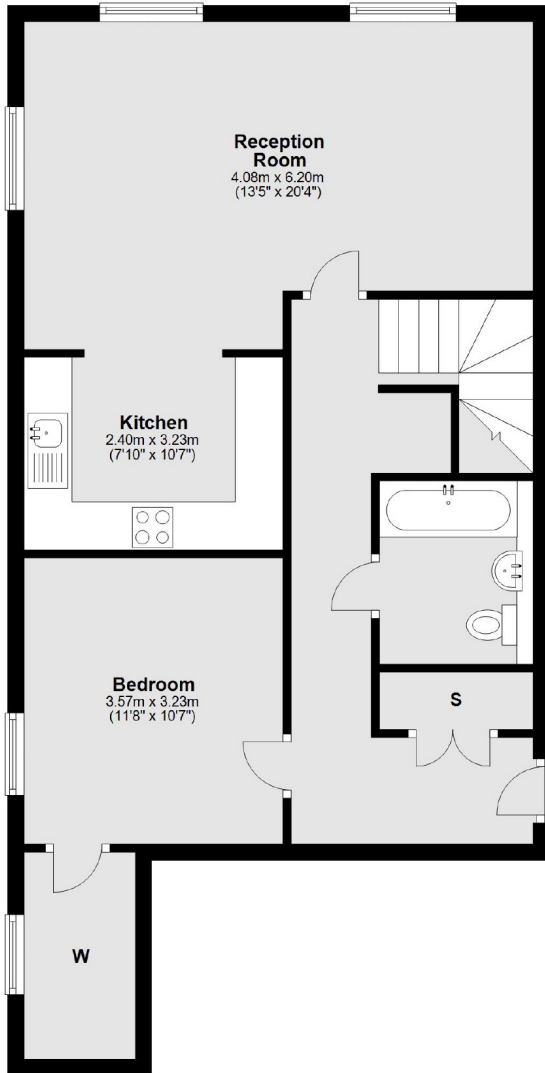
£721 Per week (£3,125 pcm)

A brand new three bedroom, top floor apartment with an open-plan kitchen/reception and a balcony with stunning views across West London.

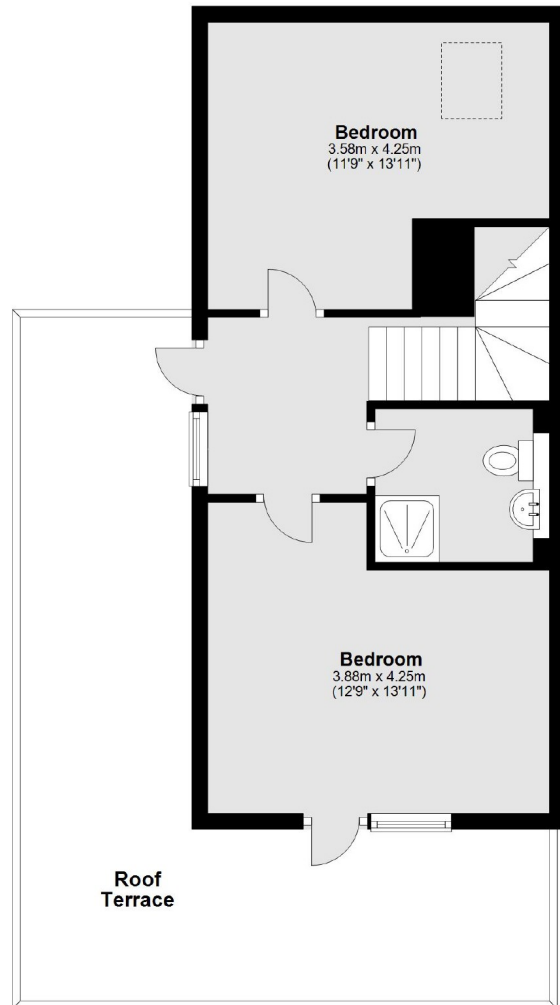
Goldleaf Apartments are close to both Goldhawk Road and Shepherds Bush stations (Underground & Overground). There are plenty of shops, cafés, restaurants and bars all within walking distance of the apartments.

- Top Floor • Balcony • Three Bedrooms • Two Bathroom • Roof Terrace • Permit Parking •

Fourth Floor



Fifth Floor



Main area: Approx. 110.6 sq. metres (1190.8 sq. feet)
Plus roof terrace, approx. 28.8 sq. metres (309.7 sq. feet)

Fletchers Brook Green Lettings
144 Shepherds Bush Road, Hammersmith, London, W6 7PB
020 7603 0603
brookgreenlettings@fletcherestates.com

Energy Rating: B. We aim to make our particulars both accurate and reliable. However they are not guaranteed; nor do they form part of an offer or contract. If you require clarification on any points then please contact us, especially if you're traveling some distance to view. Please note that appliances and heating systems have not been tested and therefore no warranties can be given as to their good working order.