

abbotFox
Bespoke.



The Nest

Trimingham, NR11

"A characterful and highly versatile home defined less by convention and more by feeling. A place where colour, texture and light have been carefully composed to create a very special environment."

Samuel Le Good | Partner







Set within open countryside with far reaching views, this characterful home unfolds laterally, a series of interconnected rooms that have evolved over time to create a plan that feels both intuitive and quietly surprising. Principal living spaces extend either side of a central hall. To one side, a generous sitting room flows seamlessly into a garden room, where broad glazing invites in soft, shifting light and frames long views across the gardens and surrounding landscape.

A separate lounge can be found on the opposite side of the hallway and offers its own distinct atmosphere, a more formal living space which allows the house to adapt easily to different rhythms of daily life.

The kitchen is conveniently positioned centrally and arranged with a long run of cabinetry, complemented by a pantry. It connects easily to the rest of the house, reinforcing its role as the functional and social core. Beyond, a secondary room currently arranged as a study introduces further flexibility, equally suited as a home office or additional bedroom if required.

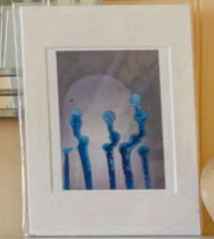
The bedroom accommodation is arranged to provide both comfort and privacy. The principal bedroom is set apart, generous in scale and accompanied by a dressing room. Two further double bedrooms are well proportioned and positioned within easy reach of the main facilities, while an additional room offers flexibility as either a fourth bedroom or further dressing room.

A family bathroom with shower and separate WC are thoughtfully arranged, ensuring practicality for both everyday living and guests.

Outside, the property is approached by a long, tree lined drive. Just under 2 acres (stms) of mature gardens have an informal, cottage-like quality. Expansive lawns are interspersed with planting beds, a greenhouse and a collection of weathered outbuildings, their patinated finishes echoing the tones of the surrounding landscape. The setting feels private and quietly immersive, with expansive views across open fields and a strong connection to nature.









Floorplan
 Approx 177 sq m / 1907 sq ft

This floorplan is only for illustrative purposes and is not to scale. Measurements of rooms, doors, windows, and any items are approximate and no responsibility is taken for any error, omission or mis-statement. Icons of items such as bathroom suites are representations only and may not look like the real items. Made with Made Snappy 360.



Location

The property enjoys a peaceful rural setting in Trimingham, on the North Norfolk coast, with the coastal path just moments away. From the doorstep, miles of scenic walking unfold along dramatic clifftops and open countryside, with far-reaching views across both land and sea. The surrounding landscape is characterised by big skies, open fields and a sense of calm that feels increasingly rare.

Despite its sense of seclusion, the house remains within easy reach of nearby villages and coastal towns. Cromer lies a short drive away, offering a range of independent shops, cafés and restaurants, along with essential amenities and rail connections. The wider North Norfolk coastline is easily explored, with its celebrated beaches, nature reserves and charming market towns.

The area is particularly well suited to those seeking an outdoor lifestyle, with walking, cycling and coastal exploration all readily accessible, making this a quietly exceptional setting from which to enjoy both countryside and coast.









Our Agent's View

"This is a home that prioritises feeling over formality. Designed in a way that creates interest at every turn, with spaces that flow naturally yet remain distinct.

It is a home that invites you to slow down, settle in and make it your own whether as a permanent home or a place to escape to by the coast."

Samuel Le Good | Partner



abbot**Fox**
Bespoke.



Agent's Details



Samuel Le Good | Partner

samuellegood@abbotfox.co.uk | 01603 660000 | 07915 660981 | @samuellegood

Kingsley House
2a Upper King Street
Norwich
NR3 1AH



Disclaimer - In accordance with the Property Mis-descriptions Act, the company gives notice that all descriptions, references to condition, necessary permissions for use and other details are given in good faith and believed to be correct, but any intending lessees do not rely on them statements of fact, but must satisfy themselves by inspection or other means, as to their accuracy