



CAVENDISH GARDENS, SW4

£995,000

- Mansion flat
- Three bedrooms
- Two bathrooms
- Private terrace
- Share Of Freehold
- Chain free





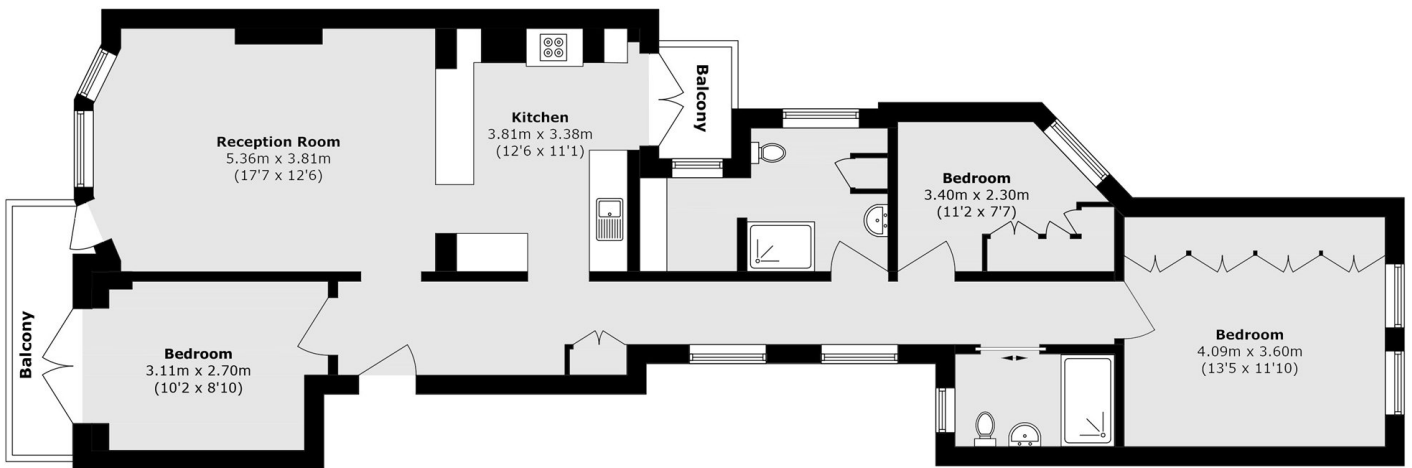
ABOUT THE HOME

****Offers In Excess Of**** Renovated to a high standard throughout, this spacious mansion flat extends close to 1000 sq ft and offers a superb mix of modern and period features. The accommodation comprises an open plan living/kitchen area to the front with terraces front and back, a principal bedroom located at the rear of the property overlooking communal gardens, two further bedrooms (one currently in use as a home office) and two modern bathrooms.

Located on Trouville Road, Cavendish Gardens sits within the sought after enclave of Abbeville Village. Within walking distance of Clapham Common, Clapham South (Northern line) Underground (0.5 mile) serves the City and West End, along with numerous regular bus services. The shops, restaurants and recreational amenities of Clapham Old Town and High Street are also within reach.







Total area (approx.): 92.7 sq. m (997.8 sq. ft)

Balcony area (approx.): 5.8 sq. m (62.4 sq. ft)

JACKSONS CLAPHAM

73 Abbeville Road, London,
SW4 9JN

Sales: 020 8487 3177

Lettings: 020 8487 3178

Energy Rating: C We aim to make our particulars both accurate and reliable. However they are not guaranteed; nor do they form part of an offer or contract. If you require clarification on any points then please contact us, especially if you're traveling some distance to view. Please note that appliances and heating systems have not been tested and therefore no warranties can be given as to their good working order.