



HIGH STREET SUTTON, SM1

£1,350 per month

Light and spacious
Rear entrance via quiet residential street
No parking available
Close to local amenities
Good transport connections



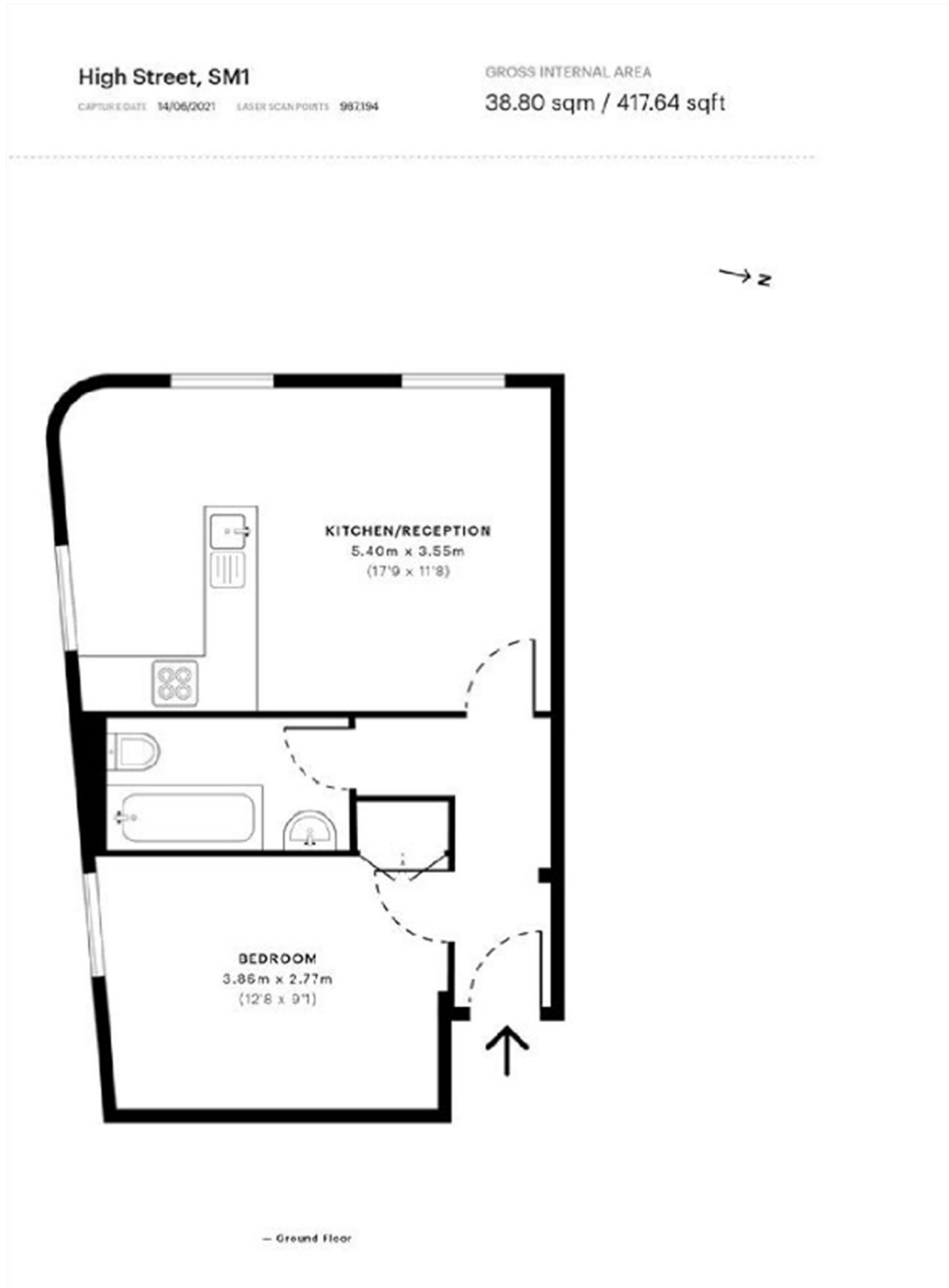
ABOUT THE PROPERTY

A bright and spacious one-bedroom flat ideally located just off Sutton High Street. Accessed via a private rear entrance on a quiet residential street, the property offers well-proportioned accommodation while being within easy reach of local amenities and excellent transport links.

Situated in a highly convenient central Sutton location, the property is within easy walking distance of Sutton town centre, with its extensive shopping facilities, restaurants, cafes and transport connections, including Sutton Station providing services into Central London.



STEP INSIDE HIGH STREET SUTTON



Tooting
020 8772 9210

Energy Rating: We aim to make our particulars both accurate and reliable. However, they are not guaranteed; nor do they form part of an offer or contract. If you require clarification on any points then please contact us, especially if you're traveling some distance to view. Please note that appliances and heating systems have not been tested and therefore no warranties can be given as to their good working order

**MARSH &
PARSONS**