



, Princes Court,  
88 Brompton Road, SW3

Asking Price £1,100,000, Leasehold

NAPIER WATT

T: 0207 935 0011  
E: [enquiries@napierwatt.co.uk](mailto:enquiries@napierwatt.co.uk)  
W: [napierwatt.co.uk](http://napierwatt.co.uk)

35 Berkeley Square, Mayfair, London, W1J 5BF











## Description

This sensational apartment is situated on the fourth floor (with lift) of a popular portered building and offers views over Brompton Road and across to the iconic Harrods Building. The property comprises of a spacious reception room, benefiting from large windows that allows for plenty of natural light and a dining area to the side. The master bedroom is en-suite with built in storage and there is one further double bedroom with shower room. There is a fully fitted Scavolini kitchen incorporating Miele and Siemens appliances. The inventory includes Busado furniture and the property also benefits from Air conditioning with latest technology VRV by Mitsubishi. Princes Court is a fully portered block with CCTV security, block heating and constant hot water. Situated on Brompton Road, Hyde Park and exclusive shopping on Sloane Street are both easily accessible on foot.

## Key Features

- 24 HOUR PORTERAGE
- CENTRAL KNIGHTSBRIDGE
- LIFTS
- AIR CONDITIONING

## Terms

## 25 Princes Court, Brompton Road, SW3

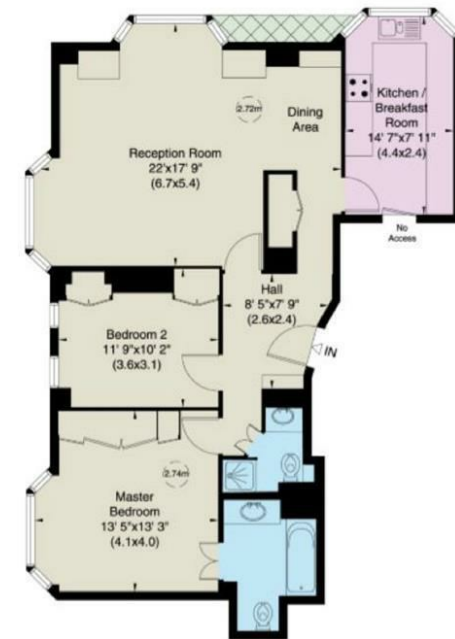
Gross internal area (approx.)

87 Sq m (933 Sq ft)

For identification only, Not to Scale



Floor Plan by **capital group** 020 8671 7722



Fourth Floor

IMPORTANT: We would inform prospective purchasers that these sales particulars have been prepared as a general guide only. A detailed survey has not been carried out, nor the services, appliances and fittings tested. Room sizes should not be relied upon for furnishing purposes and are approximate. If floor plans are included, they are for guidance only and illustration purposes only and may not be to scale. If there are any important matters likely to affect your decision to buy, please contact us before viewing the property.