



**DEPOSIT FREE
OPTION AVAILABLE***

Willows Park, Accrington, BB5

£1,245 PCM

Discover Willows Park, a new development of 2 and 3 bedroom homes in the charming town of Accrington, Lancashire.

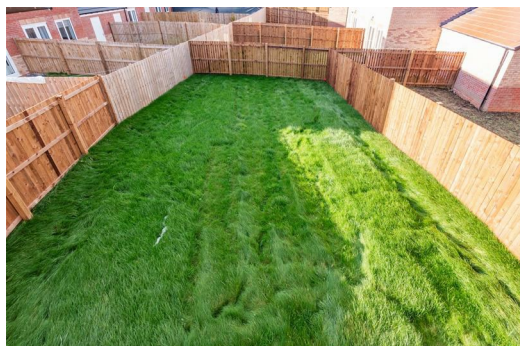
Meet The Kildare, a three-bedroom detached home that embodies beauty, comfort, and modernity. Discover the remarkable features and thoughtful design that make this property truly captivating.

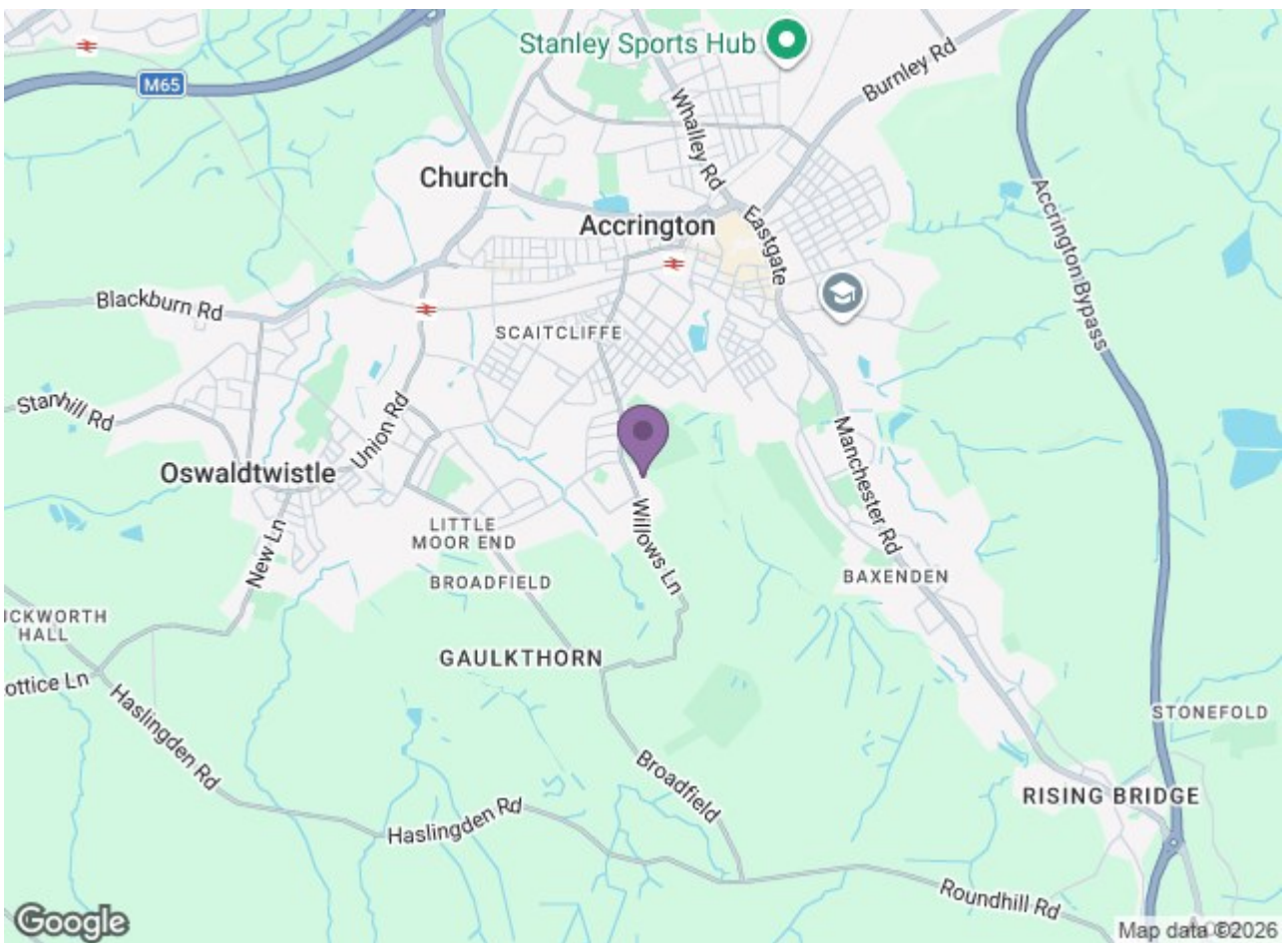
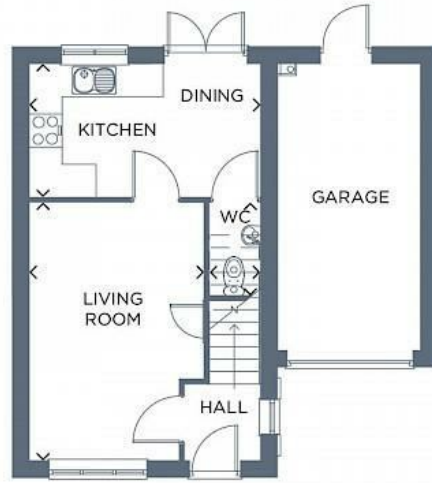
Step inside and be greeted by a spacious living room, that provides a welcoming and versatile space for relaxation and entertainment. The contemporary kitchen diner awaits, offering a perfect blend of style and functionality. The under-stairs WC adds convenience to your daily routines, while the French doors from the dining area provide an abundance of natural lighting, connecting the interior with the exterior of the home effortlessly.

Moving up to the next floor, a master bedroom awaits, boasting luxury and tranquility. Indulge in the opulence of the en-suite bathroom, providing a private oasis. Two additional good-sized bedrooms offer ample space for family members, guests or a home office, ensuring everyone's comfort. A well-appointed family bathroom completes this level, catering to your everyday needs.

Completing this home perfectly is an integral garage, providing secure parking and additional storage options.

Nestled in a semi-rural setting with breathtaking countryside views, this development boasts the perfect balance of tranquility and convenience.





| Energy Efficiency Rating | | Environmental Impact (CO ₂) Rating | |
|--------------------------|-----------|--|-----------|
| Current | Potential | Current | Potential |
| 83 | 85 | D | C |
| | | | |

England & Wales

Ascend
Built on higher standards