



Connells

Junction Mews
Burgess Hill



Property Description

Situated in Junction Mews is this three bedroom home benefitting from being in a quiet cul-de-sac, within walking distance to Burgess Hill town centre and main line station as well as Wivelsfield station, both offering excellent links to London, Gatwick Airport and the South Coast. There is also a Co-op within walking distance. Burgess Hill town centre offers a wide selection of restaurants, bars, shops and a cinema and easy access to the South Downs national park.



Key Features

- Semi-Detached House
- Three Bedrooms
- En-suite to Master
- Ground Floor WC
- Open Plan Kitchen/Dining Room
- Separate Living Room
- Rear Garden
- Well Presented Throughout

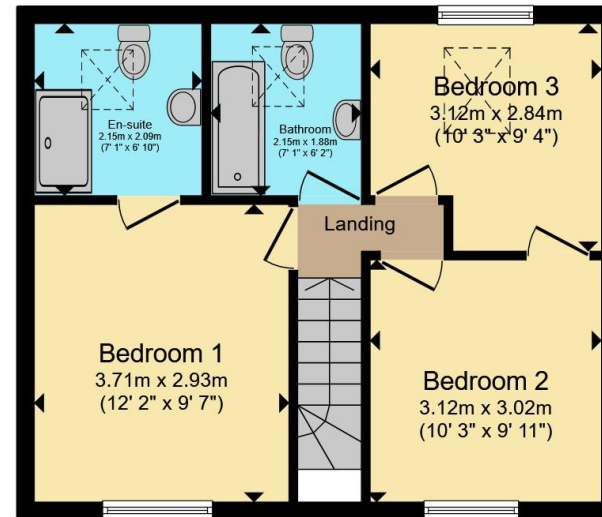








Ground Floor



First Floor

Total floor area 85.9 m² (925 sq.ft.) approx

This floor plan is for illustrative purposes only. It is not drawn to scale. Any measurements, floor areas (including any total floor area), openings and orientation are approximate. No details are guaranteed, they cannot be relied upon for any purpose and they do not form part of any agreement. No liability is taken for any error, omission or misstatement. A party must rely upon its own inspection(s). Powered by www.propertybox.io



To view this property please contact Connells on

T 01444 241 626
E burgesshill@connells.co.uk

21 Church Road
 BURGESS HILL RH15 9BB

EPC Rating: C Council Tax
 Band: D

Tenure: Freehold

view this property online connells.co.uk/Property/BGH406043



1. MONEY LAUNDERING REGULATIONS Intending purchasers will be asked to produce identification documentation at a later stage and we would ask for your co-operation in order that there will be no delay in agreeing the sale. 2. These particulars do not constitute part or all of an offer or contract. 3. The measurements indicated are supplied for guidance only and as such must be considered incorrect. Potential buyers are advised to recheck measurements before committing to any expense. 4. We have not tested any apparatus, equipment, fixtures, fittings or services and it is in the buyers interest to check the working condition of any appliances.

Connells Residential is registered in England and Wales under company number 1489613, Registered Office is Cumbria House, 16-20 Hockliffe Street, Leighton Buzzard, Bedfordshire, LU7 1GN. VAT Registration Number is 500 2481 05.

See all our properties at www.connells.co.uk | www.rightmove.co.uk | www.zoopla.co.uk

Property Ref: BGH406043 - 0002