

Park Lane

Your Local Estate Agent

Residential & Commercial Property



35 Westminster Road

Ellesmere Park, Eccles, Manchester, M30 9EA

AVAILABLE NOW Park Lane Estate Agents are delighted to offer To Let this breathtaking four-bedroom detached house on Westminster Road, an exclusive and highly sought-after road in Ellesmere Park. The property has been meticulously and thoughtfully upgraded throughout, whilst retaining and emphasising traditional characteristics. The property is uPVC double-glazed throughout and warmed by gas central heating. The property is perfectly positioned for easy access to a wealth of amenities including, schools, transport links, playing fields, shops, restaurants and bars. The internal accommodation comprises entrance hallway, front lounge, downstairs w.c, rear lounge, kitchen diner, cloakroom, downstairs bathroom, laundry room, stairs to the first floor landing, master bedroom, second bedroom, third bedroom, fourth bedroom and family bathroom. Externally to the front, the property boasts a large and gated two-drive garden with a lawned centre and mature borders. To the rear of the property is an equally impressive rear garden, which is mostly lawned with mature borders for privacy. This property simply has to be viewed to be appreciated, contact us now to arrange your viewing!

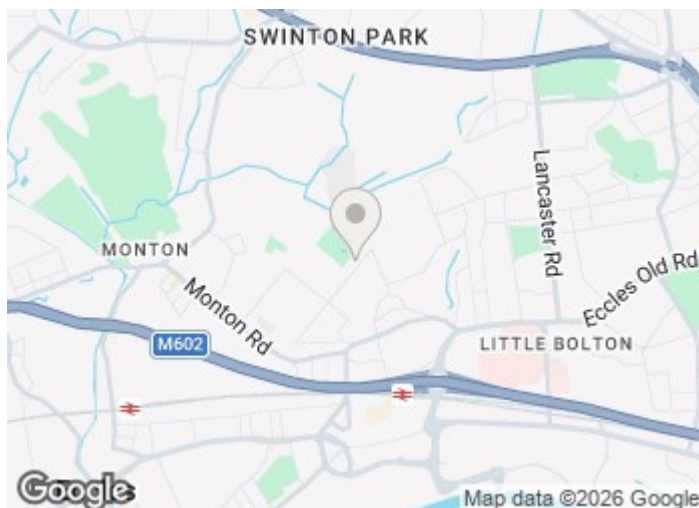
£4,000 Per Month

35 Westminster Road

Ellesmere Park, Eccles, Manchester, M30 9EA



- PREMIUM FOUR BEDROOM DETACHED HOUSE
- LARGE REAR GARDEN
- CLOSE TO A WEALTH OF AMENITIES
- HIGH-STANDARD PRESENTATION THROUGHOUT
- TWO BATHROOMS & ONE W.C
- CONTACT US NOW TO ARRANGE YOUR VIEWING
- OFF ROAD PARKING FOR SEVERAL CARS
- STUNNING KITCHEN DINER WITH INTEGRATED APPLIANCES

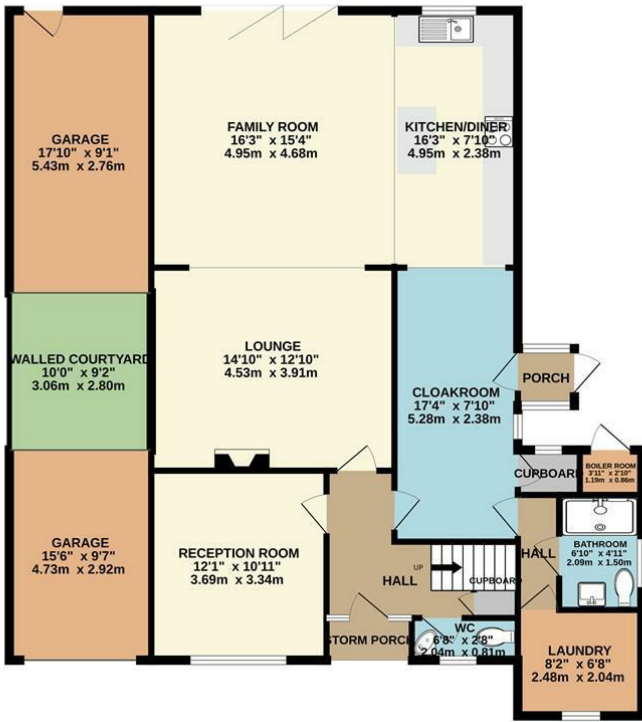


[Directions](#)

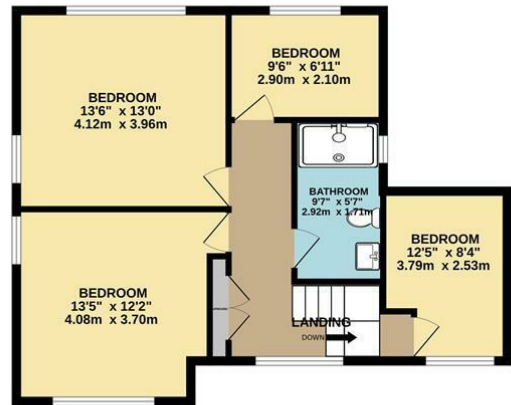


Floor Plan

GROUND FLOOR
1370 sq.ft. (127.3 sq.m.) approx.



1ST FLOOR
625 sq.ft. (58.0 sq.m.) approx.



FOUR BEDROOM DETACHED HOUSE

TOTAL FLOOR AREA : 1995 sq.ft. (185.3 sq.m.) approx.

Whilst every attempt has been made to ensure the accuracy of the floorplan contained here, measurements of doors, windows, rooms and any other items are approximate and no responsibility is taken for any error, omission or mis-statement. This plan is for illustrative purposes only and should be used as such by any prospective purchaser. The services, systems and appliances shown have not been tested and no guarantee as to their operability or efficiency can be given.
Made with Metropix ©2026

These particulars, whilst believed to be accurate are set out as a general outline only for guidance and do not constitute any part of an offer or contract. Intending purchasers should not rely on them as statements of representation of fact, but must satisfy themselves by inspection or otherwise as to their accuracy. No person in this firm's employment has the authority to make or give any representation or warranty in respect of the property.

