



Elmira Street, SE13

£2,200 Per calendar month

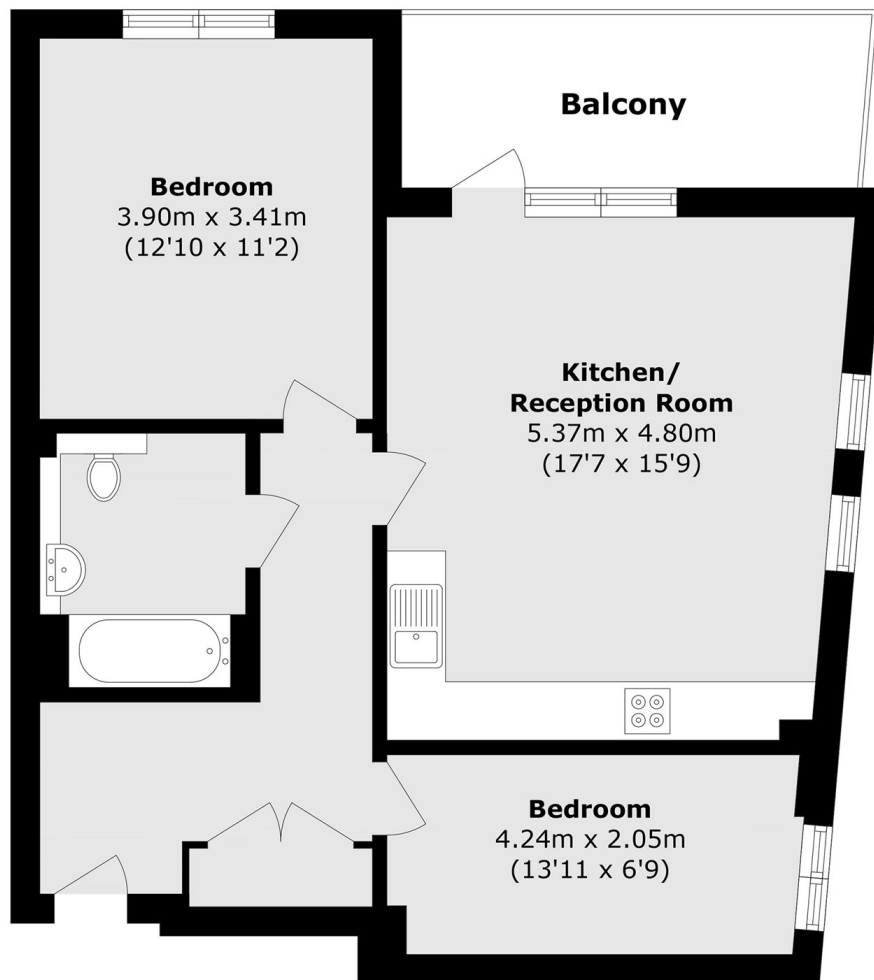
A luxury two bedroom apartment located in this impressive development comprising two large double bedrooms, open plan kitchen / reception, a modern bathroom and a private balcony. The property also boasts an underground off-street parking space and a communal roof terrace.

The property is located moments from Lewisham mainline and DLR stations with travel time taking nine minutes into London Bridge and fifteen minutes into Canary Wharf. A wide range of amenities can be found in the centre of Lewisham.

Features

- Two Double Bedrooms
- Open Plan Kitchen/Reception
- Private Balcony
- Off-Street Parking
- 24 Hour Concierge
- Close To Transport Links

Elmira Street,
London, SE13



Total area (approx.): 64.6 sq. m (695.3 sq. ft)

Balcony area (approx.): 6.8 sq. m (73.1 sq. ft)