



Guide Price
£100,000

Leasehold

1x  1x  1x 

**Homepeak House,
Bartholomew Street,
Hythe, Kent, CT21**

OVER 60?

Secure this property
for up to **59% less!**

Wards
Helping you move forwards



Main features

- No onward chain
- First floor apartment with stunning views over town and sea glimpses
- Modern fitted shower room, re-fitted kitchen
- Bright and airy as it is on the sunny side of the building
- Communal lounge with kitchen for social events

Accommodation

FIRST FLOOR

Entrance Hall

Lounge: 17'8 x 10'6 (5.39m x 3.20m)

Kitchen: 7'1 x 5'3 (2.16m x 1.60m)

Bedroom: 12'2 x 8'8 (3.71m x 2.64m)

Shower Room: 6'8 x 5'5 (2.03m x 1.65m)

OUTSIDE

Resident's communal Car Park

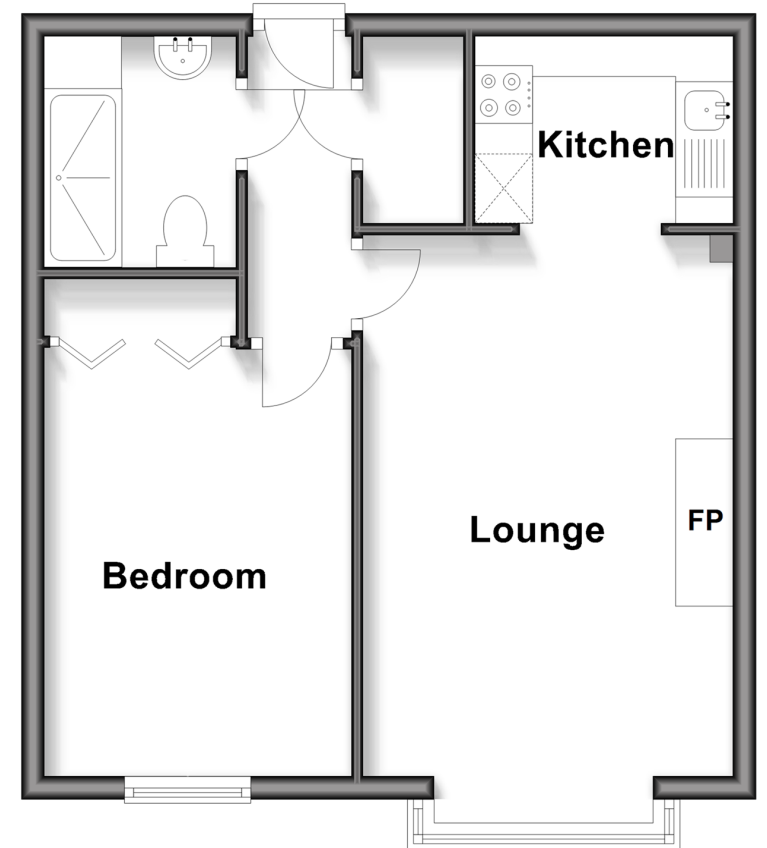
Communal Gardens

Call Hythe - 01303 267473 ■ wardsof Kent.co.uk

- Legal advice should be taken to verify fixtures/fittings, planning, alterations and/or lease details
- Appliances & services are untested, dimensions are approximate and floor plans are not to scale
- Through a Homewise Home For Life Plan people aged 60+ can secure this property for up to 59% less, by purchasing a Lifetime Lease

First Floor

Approx. 38.9 sq. metres (418.3 sq. feet)



12825238/20260225/OH/MIB