



23 Lowfield Gardens, Glazebury

Offers Over £260,000

Miller Metcalfe
Every step of the way

23 Lowfield Gardens

Glazebury, Warrington

Are you a first-time buyer or searching for a charming, move-in-ready home in a highly sought-after location? This beautifully maintained two-bedroom property offers modern upgrades throughout, including a brand-new bathroom, fitted wardrobes in both bedrooms, and new flooring across the home.

Tucked away in a quiet cul-de-sac, the property enjoys a peaceful and friendly setting while remaining conveniently close to local schools, shops, restaurants, and leisure facilities, making everyday living both easy and enjoyable.

Step inside to discover a warm and welcoming interior. The bright and spacious lounge provides the perfect place to relax, with large windows allowing plenty of natural light to flood the room. To the rear, the extended kitchen/diner offers an excellent space for family meals and entertaining, featuring modern appliances, generous work surfaces, and ample storage.

The property benefits from two well-proportioned bedrooms, both complete with fitted wardrobes and tasteful décor, allowing you to move straight in with minimal effort. The stylish new bathroom is fitted with a walk-in shower, WC, and wash basin.

Externally, the home boasts a low-maintenance rear garden that is not overlooked, providing a private outdoor space to enjoy. A driveway to the front offers convenient off-road parking.

This fantastic home is ideal for first-time buyers, downsizers, or anyone looking for a well-presented property in a desirable location.

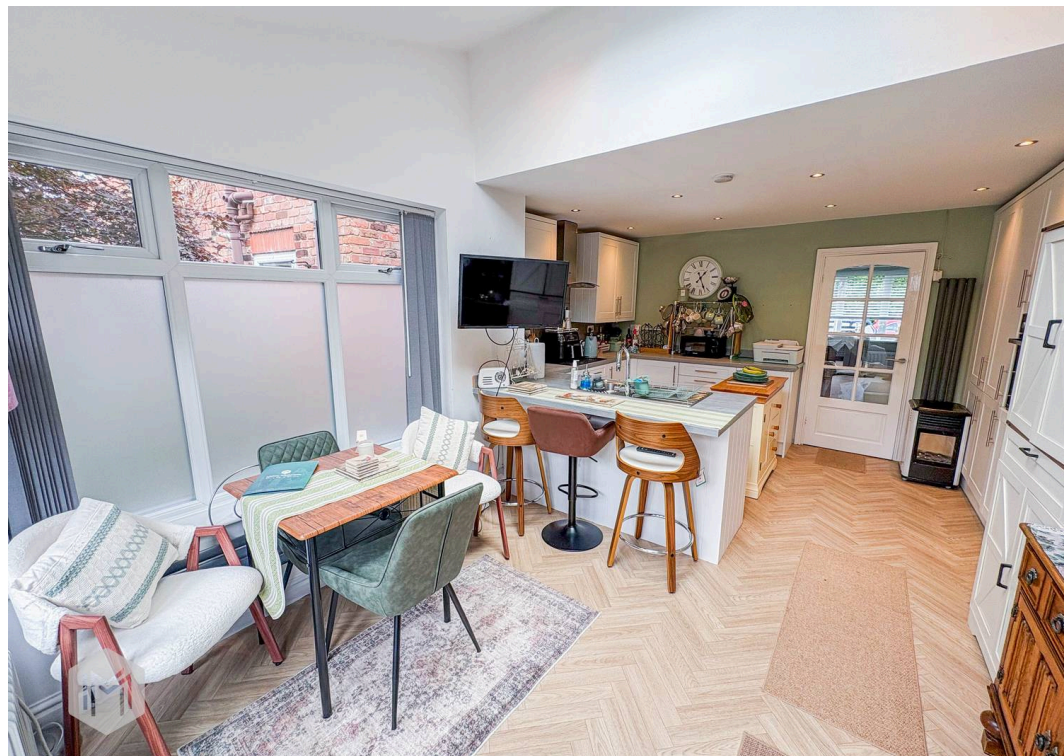
Council Tax band: B

Tenure: Leasehold

EPC Energy Efficiency Rating: C

EPC Environmental Impact Rating: C





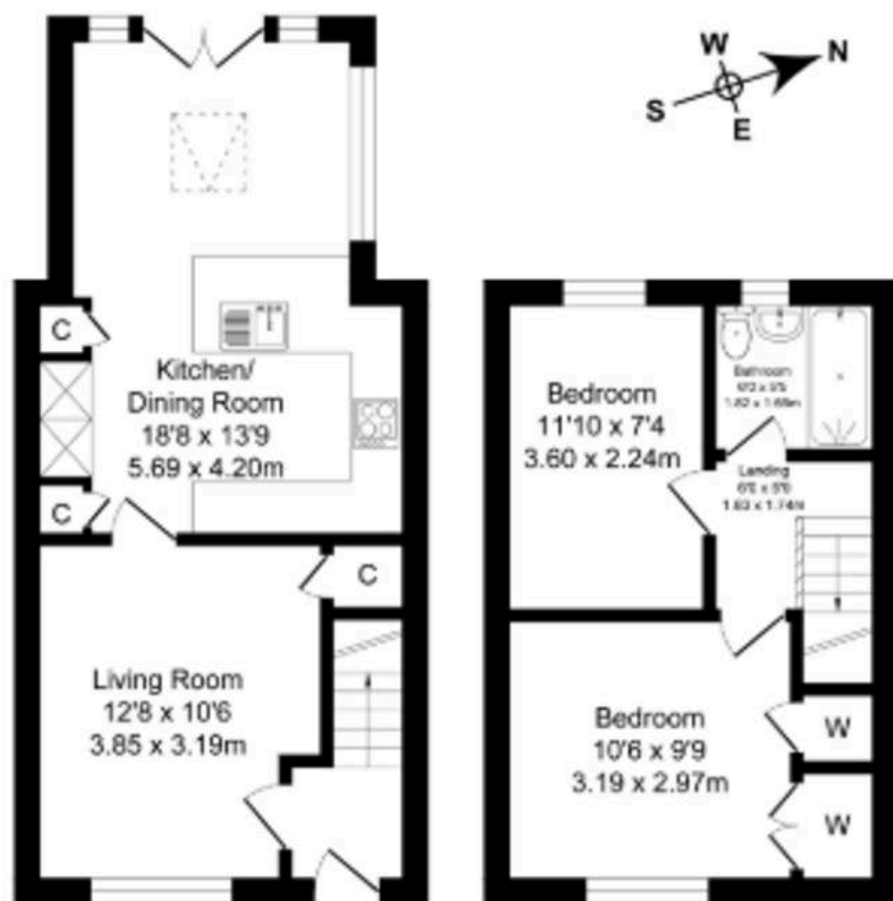




Lowfield Gardens

Total Approx. Floor Area 704 Sq.ft. (65.4 Sq.M.)

Surveyed and drawn by Lens Media for illustrative purposes only. Not to scale. Whilst every attempt was made to ensure the accuracy of the floor plan, all measurements are approximate and no responsibility is taken for any error.



Ground Floor
Approx. Floor
Area 405 Sq.Ft
(37.6 Sq.M.)

First Floor
Approx. Floor
Area 299 Sq.Ft
(27.8 Sq.M.)



Miller Metcalfe - Culcheth

Miller Metcalfe, 441 Warrington Road - WA3 5SJ

01925 762083 • culcheth@millermetcalfe.co.uk • millermetcalfe.co.uk/

Miller Metcalfe
Every step of the way