



QUEEN'S GATE GARDENS SOUTH KENSINGTON
£8,450 PER MONTH AVAILABLE 15/06/2026




Hamptons

THE HOME EXPERTS

{ THE PARTICULARS

Queen's Gate Gardens South
Kensington SW7

£8,450 Per Month
Furnished

 3 Bedrooms
 3 Bathrooms
 1 Reception

Features

- SHORT LET, - 3 Bedrooms, - 3
Bathrooms, - Large Reception Room, -
Private Garden, - Own Entrance, - Key to
the Private Garden Square, - Furnished

Council Tax

Council Tax Band G

Hamptons
8 Hornton Street
Kensington, London, W8 4NW
020 7937 9372
KensingtonLettings@hamptons.co.uk
www.hamptons.co.uk

{ A SPACIOUS THREE BEDROOM FLAT ON A GARDEN SQUARE

The Property

SHORT LET A very well presented and spacious three bedroomed apartment in the beautiful Queen's Gate Gardens in the heart of South Kensington. The apartment comprises a large living-room with a grand piano, separate dining area, library and bar area and doors that lead to the private garden, a separate fully equipped kitchen, three double bedrooms and three bathrooms. The property further benefits from a key to the private square garden. Offered Furnished. **Check for availability dates**

Location

The apartment is very well placed for the shops, restaurants and public transport facilities of South Kensington and Gloucester road as well as offering access to the open spaces of Kensington Gardens/Hyde Park to the north. A number of world class museums, including the Natural History Museum, the Science Museum and the Victoria and Albert Museum are within close proximity.



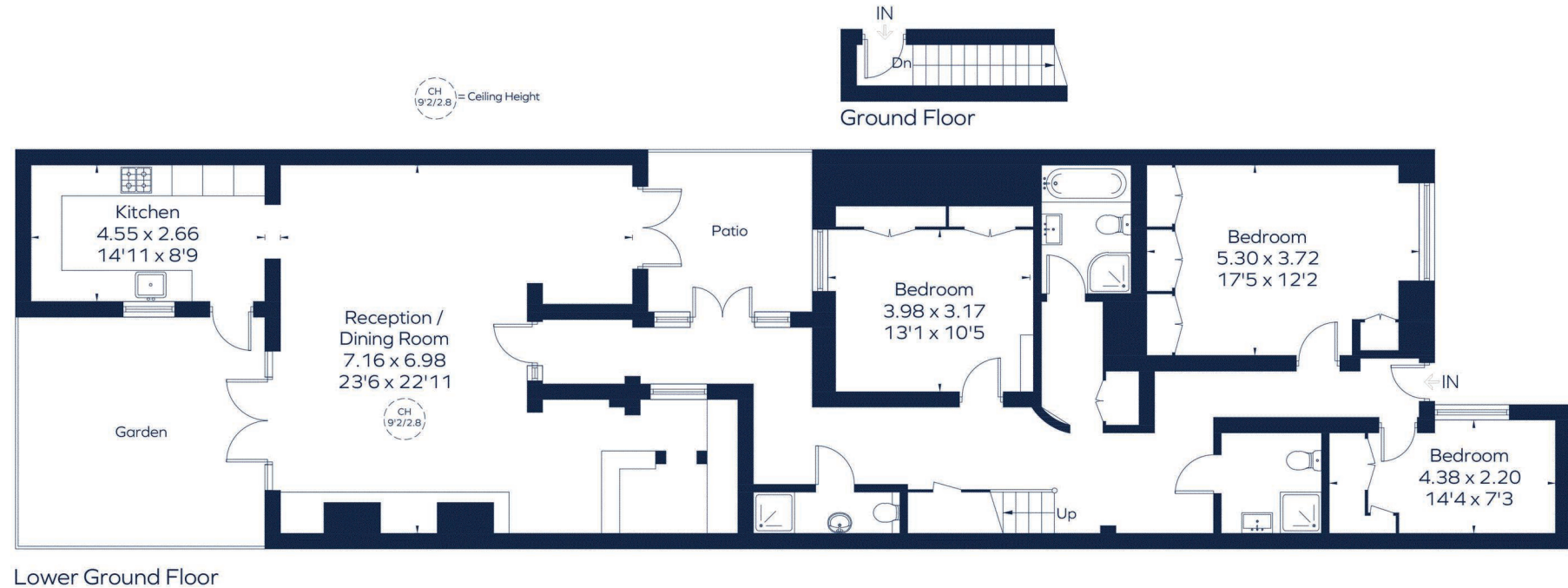
QUEENS GATE GARDENS

Approximate Gross Internal Area

Lower Ground floor = 1750 sq. ft. (162.6 sq. m.)

Ground floor = 35 sq. ft. (3.3 sq. m.)

Total = 1785 sq. ft. (165.9 sq. m.)



Drawn for illustration and identification purposes only.
ID 1276880

For Clarification

We wish to inform prospective tenants that we have prepared these particulars as a general guide and they have been confirmed as accurate by the landlord. We have not verified permissions, nor carried out a survey, tested the services, appliances and specific fittings. Room sizes are approximate and measurement figures rounded: they are taken between internal wall surfaces and therefore include cupboards/shelves, etc. Accordingly, they should not be relied upon for

carpets and furnishings. It should also be noted that all fixtures and fittings, carpeted, curtains/blinds, kitchen equipment and garden statuary, whether fitted or not, are deemed removable by the landlord unless specifically itemised with these particulars. Please enquire in office or on our website for details on holding deposit and tenancy deposit figures.

