



hamlyn
smith.


Wilbury Gardens, Hove, BN3 6HY

GUIDE PRICE
£400,000 - £425,000

hamlyn smith.

 2 Bedrooms

 1 Reception

 1 Bathroom

OFFERS OVER £390,000 | Nestled in the charming area of Wilbury Gardens, Hove, this delightful apartment offers a perfect blend of comfort and convenience. With two well-proportioned bedrooms, this property is ideal for small families, couples, or individuals seeking a peaceful retreat. The spacious reception room provides a welcoming atmosphere, perfect for relaxation or entertaining guests.



- Top floor flat with balcony
- Two double bedrooms
- Private garden included
- Share of freehold
- Sea views from balcony
- Quiet, tree-lined road
- Close to Hove Park amenities
- Near Hove station for commuters





hamlyn smith.

📍 50 Goldstone Villas, Hove, BN3 3RS

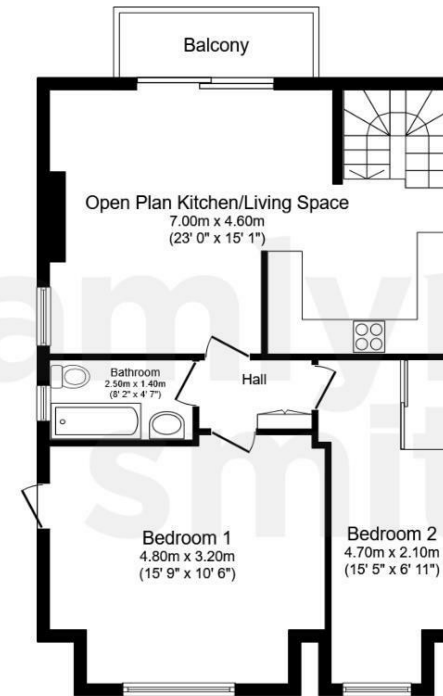
☎ 01273 762222

✉ hello@hamlynsmith.co.uk

The apartment features a modern bathroom, ensuring that your daily routines are both comfortable and efficient. The layout is thoughtfully designed, making the most of the available space while allowing for natural light to fill the rooms, creating a warm and inviting environment.

Wilbury Gardens is a sought-after location, known for its friendly community and proximity to local amenities. Residents can enjoy easy access to a variety of shops, cafes, and parks, making it an ideal spot for those who appreciate a vibrant lifestyle. Additionally, families will be pleased to know that reputable schools such as Cardinal Newman and Cottesmore are within reach, providing excellent educational opportunities for children.

This apartment not only offers a lovely living space but also the chance to be part of a thriving neighbourhood. This property presents a wonderful opportunity to enjoy all that Hove has to offer. Don't miss the chance to make this charming apartment your new home.



Floor Plan

Floor area 63.0 sq.m. (678 sq.ft.)

Total floor area: 63.0 sq.m. (678 sq.ft.)

This floor plan is for illustrative purposes only. It is not drawn to scale. Any measurements, floor areas (including any total floor area), openings and orientations are approximate. No details are guaranteed, they cannot be relied upon for any purpose and do not form any part of any agreement. No liability is taken for any error, omission or misstatement. A party must rely upon its own inspection(s). Powered by www.Propertybox.io

