



Price

£120,000

Leasehold

1x  1x  1x 

**Glebe Lane,
Sittingbourne, Kent,
ME10**

OVER 60?

Secure this property
for up to **59% less!**

Wards
Helping you move forwards



Main features

- First floor flat with bright and welcoming lounge/diner
- Allocated parking space; easy access and peace of mind
- Great views from the lounge/diner and bedroom
- Useful study
- No onward chain

Accommodation

FIRST FLOOR

Hallway

Bedroom: 13'2 x 9'2 (4.02m x 2.80m)

Lounge/Diner: 13'2 x 12'3 (4.02m x 3.74m)

Kitchen: 9'9 x 8'1 (2.97m x 2.47m)

Study/Office: 6'1 x 4'9 (1.86m x 1.45m)

Wet Room

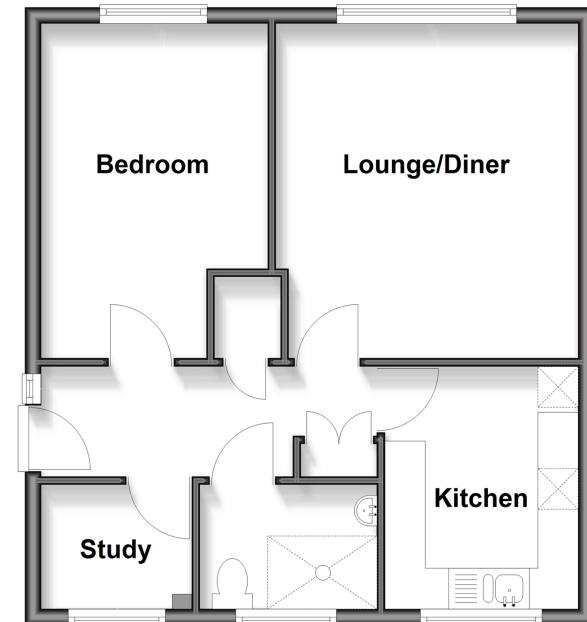
OUTSIDE

Allocated Parking

Communal Rear Courtyard

First Floor

Approx. 47.9 sq. metres (515.9 sq. feet)



Call Sittingbourne - 01795 427272 ■ wardsof Kent.co.uk

- Legal advice should be taken to verify fixtures/fittings, planning, alterations and/or lease details
- Appliances & services are untested, dimensions are approximate and floor plans are not to scale
- Through a Homewise Home For Life Plan people aged 60+ can secure this property for up to 59% less, by purchasing a Lifetime Lease



11738997/20260214/JS/CK