



Price
£400,000

Freehold

2x  1x  1x 

**Taynton Drive,
Merstham, Redhill,
Surrey, RH1**

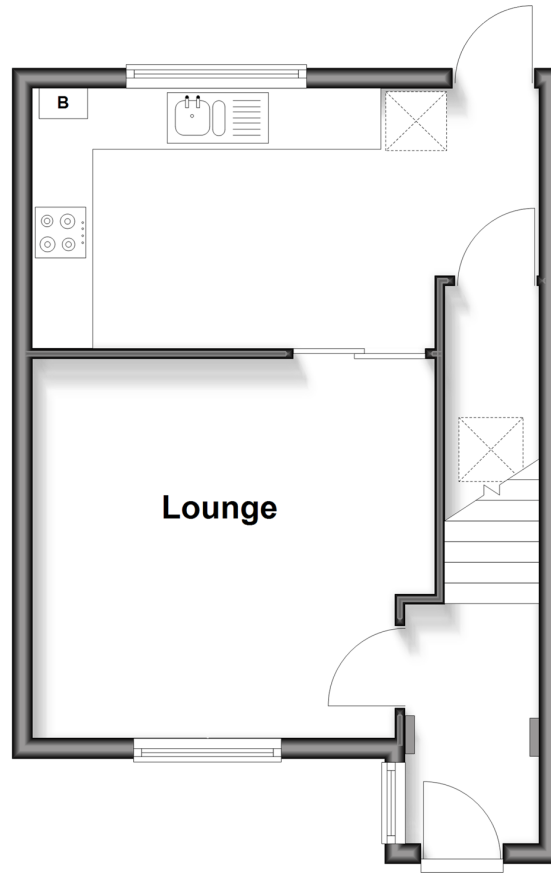
OVER 60?

Secure this property
for up to **59% less!**

cubitt & west
Helping you move forwards

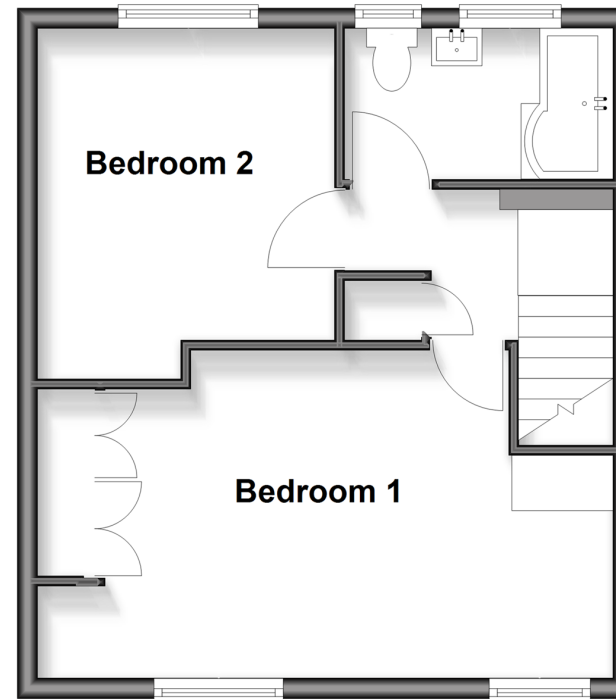
Ground Floor

Approx. 33.4 sq. metres (359.9 sq. feet)



First Floor

Approx. 36.4 sq. metres (392.0 sq. feet)



Accommodation

GROUND FLOOR

Entrance Hall

Lounge: 13'0 x 12'3 (3.97m x 3.74m)

Kitchen/Dining Area: 16'5 x 8'5 (5.01m x 2.57m)

FIRST FLOOR

Landing

Bedroom 1: 18'7 x 10'7 (5.67m x 3.23m)

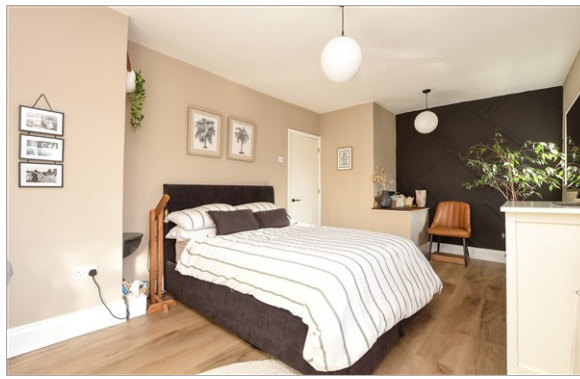
Bedroom 2: 11'6 x 9'7 (3.51m x 2.92m)

Bathroom: 8'5 x 5'3 (2.57m x 1.60m)

OUTSIDE

Driveway

Rear Garden



Main features

- Stunning and well-presented mid-terraced house
- Enlarged living area creating an inviting, spacious feel
- Separate fitted kitchen with dining area and ample storage
- Modernised bathroom with a luxury hotel feel and high quality fittings
- Generous sized main bedroom with fitted wardrobe, panelling, and potential to reconfigure

Nearest Schools

Primary Schools: Furzeffield Primary 0.6 miles, Lime Tree Primary 0.6 miles, Merstham Primary 1.0 miles
Secondary Schools: Merstham Park School 0.1 miles, Woodfield School 0.1 miles, Carrington School 2.8 miles

Transport Information

Train Stations: Merstham 1.0 miles, Redhill 2.8 miles, Reigate 2.9 miles

Address

Taynton Drive, Merstham, Redhill, Surrey, RH1

Directions

For directions to this property please contact us.



cubitt&west
Helping you move forwards

Call Redhill Branch 01737 778866 ■ cubittandwest.co.uk



- Legal advice should be taken to verify fixtures/fittings, planning, alterations and/or lease details
- Appliances & services are untested, dimensions are approximate and floor plans are not to scale
- Through a Homewise Home For Life Plan people aged 60+ can secure this property for up to 59% less, by purchasing a Lifetime Lease



EPC RATING
CURRENT: C(70) POTENTIAL: B(88)

23411715/20260214/AB/JB2