



15 Glen View Road, Onchan, Isle Of Man, IM3 4HL
Asking Price £389,950



- **Spacious 3-bedroom, 2-bathroom dormer bungalow in a peaceful residential location**
- **Generous driveway leading to an attached garage, plus front and rear lawned gardens**
- **Large open-plan reception room with adjoining sunroom, ideal for relaxed living**
- **Outdoor entertaining space including a BBQ pit, decked area, and greenhouse**
- **Well-appointed breakfast kitchen (not suitable for dining) with ample storage**



15 Glen View Road, Onchan, Isle Of Man, IM3 4HL

Nestled in a peaceful and well-established residential setting, this charming three-bedroom, two-bathroom dormer bungalow offers the perfect blend of comfort, space, and versatility—ideal for families, downsizers, or those seeking a relaxed lifestyle with a touch of countryside appeal. The property is beautifully presented with well-maintained front and rear lawned gardens, offering both privacy and practicality in equal measure.

Upon entering, you are welcomed into a bright and spacious open-plan reception room that serves as the heart of the home. Bathed in natural light, this expansive area seamlessly connects to a delightful sunroom positioned to the side—perfect for enjoying a quiet coffee, reading nook, or as an additional lounge space. The layout promotes a fluid and flexible living environment, ideal for entertaining or relaxed family living.

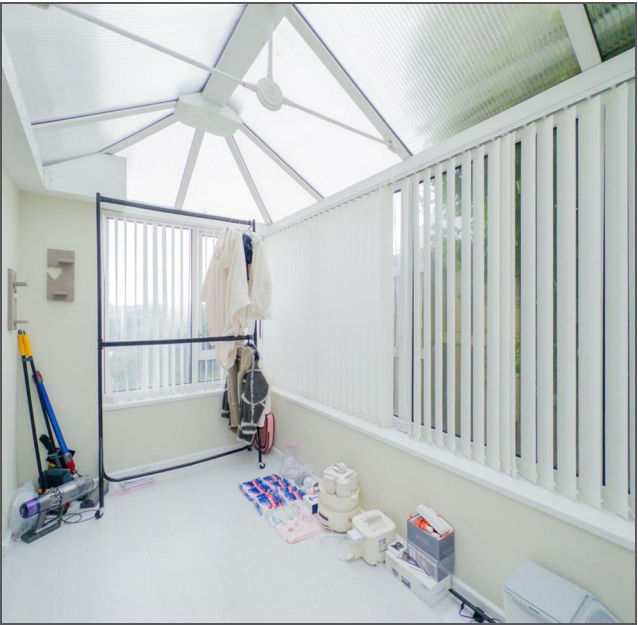
The kitchen, positioned just off the main living space, is well-appointed with ample storage and preparation surfaces, making it highly functional for everyday use.

Accommodation is thoughtfully arranged with two well-sized bedrooms and a modern family bathroom on the ground floor. Upstairs, the principal bedroom benefits from its own private en-suite shower room, offering a peaceful retreat with elevated views of the surrounding gardens.

Externally, the home continues to impress. A large driveway provides ample off-road parking and leads to an attached garage, perfect for additional storage or workshop use. The rear garden is a standout feature, with a BBQ pit and decked area ideal for entertaining in the warmer months. A greenhouse is also included, catering to keen gardeners or those looking to grow their own produce.

Well-balanced in size, comfort, and functionality, this attractive dormer bungalow offers a rare opportunity to acquire a well-loved home with generous outdoor space and a host of appealing features. Early viewing is highly recommended.





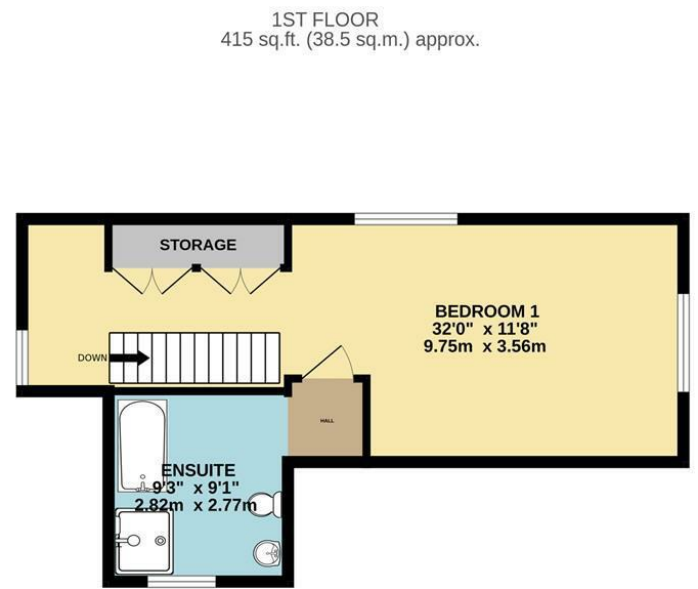
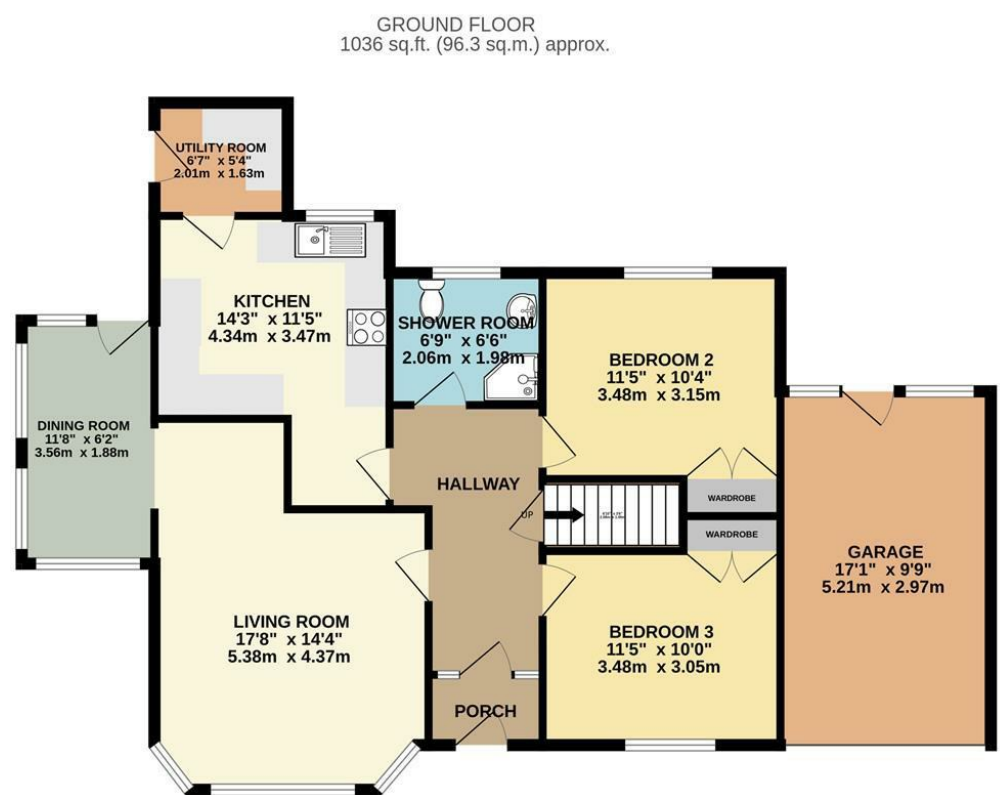












TOTAL FLOOR AREA : 1451 sq.ft. (134.8 sq.m.) approx.
Not to scale-for identification purposes only
Made with Metropix ©2025



DOUGLAS
37 VICTORIA STREET
DOUGLAS
ISLE OF MAN IM1 2LF
T 01624 620606
F 01624 677363
E info@deanwood.co.im

CASTLETOWN
COMPTON HOUSE
9 CASTLE STREET CASTLETOWN
ISLE OF MAN IM9 1LF
T 01624 825995
F 01624 825996
E castletown@deanwood.co.im

RAMSEY
LEZAYRE HOUSE
87 PARLIAMENT STREET
RAMSEY ISLE OF MAN IM8 1AQ
T 01624 816111
F 01624 816588
E ramsey@deanwood.co.im

These particulars are for information purposes only. They do not constitute or form any contract nor should any statement contained herein be relied upon as a representation of fact. Neither the vendor nor DeanWood Agencies Limited ('the firm'), nor any officer or employee of the firm accept liability or responsibility for any statement contained herein. The vendor does not by these particulars, nor does the firm, nor does any officer or any employee of the firm have any authority to make or give any representation or warranty whatsoever as regards the property or otherwise. It is the sole responsibility of any person interested in the property described in these particulars to make all proper enquiries and searches to verify the description of the property and all other particulars herein.

FOR MORE PROPERTIES VISIT OUR WEBSITE @ **deanwood.im**