



**Price**

**£600 PCM**

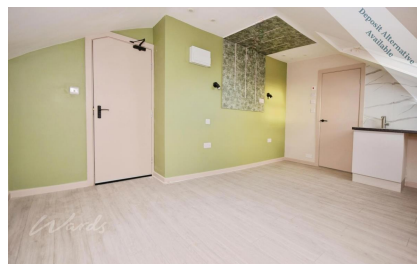
Fees Apply



Available 07/03/26

**Maison Dieu  
Road Dover CT16**

*Wards*  
Helping you move forwards



## Main Features

Room with en-suite shower

Top floor

Communal kitchen

Open house event

Video tour available

Alternative deposit option available



**Deposit required is £692.31**  
**Dover District - Council Tax Band Tax Band A**

Renting a property is a big commitment and we recommend that you visit the local authority website and these websites which offer helpful information and advice about letting

[www.gov.uk/government/publications/how-to-rent](http://www.gov.uk/government/publications/how-to-rent)

[www.gov.uk/private-renting](http://www.gov.uk/private-renting)

[www.wardsofkent.co.uk/letting/our-tenancy-fees/](http://www.wardsofkent.co.uk/letting/our-tenancy-fees/)

[www.gov.uk/green-deal-energy-saving-measures](http://www.gov.uk/green-deal-energy-saving-measures)

**Call Dover 01304 201109 ■ [wardsofkent.co.uk](http://wardsofkent.co.uk)**

IMPORTANT INFORMATION: Please note that administration fees are charged in addition to the rent and security deposit. Please contact our Lettings Team who will confirm the total costs involved in renting this property. For clarification, we wish to inform the prospective tenant that we have prepared these details as a general guide. The agent has not carried out a detailed survey nor tested the services, appliances, or specific fittings (unless otherwise stated), and no warranty can be given as to their condition. All room measurements are taken at floor level. We strongly recommend that all the information which we provide about the property is verified by yourself and your advisers. The contents of this publication are © Wards, 2015. Wards is a trading name of Arun Estates Limited Registered in England No. 2597969

## Accommodation

**COMMUNAL KITCHEN: 4.84m x 2.17m 15'10" x 7'1"**

**ROOM 18: 3.61m x 4.75m 11'10" x 15'7"**



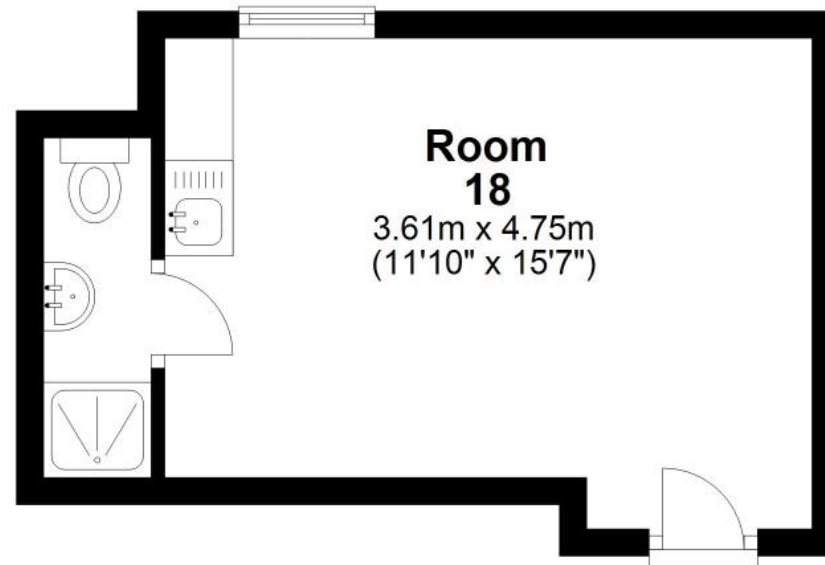
### Third Floor

Approx. 9.1 sq. metres (97.6 sq. feet)



### Fourth Floor

Approx. 18.2 sq. metres (196.0 sq. feet)



Total area: approx. 27.3 sq. metres (293.6 sq. feet)