

# Honey Lane

Maidenhead • • SL6 6RH

Guide Price: £650,000



coopers  
est 1986



# Honey Lane

Maidenhead • • SL6 6RH

Extended semi-detached family home, ideally positioned in a rural yet well-connected location.

Desirable Rural Location

Extended Home

Open-Plan Kitchen/Diner

Convenient Utility Room

Gated Driveway Parking

Spacious Lounge

Well-Maintained Throughout

Separate Garage

Front & Rear Garden

Secluded & Private Plot

These particulars are intended as a guide and must not be relied upon as statements of fact. Your attention is drawn to the Important Notice on the last page.







The spacious ground floor features a welcoming hallway that opens into a generous living room. To the rear, a sleek open-plan kitchen and dining area extends over 18ft, accompanied by a practical utility room and a downstairs WC. Upstairs, there are three well-proportioned bedrooms, with the master and second bedroom benefiting from built-in storage. A modern family bathroom completes the first floor.

Externally, the home offers a neatly maintained private rear garden and garage. At the front, you'll find off-street parking, a lawned garden bordered by mature hedging, and a gated entrance.

Located in a desirable residential area, the property enjoys a peaceful setting with convenient access to transport links, well-regarded schools, and local amenities. Whether commuting or enjoying the nearby countryside, this home serves as the perfect base.





### Schools:

Burchetts Green CofE Infants' School 1.0 miles  
Knowl Hill Church of England Primary Academy 1.5 miles  
Danesfield School 1.9 miles



### Train:

Shiplake Station 3.4 miles  
Marlow Station 3.4 miles  
Wargrave Station 3.6 miles



### Car:

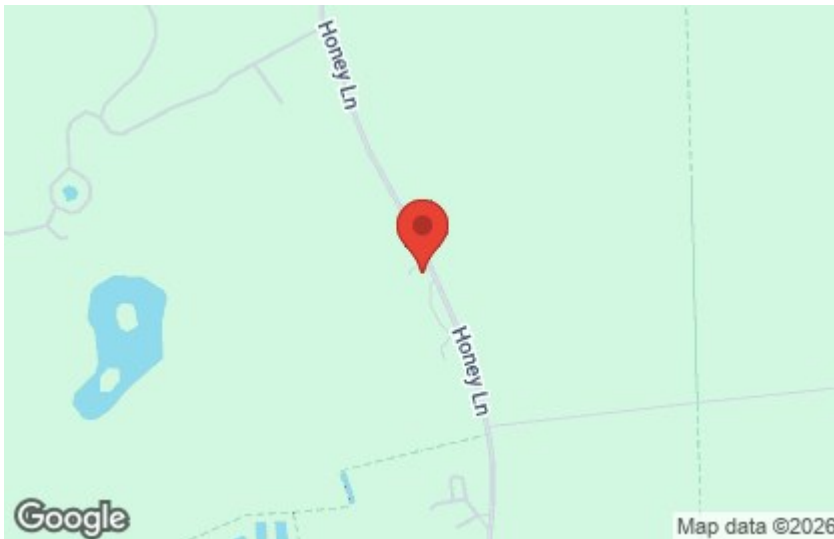
M4, A40, M25, M40



### Council Tax Band:

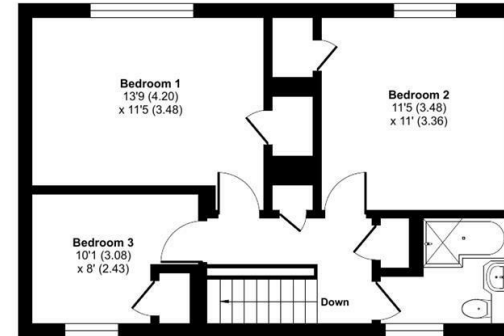
E

(Distances are straight line measurements from centre of postcode)

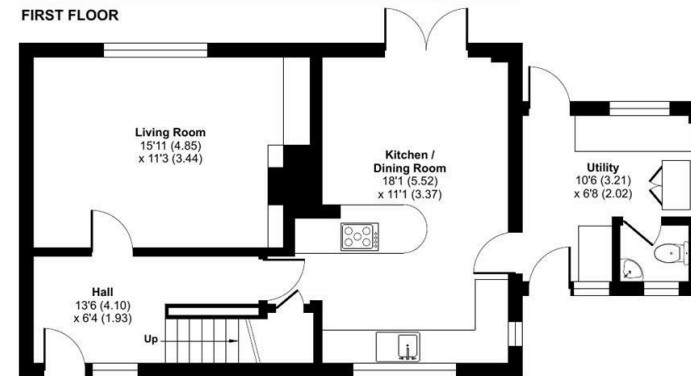


## Honey Lane, Hurley, Maidenhead, SL6

Approximate Area = 1128 sq ft / 104.7 sq m  
For identification only - Not to scale



FIRST FLOOR



GROUND FLOOR

Floor plan produced in accordance with RICS Property Measurement 2nd Edition, incorporating International Property Measurement Standards (IPMS2 Residential). © nichecom 2025. Produced for Coopers. REF: 1304555

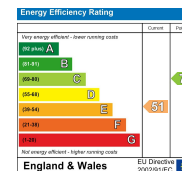
coopers est 1986

01628 232 550

42 Queen Street, Maidenhead,  
, SL6 1HZ

maidenhead@coopersresidential.co.uk

CoopersResidential.co.uk



Important Notice: These particulars, whilst believed to be accurate are set out as a general outline only for guidance and do not constitute any part of an offer or contract. Intending purchasers should not rely on them as statements or representation of fact, but must satisfy themselves by inspection or otherwise has the authority to make or give any representation or warranty in respect of the property.

coopers est 1986