



**1 Furzeland, Filham Chase  
Ivybridge  
Devon  
PL21 0XD**

**Guide Price £369,950**

  
MILLINGTON TUNNICLIFF

# 1 Furzeland Filham Chase Ivybridge Devon PL21 0XD



3

2

1



D

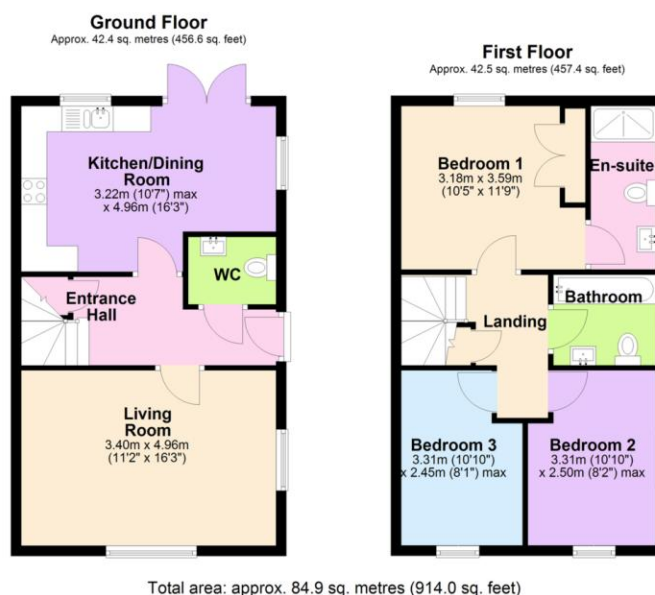


B 83



914.0  
SQFT

## FLOORPLAN



## Guide Price £369,950

### SUMMARY

A Bloor built 3 bedroom detached house, set on this extremely popular newly built estate on the eastern side of Ivybridge, convenient to local amenities. The house offers an entrance hall, cloakroom, living room and modern kitchen/diner on the ground floor, together with landing, the 3 bedrooms, family bathroom and en suite shower/WC on the upper floor. There is a westerly facing rear garden and long private driveway at side. the house is Upvc double glazed and gas centrally heated. EPC B 83.

Bloor Built 3 Bedroom Detached House | En Suite Shower/WC | Spacious Living Room | Modern Kitchen/Diner | Upvc Double Glazing | Gas Central Heating | Westerly Facing Rear Garden | Long Private Driveway | Popular Modern Estate On The Eastern Side Of Ivybridge | EPC B 83

### CONTACT

19 Fore Street

Ivybridge

Devon

PL21 9AB

### EMAIL

info@millingtontunncliff.co.uk

### TEL

01752 896020

www.millingtontunncliff.co.uk