



House - Semi-Detached

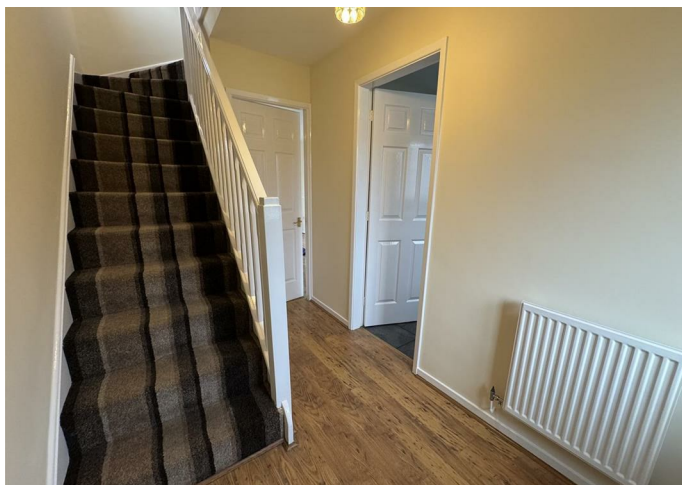
37 MUNCASTER CLOSE,
BROUGHTON ASTLEY,
LEICESTERSHIRE, LE9
6HL

PCM

£950 PCM

FEATURES

- Lutterworth
- Unfurnished
- Sorry, no smokers
- Small garden
- Semi-Detached
- Gas central heating
- Sorry No Pets
- Driveway parking



HOWKINS &
HARRISON

2 Bedroom House - Semi-Detached located in Broughton Astley

An immaculate modern semi-detached house in a cul-de-sac position which briefly comprises: Hall, lounge, kitchen, 2 bedrooms and bathroom. Outside are front and rear gardens, off road parking for 2 cars, Upvc double glazing and radiator heating. UNFURNISHED.

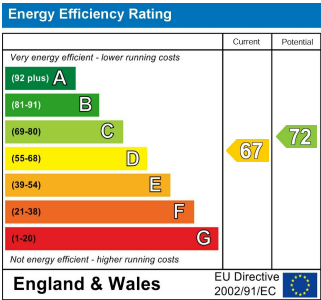
To view our Applicant & Tenant Fees, visit: howkinsandharrison.co.uk/applicant-and-tenant-fees

Call us on

www.howkinsandharrison.co.uk

Council Tax Band

B



Agents Note: Whilst every care has been taken to prepare these particulars, they are for guidance purposes only. All measurements are approximate and are for general guidance purposes only and whilst every care has been taken to ensure their accuracy, they should not be relied upon and potential buyers are advised to recheck the measurements.

HOWKINS &
HARRISON