



Gateshead NE11 0YJ

Offers In Excess Of £400,000





This footer paragraph is an example only and should not be relied upon as complying with current legislation. These particulars, whilst believed to be accurate are set out as a general outline only for guidance and do not constitute any part of an offer or contract. Intending purchasers should not rely on them as statements of representation of fact, but must satisfy themselves by inspection or otherwise as to their accuracy. No person in this firm's employment has the authority to make or give any representation or warranty in respect of the property.

Gateshead NE11 0YJ



This three bedroom detached bungalow offers a vast amount of living space and is ideally located in the rural village of Kibblesworth. Close to local transport links the property boasts outstanding views across fields and green landscapes.

The property has a vast amount of living space that will benefit a number of buyers. Briefly comprising an entrance hallway leading to the first bedroom, downstairs bathroom with toilet, basin and shower and then further into the living room. A sun room at the back of the property looks onto the garden, whilst this also leads into the kitchen complete with pantry.

To the first floor there are two large double bedrooms and a second family bathroom including low level toilet, wash basin and walk in shower.

Externally, the property has gardens to both the front and rear and a single garage with up and over door.

Freehold
EPC rating to be confirmed

ENTRANCE HALL

LIVING ROOM

17'4" x 13'7" (5.29 x 4.15)

LIVING ROOM

15'3" x 13'2" (4.65 x 4.02)

KITCHEN

13'11" x 13'3" (4.26 x 4.06)

BEDROOM

15'1" x 14'0" (4.60 x 4.27)

BATHROOM

FIRST FLOOR

BEDROOM

18'6" x 14'2" (5.65 x 4.32)

BEDROOM

18'6" x 13'5" (5.66 x 4.09)

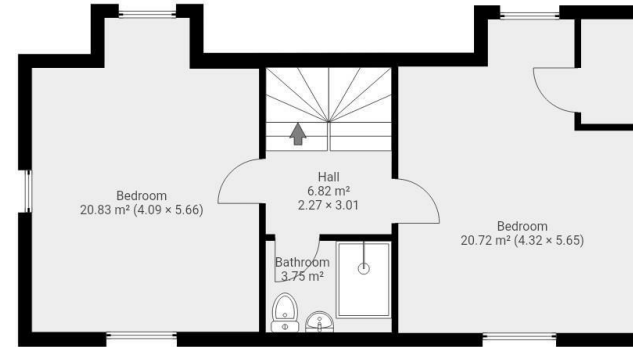
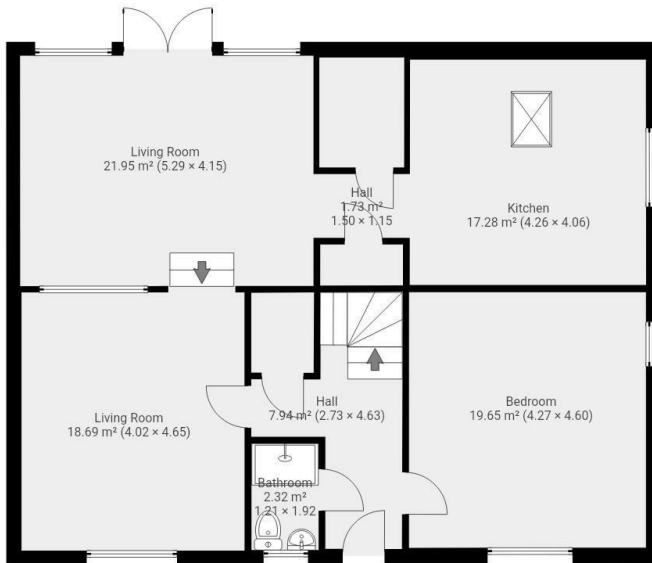
BATHROOM

OUTSIDE

GARAGE

DISCLAIMER

Please be advised that these for sale details and images have been supplied to us via a third party. We therefore cannot verify their accuracy and would recommend that you arrange to visit and take a look for yourself.



THIS FLOORPLAN IS PROVIDED WITHOUT WARRANTY OF ANY KIND. SEVEN KEYS DISCLAIMS ANY WARRANTY INCLUDING, WITHOUT LIMITATION, SATISFACTORY QUALITY OR ACCURACY OF DIMENSIONS.



Property Information

0191 372 9898

Suite 6, 15 North Bums, Chester-le-Street, County Durham, DH3 3TF
sales.cls@venturepropertiesuk.com